



Brookside, Witton Gilbert, DH7

4 Bedrooms, 2 Bathrooms

Nestled in the charming and sought-after village of Witton Gilbert, this exquisite 4-bedroom property offers everything a family could desire—modern, spacious, and move-in ready. Located in a peaceful community, this home is perfect for anyone looking for a blend of space, comfort, and practicality. Close to a highly regarded primary schools, a convenience store and popular village pubs, this really is a perfect spot for a growing family and must be seen to be truly appreciated.

Further Details

- Large Enclosed Garden
- Double Garage
- Recently Installed Bathroom
- Large Living Area
- Double Kitchen/Utility
- Four Bedrooms

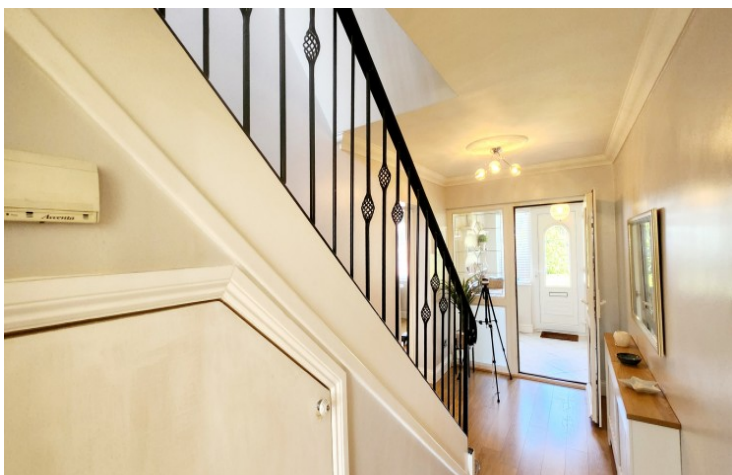
Nested, London

24 Greville Street, London, EC1N 8SS

E: elliott@nested.com - T: 020 3858 0695

[View property online](#)

More photos



Nested, London

24 Greville Street, London, EC1N 8SS

E: elliott@nested.com - T: 020 3858 0695

[View property online](#)

More photos



Nested, London

24 Greville Street, London, EC1N 8SS

E: elliott@nested.com - T: 020 3858 0695

[View property online](#)

More photos



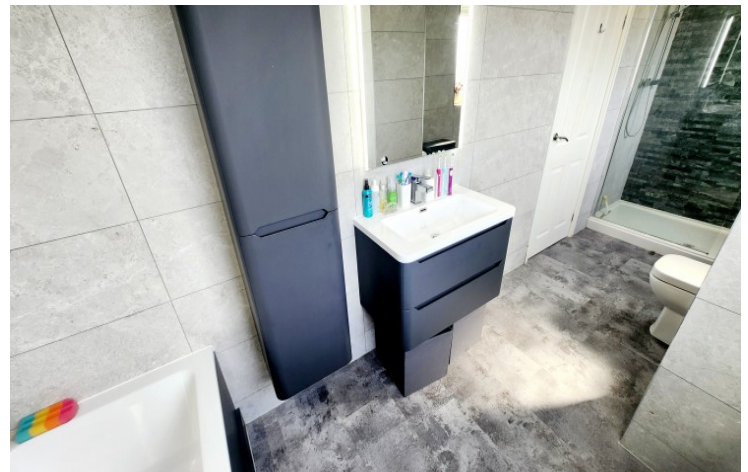
Nested, London

24 Greville Street, London, EC1N 8SS

E: elliott@nested.com - T: 020 3858 0695

[View property online](#)

More photos



Nested, London

24 Greville Street, London, EC1N 8SS

E: elliott@nested.com - T: 020 3858 0695

[View property online](#)

More photos



Nested, London

24 Greville Street, London, EC1N 8SS

E: elliott@nested.com - T: 020 3858 0695

[View property online](#)