



183 Redcliffe Street, Swindon

Swindon

£220,000



# 183 Redcliffe Street

Rodbourne, Swindon

Spacious Victorian terraced property in the popular Rodbourne location with two reception rooms, kitchen, bathroom, two double bedrooms and an additional room ideal as a home office together with a rear garden and a garage. No onward chain.

Council Tax band: B

Tenure: Freehold

EPC Energy Efficiency Rating: D

EPC Environmental Impact Rating:





## 183 Redcliffe Street

Rodbourne, Swindon

McFarlane Sales & Lettings are delighted to offer this spacious mid-terrace house located in the popular area of Rodbourne and just a short walk from local shops, schools and other amenities. The property briefly comprises of entrance hall, spacious living room, separate dining room, modern fitted kitchen, a modern ground floor family bathroom, one double bedroom with an additional room ideal as an home office/nursery and a second double bedroom. Further benefits of the property include gas central heating, enclosed rear garden, a garage to the rear and on road parking may be available. Council Tax Band: B EPC Rating: D





# 183 Redcliffe Street

Rodbourne, Swindon

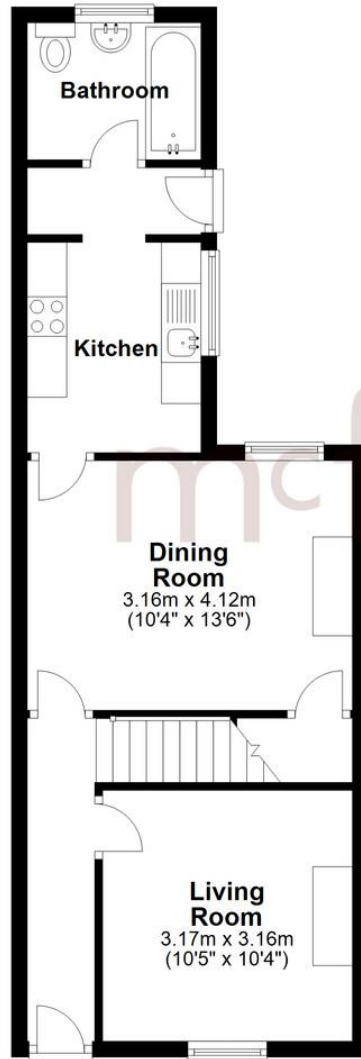
- VICTORIAN TERRACE
- NO ONWARD CHAIN
- TWO RECEPTIONS ROOMS
- GARAGE
- TWO DOUBLE BEDROOMS
- OFFICE/ NURSERY
- CLOSE TO LOCAL AMENITIES
- ENCLOSED REAR GARDEN





### Ground Floor

Approx. 42.4 sq. metres (456.2 sq. feet)



### First Floor

Approx. 36.3 sq. metres (390.5 sq. feet)



Total area: approx. 78.7 sq. metres (846.6 sq. feet)

## McFarlane Sales & Lettings

McFarlane Sales & Letting Ltd, 28-30 Wood Street - SN1 4AB

01793 296880 • oldtown@mcfarlaneproperty.com • www.mcfarlaneproperty.com/

mcfarlane  
property.com