



Woodgate House Bath Road, Marlborough

Fixed Price £1,150,000

mcfarlane
property.com



Woodgate House Bath Road

Marlborough, Marlborough

Discover the unparalleled charm of Woodgate House, a luxurious residence built in 1995, showcasing a striking redbrick and wooden clad design that sets it apart. Perfectly situated near Marlborough's vibrant amenities, this exquisitely designed home offers breath-taking rural views while effortlessly blending timeless elegance with modern comforts. A highlight of this property is 'The Loft,' a separate first floor self contained annex, currently generating additional income as a rental or serving as an ideal guest retreat.

At the heart of the home lies a bespoke kitchen, adorned with quartz worktops and a stunning oak-topped island, serving as both a focal point and a versatile workspace, top-of-the-line appliances, and a sunlit, south-facing garden/sun room that opens seamlessly to the rear garden through bi-fold doors, providing indoor-outdoor living experience. The ground floor impresses with a grand entrance hallway, a cosy sitting room with a wood burner and French doors leading to the rear garden, a stylish dining room again with French doors leading to a patio, two versatile studies, and a convenient cloakroom.

Throughout the home, you'll find stunning oak wooden flooring, with the added luxury of underfloor heating in the kitchen, sun room, and utility. A practical tiled utility room offers ample storage solutions, a sink, and a water softener unit. The solar panel operation is located here, with access leading to the garage and workshop



OUTSIDE

At the front, you'll find a spacious paved area that can hold up to six vehicles, leading to a large garage with a side passage to the rear garden. The south-facing back garden features a patio, perfect for enjoying the lovely garden, and includes a practical potting shed. There is a large, flat lawn with mature flower beds, well-stocked with a variety of beautiful flowers and shrubs. The garden also has apple and pear trees, along with other mature trees. Additionally, there's a kitchen garden with vegetable beds growing beetroots, parsnips, raspberries, and onions.

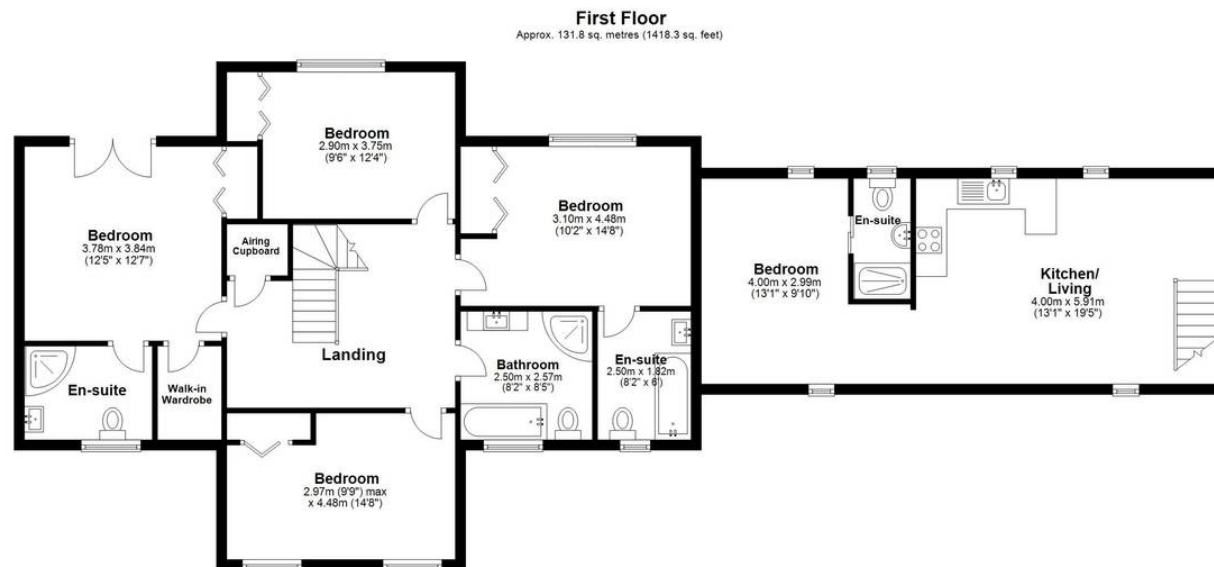
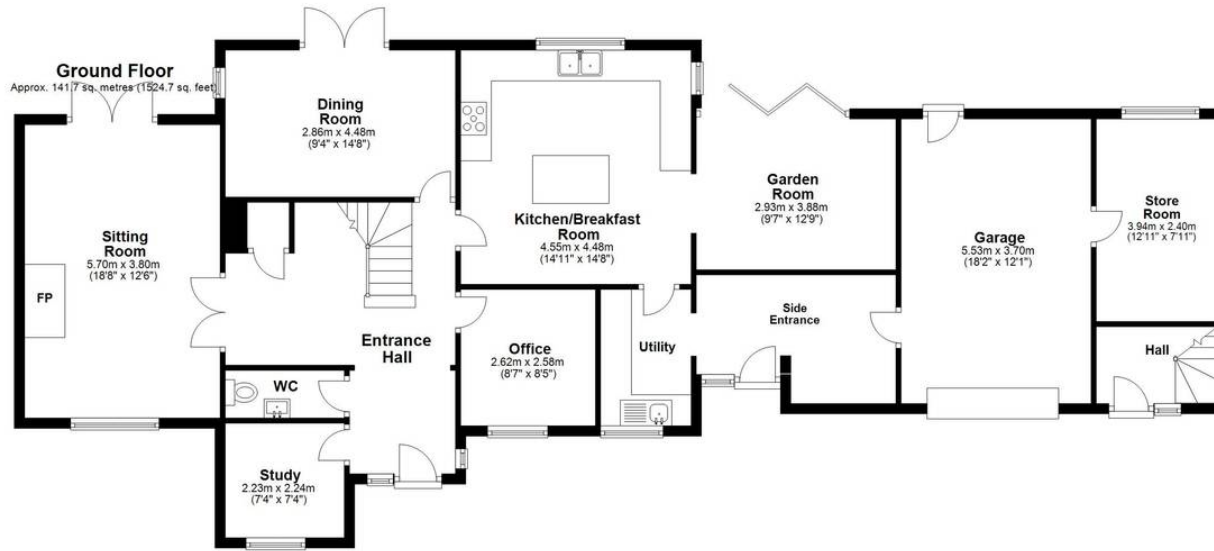
UTILITIES AND MATERIAL DETAILS

All main services are connected. The property also features 15 solar panels with bird protection netting, which feeds into 5kW batteries. Once charged, excess energy from the UV panels is exported to the grid. Woodgate House boasts modern high-efficiency double glazing throughout, reliable fibre broadband, and an electric car charging point.

THE LOFT

In addition to the main house, the property features a self-contained annex located above the garage. This versatile space is perfect for visitors, offering a spacious double bedroom and a well-appointed bathroom. The annex provides highly useful additional accommodation and could also serve as an excellent home office or a potential source of extra income if rented out.





Total area: approx. 273.4 sq. metres (2943.0 sq. feet)

McFarlane Sales & Lettings

McFarlane Sales & Letting, 106 High Street - SN8 1LT

01672
514380

• marlborough@mcfarlaneproperty.com • www.mcfarlaneproperty.com/

mcfarlane
property.com