



**21 Kipling Court Kipling Drive, Blackpool**

Blackpool

Offers Over **£70,000**

# 21 Kipling Court Kipling Drive

## Blackpool

This first floor apartment offers a fantastic opportunity for those looking to downsize or as an investment opportunity. The property comprises a well-proportioned double bedroom, a bright and spacious lounge, a fitted kitchen complete with integrated electric oven and 5 ring gas hob, a utility/storage room, and a three-piece suite bathroom. Additionally, residents will benefit from access to well-maintained communal gardens, providing a peaceful outdoor space to relax and unwind. Parking is made easy with resident and visitor parking facilities, ensuring convenience for all. With the added advantage of no onward chain, this property presents an ideal investment or first-time purchase opportunity.

Council Tax band: A

Tenure: Leasehold

- First Floor Apartment
- Communal Gardens, Allocated Resident And Visitor Parking
- Hallway, Lounge, Kitchen With Integrated Electric Oven And 5 Ring Gas Hob, Bedroom, Utility/Storage Room, 3 Piece Suite Bathroom
- Investment Opportunity Or Perfect For Downsizing
- No Onward Chain





**Hallway**

11' 11" x 3' 3" (3.64m x 1.00m)

**Lounge**

16' 2" x 10' 10" (4.93m x 3.29m)

**Kitchen**

7' 1" x 8' 11" (2.15m x 2.73m)

**Bedroom**

11' 4" x 10' 7" (3.46m x 3.22m)

**Utility/Storage Room**

4' 6" x 6' 0" (1.37m x 1.82m)

**Bathroom**

6' 10" x 6' 8" (2.09m x 2.04m)





Stephen Te  
ESTATE AGENTS

**Hallway**

11' 11" x 3' 3" (3.64m x 1.00m)

**Lounge**

16' 2" x 10' 10" (4.93m x 3.29m)

**Kitchen**

7' 1" x 8' 11" (2.15m x 2.73m)

**Bedroom**

11' 4" x 10' 7" (3.46m x 3.22m)

**Utility/Storage Room**

4' 6" x 6' 0" (1.37m x 1.82m)

**Bathroom**

6' 10" x 6' 8" (2.09m x 2.04m)

**Communal Gardens**

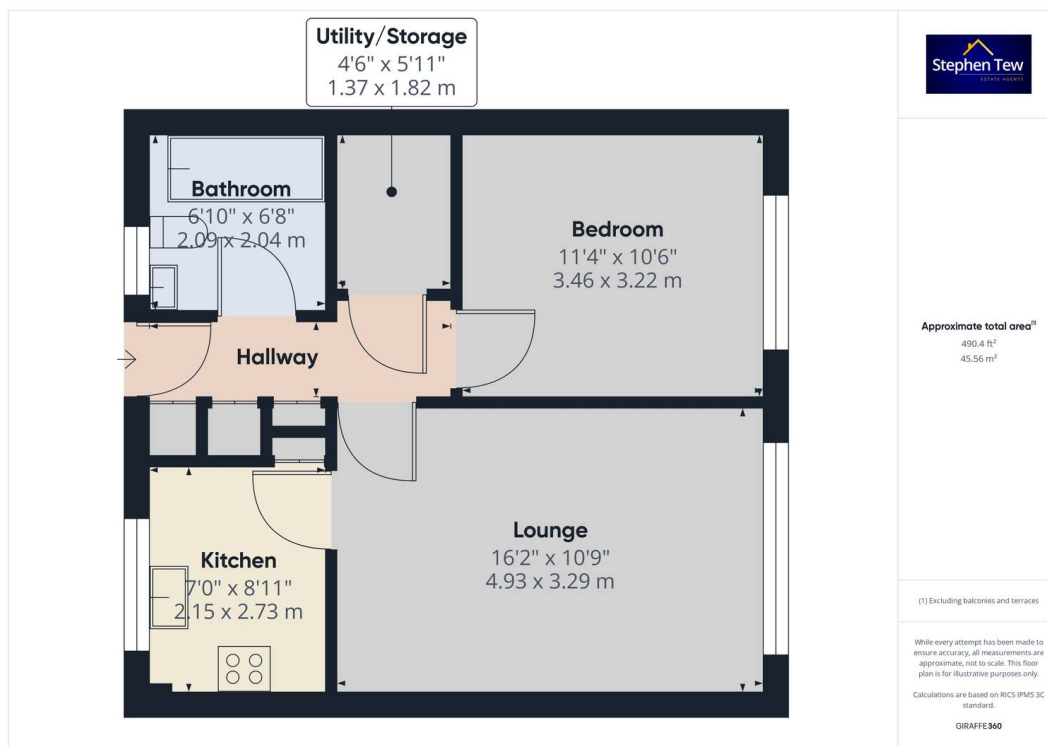
**Allocated Parking For Residents And Visitors**



Stephen Te  
ESTATE AGENTS



Stephen Te  
ESTATE AGENTS





## Stephen Tew Estate Agents

Stephen Tew Estate Agents, 132 Highfield Road - FY4 2HH

01253 401111

[info@stephentew.co.uk](mailto:info@stephentew.co.uk)

[www.stephentew.co.uk](http://www.stephentew.co.uk)

