



£120,000-£125,000

Guide Price

LARKSPUR AVENUE
REDHILL



- GROUND-FLOOR MAISONETTE
- TWO BEDROOMS
- LIVING ROOM
- MODERN KITCHEN
- GARAGE IN SEPARATE BLOCK
- GARDEN
- EPC E



Two-Bedroom Ground-Floor Maisonette with No Upward Chain

THIS TWO-BEDROOM GROUND-FLOOR MAISONETTE, OFFERED WITH NO UPWARD CHAIN, PRESENTS AN EXCELLENT OPPORTUNITY FOR FIRST-TIME BUYERS OR INVESTORS READY TO INVEST IN SOME THOUGHTFUL UPDATES.

ENTERING INTO THE HALLWAY, YOU HAVE ACCESS TO THE SPACIOUS LIVING ROOM WHICH HAS A BLANK CANVAS AWAITING NEW FLOORING AND PERSONAL TOUCHES, ALSO FEATURES A MODERN WALL-MOUNTED FIREPLACE. THE BRIGHT, WELL-MAINTAINED KITCHEN FEATURES WHITE CABINETRY AND A SLEEK BLACK COUNTERTOP, WITH DIRECT ACCESS TO THE GARDEN AN IDEAL SPACE FOR ENTERTAINING OR RELAXING.

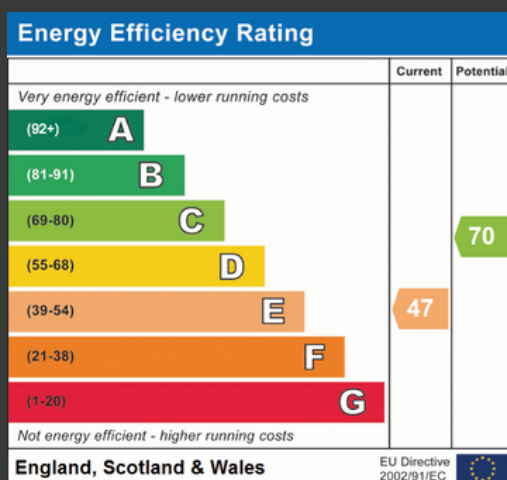
FROM THE INNER HALLWAY, THERE IS ACCESS TO THE TWO BEDROOMS AND THE BATHROOM. BOTH BEDROOMS ARE GENEROUSLY PROPORTIONED, SECOND BEDROOM OFFERING STORAGE. THE BATHROOM OFFERS PLENTY OF SCOPE FOR MODERNIZATION.

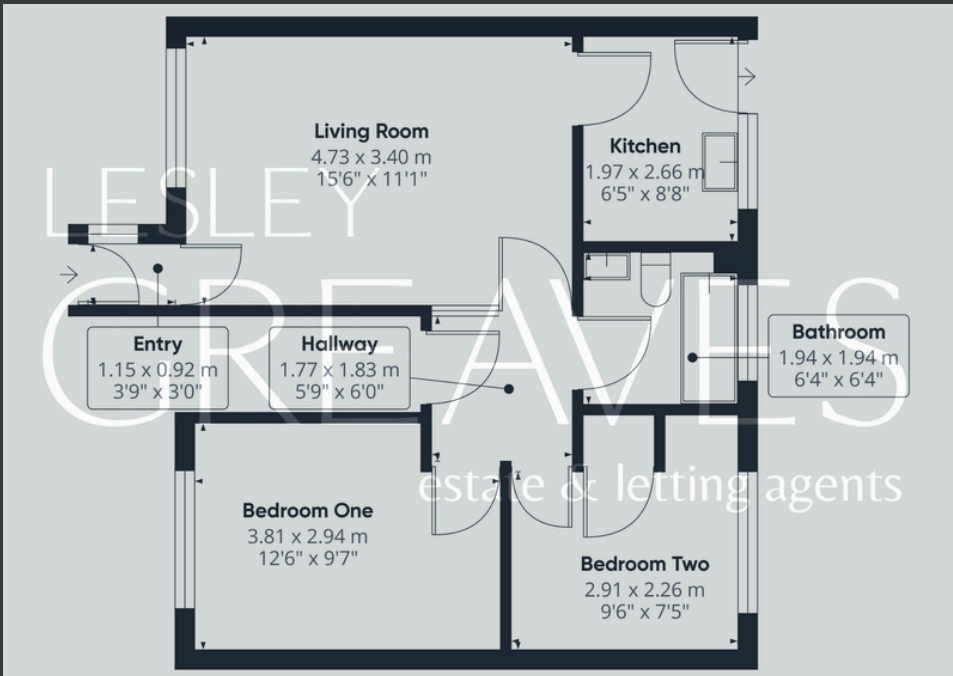
THE PROPERTY ALSO BENEFITS FROM A GARAGE IN A SEPARATE BLOCK, PERFECT FOR STORAGE OR PARKING. CONVENIENTLY LOCATED NEAR LOCAL AMENITIES AND TRANSPORT LINKS, THIS MAISONETTE OFFERS GREAT POTENTIAL FOR REFURBISHMENT, ALLOWING YOU TO CREATE A BEAUTIFUL HOME.

THE LEASE RUNS FOR 99 YEARS FROM 1ST JULY 1978.

THERE IS A YEARLY GROUND RENT CHARGE OF £15.00, PURCHASERS ARE TO ENSURE THIS INFORMATION IS CORRECT AND UP TO DATE PRIOR TO BUYING THE PROPERTY

- FREEHOLD
- COUNCIL TAX; BAND A
- LOCAL AUTHORITY; GEDLING BOROUGH COUNCIL
- MEASUREMENTS; 52 SQM





Lesley Greaves Estate & Lettings Agents

20 Main Road ,Gedling, Nottingham, NG4 3HG

0115 987 7337

sales@lesleygreaves.co.uk