

# Cathedral View

Full Street, Derby, DE1 3AF

John   
German



# Cathedral View

Full Street, Derby, DE1 3AF

£80,000

**Stylish light and spacious apartment located in the heart of the city offered for sale with no onward chain. The accommodation would ideally suit a first time buyer or buy to let investor. Gated and well managed apartment block with secure parking.**

The property is ideally located in the City Centre within walking distance of a range of independent shops, bars and restaurants in the Cathedral Quarter, a cycle path to the rear of the apartment leads to Pride Park and the picturesque Darley Park and the location offers excellent road links with the A52 and A38. An early internal viewing comes highly advised.

Entrance to the apartments is via a secure gated entrance with an intercom system. Entrance to the communal areas are again via a secure entry door with lift access to all floors.

Step inside the apartment into a spacious entrance hall with built-in storage, intercom system and doors leading off to the accommodation.

The lounge has a floor length window overlooking the courtyard with a Juliette balcony, gas central heating radiator and open access to the kitchen.

The modern fitted kitchen has wall and base units, work surfaces incorporating a sink and drainer, integrated oven and hob plus an integrated fridge and freezer.

The bedroom has a floor length window with views over the courtyard, gas central heating radiator and fitted wardrobe.

The bathroom is fitted with a three piece suite comprising panelled bath with shower over, low level WC and wash hand basin plus a gas central heating radiator.

Outside can be found secure allocated off road car parking access via secure electric gates.

**Tenure:** Leasehold (purchasers are advised to satisfy themselves as to the tenure via their legal representative). Lease commenced 1 December 2015 for 150 years. Ground rent is currently £250 paid 2<sup>nd</sup> January every year. Service charge is £4020 per annum (paid monthly over 12 payments). Please note additional fees could be incurred for items such as leasehold packs. The property cannot be used for Air BnB accommodation. Freeholders are Wilson Bowden Development Ltd.

**Please note:** It is quite common for some properties to have a Ring doorbell and internal recording devices.

**Property construction:** Standard

**Parking:** Allocated

**Electricity supply:** Mains

**Water supply:** Mains

**Sewerage:** Mains

**Heating:** Gas

(Purchasers are advised to satisfy themselves as to their suitability).

**Broadband type:**

See Ofcom link for speed: <https://checker.ofcom.org.uk/>

**Mobile signal/coverage:** See Ofcom link <https://checker.ofcom.org.uk/>

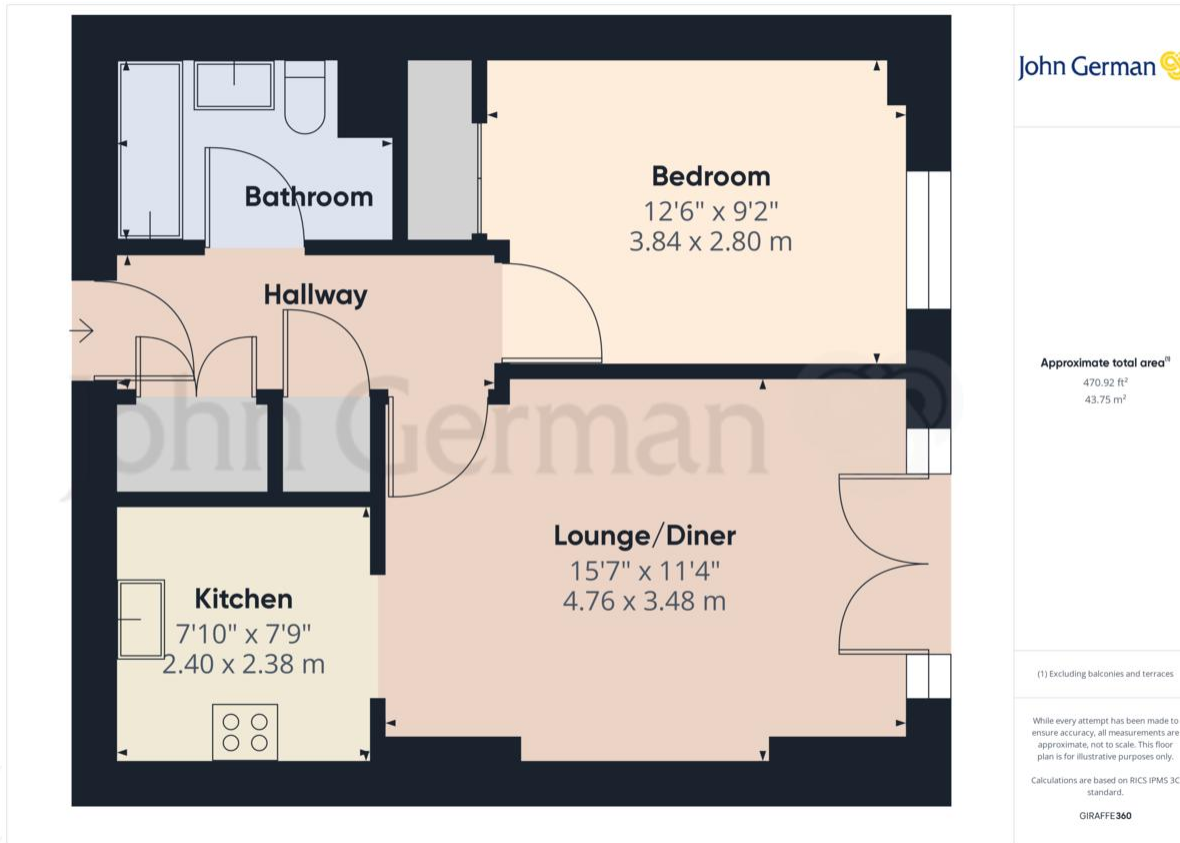
**Local Authority/Tax Band:** Derby City Council / Tax Band A

**Useful Websites:** [www.gov.uk/government/organisations/environment-agency](http://www.gov.uk/government/organisations/environment-agency)

**Our Ref:** JGA/20092024







The property information provided by John German Estate Agents Ltd is based on enquiries made of the vendor and from information available in the public domain. If there is any point on which you require further clarification, please contact the office and we will be pleased to check the information for you, particularly if contemplating travelling some distance to view the property. Please note if your enquiry is of a legal or structural nature, we advise you to seek advice from a qualified professional in their relevant field.

### Agents' Notes

These particulars do not constitute an offer or a contract neither do they form part of an offer or contract. The vendor does not make or give and Messrs. John German nor any person employed has any authority to make or give any representation or warranty, written or oral, in relation to this property. Whilst we endeavour to make our sales details accurate and reliable, if there is any point which is of particular importance to you, please contact the office and we will be pleased to check the information for you, particularly if contemplating travelling some distance to view the property. None of the services or appliances to the property have been tested and any prospective purchasers should satisfy themselves as to their adequacy prior to committing themselves to purchase.

### Referral Fees

**Mortgage Services** - We routinely refer all clients to APR Money Limited. It is your decision whether you choose to deal with APR Money Limited. In making that decision, you should know that we receive on average £60 per referral from APR Money Limited.

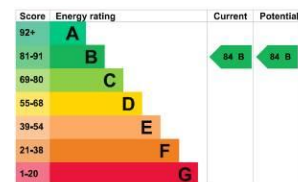
**Conveyancing Services** - If we refer clients to recommended conveyancers, it is your decision whether

### John German

Suite 3, The Mill, Lodge Lane, Derby,  
Derbyshire, DE1 3HB

01332 943818

derby@johngerman.co.uk



Ashbourne | Ashby de la Zouch | Barton under Needwood  
Burton upon Trent | Derby | East Leake | Lichfield  
Loughborough | Stafford | Uttoxeter

JohnGerman.co.uk Sales and Lettings Agent

