

8 Medway Court, Aylesford

Guide Price £270,000

eden
estates

8 Medway Court

Aylesford, Aylesford

GUIDE PRICE £270,000 - £300,000 - Stunning 2-bed apartment with river views, en-suite bathroom, and spacious lounge/diner. Conveniently located with allocated parking. Ideal luxury living in sought-after area.

Council Tax band: D

Tenure: Leasehold

- Two double bedrooms
- En-suite
- River views
- Large apartment 835 sq ft
- Well located for all local amenities
- Allocated parking
- 20.4ft Lounge/Diner



eden
estates

Kitchen

11' 2" x 7' 11" (3.40m x 2.41m)

Lounge / Diner

13' 8" x 20' 4" (4.16m x 6.20m)

Bedroom

14' 6" x 7' 7" (4.41m x 2.31m)

Bedroom

12' 2" x 17' 0" (3.71m x 5.19m)

Bathroom

En suite



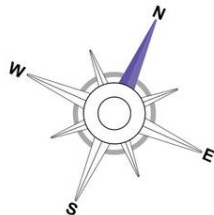
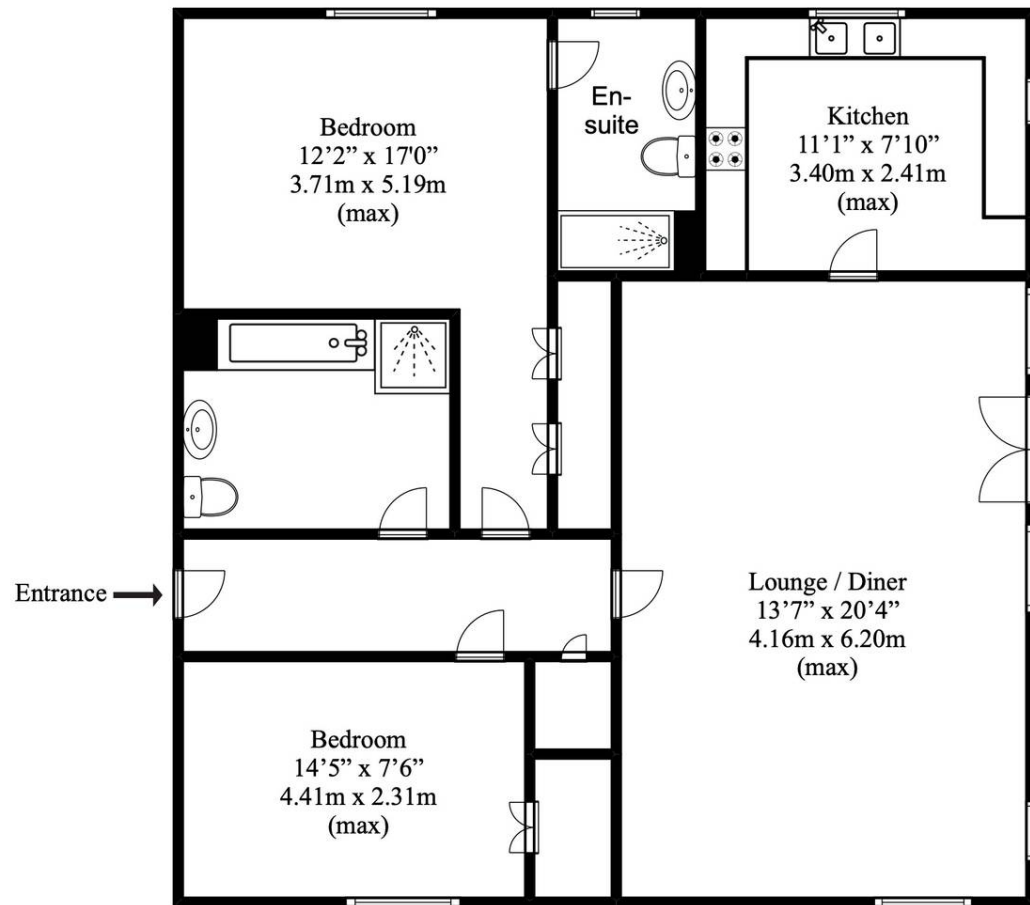


BALCONY

ALLOCATED PARKING

2 Parking Spaces





Approx. total
floor area
835 SQ.FT.
77.61 SQ.M.

Disclaimer

This floorplan is for illustrative purposes only. We do not accept responsibility for any errors or omissions. The depicted appliances have not been tested, and their operability or efficiency is not guaranteed. Measurements are approximate and not to scale and not precise, and may have been taken from the widest area including wardrobes and storage spaces. Garages and outbuildings may not be represented in their actual location in relation to the property. Byers are advised to take their own measurements and compass reading. Internal measurements and total areas should be verified, as their accuracy is not guaranteed.



Eden Estates

781-783 London Road, Larkfield - ME20 6DE

01732 795162

hey@eden-estates.co.uk

www.eden-estates.co.uk



eden
estates