



Meade Court, Walton On The Hill

Tadworth

Guide Price **£399,950**



Meade Court

Walton On The Hill, Tadworth

Charming split-level maisonette in gated development, built in 1993 with character and charm. Features cosy living room, two bedrooms, two bathrooms, private garden, carport.

Delightful village location - must be viewed!

Council Tax band: E

Tenure: Leasehold

EPC Energy Efficiency Rating: C

EPC Environmental Impact Rating: C

- 'Cottage' Style Split Level Maisonette
- Modern Gated Development
- Built By Berkeley Homes in 1993
- Delightful Village Location
- Living Room
- Cloakroom
- Two Bathrooms
- Private Part Walled Garden
- Covered Car Port
- Visitor Parking



Nestled in a delightful village location, this charming 'cottage' style split-level maisonette is a gem in a modern gated development. Built by Berkeley Homes in 1993, this property exudes character and charm. The living room offers a cosy atmosphere, perfect for relaxation or entertaining guests. The kitchen features modern amenities and ample storage space, making meal preparation a joy. The property also boasts a convenient cloakroom for guests' use. Upstairs, two bright and spacious bedrooms provide comfortable retreats, the master bedroom benefitting from an en-suite shower room.

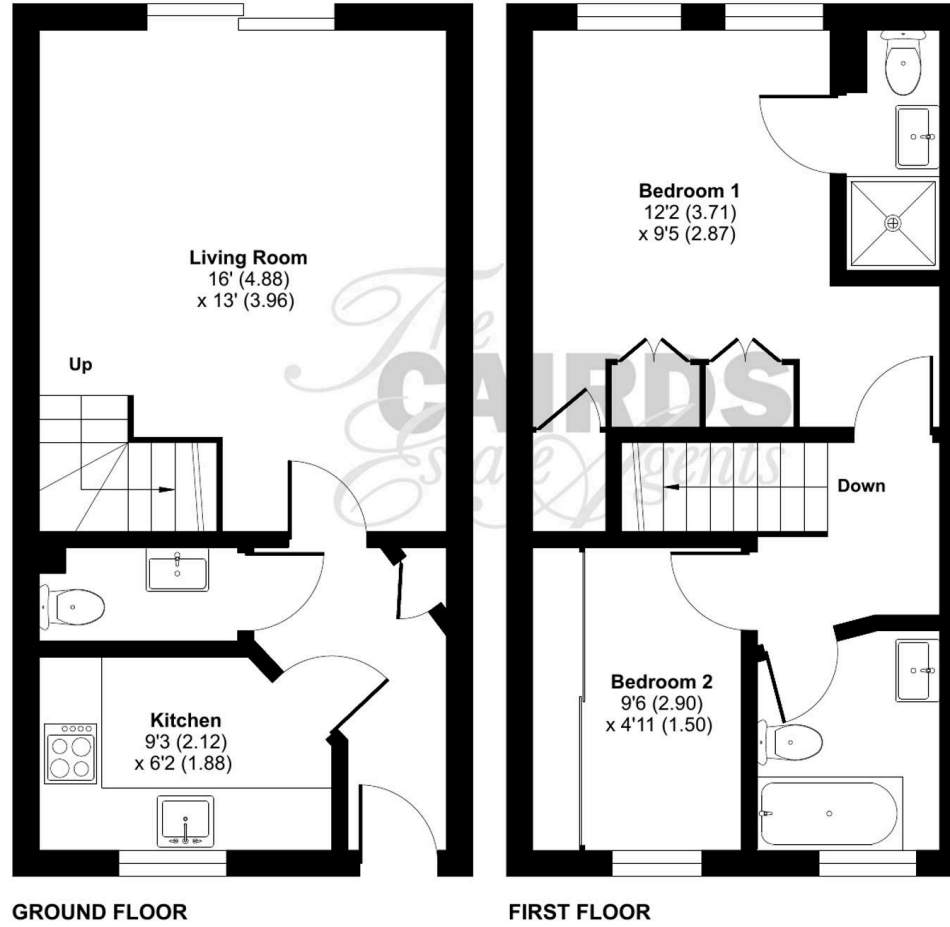
Outside, a private part-walled garden awaits, providing a serene outdoor space for al fresco dining or simply enjoying the fresh air. A covered carport and visitor parking ensures convenient parking and shelter for vehicles, adding to the property's appeal.

This property presents a rare opportunity to own a unique and well-maintained home with character in an idyllic setting. With its convenient location within a gated development and a peaceful village atmosphere, yet within close proximity of local shops and amenities, residents can enjoy the best of both worlds. Whether enjoying a quiet evening in the garden or entertaining friends in the cosy living room, this property offers a comfortable and inviting space for modern living. Don't miss the chance to make this 'cottage' style split-level maisonette your own retreat and enjoy the tranquil surroundings and convenient amenities that this home and location have to offer.

Meade Court, Walton On The Hill, Tadworth, KT20

Approximate Area = 680 sq ft / 63.1 sq

For identification only - Not to scale



Floor plan produced in accordance with RICS Property Measurement Standards incorporating International Property Measurement Standards (IPMS2 Residential). © nchecon 2024. Produced for Cairds. REF: 1192570





Cairds The Estate Agents

Cairds The Estate Agents, 128-130 High Street - KT19 8BT

01372 743033 • homes@cairds.co.uk • www.cairds.co.uk