



102 Scarisbrick New Road, Southport
Southport



NICHOLLS
& BARNES

ESTATE AGENTS

£495,000

102 Scarisbrick New Road

Southport

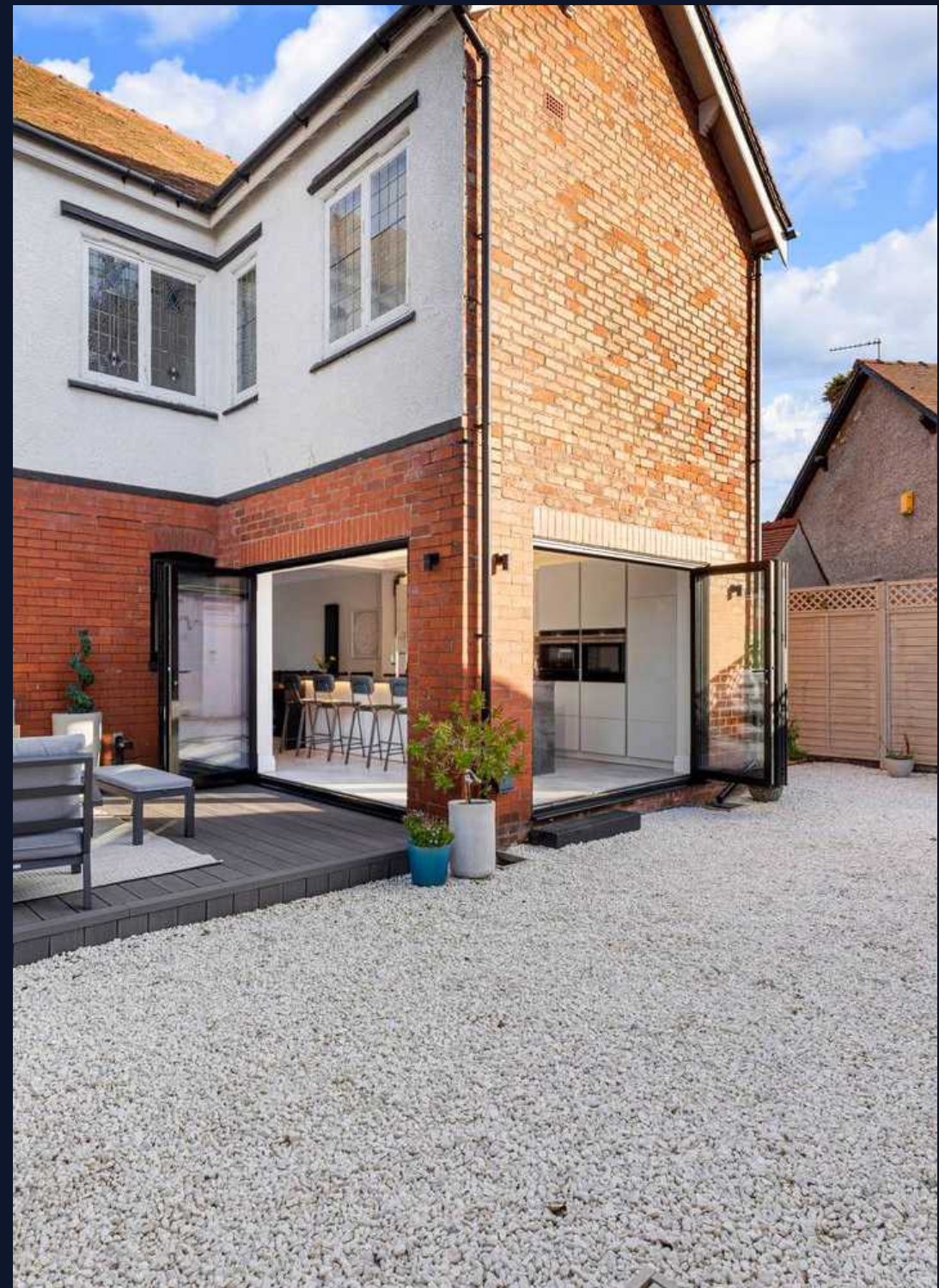
Council Tax band: E

Tenure: Freehold

EPC Energy Efficiency Rating: D

EPC Environmental Impact Rating: E

- Edwardian Detached Residence
- Beautifully Renovated
- Four Double Bedrooms
- Family Bathroom & Downstairs WC
- Open Plan Kitchen/Diner & Snug
- High Specification Kitchen
- Stunning Contemporary Decor Throughout
- Extensive Corner Plot
- Spacious Sun Terrace
- Large Gardens Outbuildings & Driveway



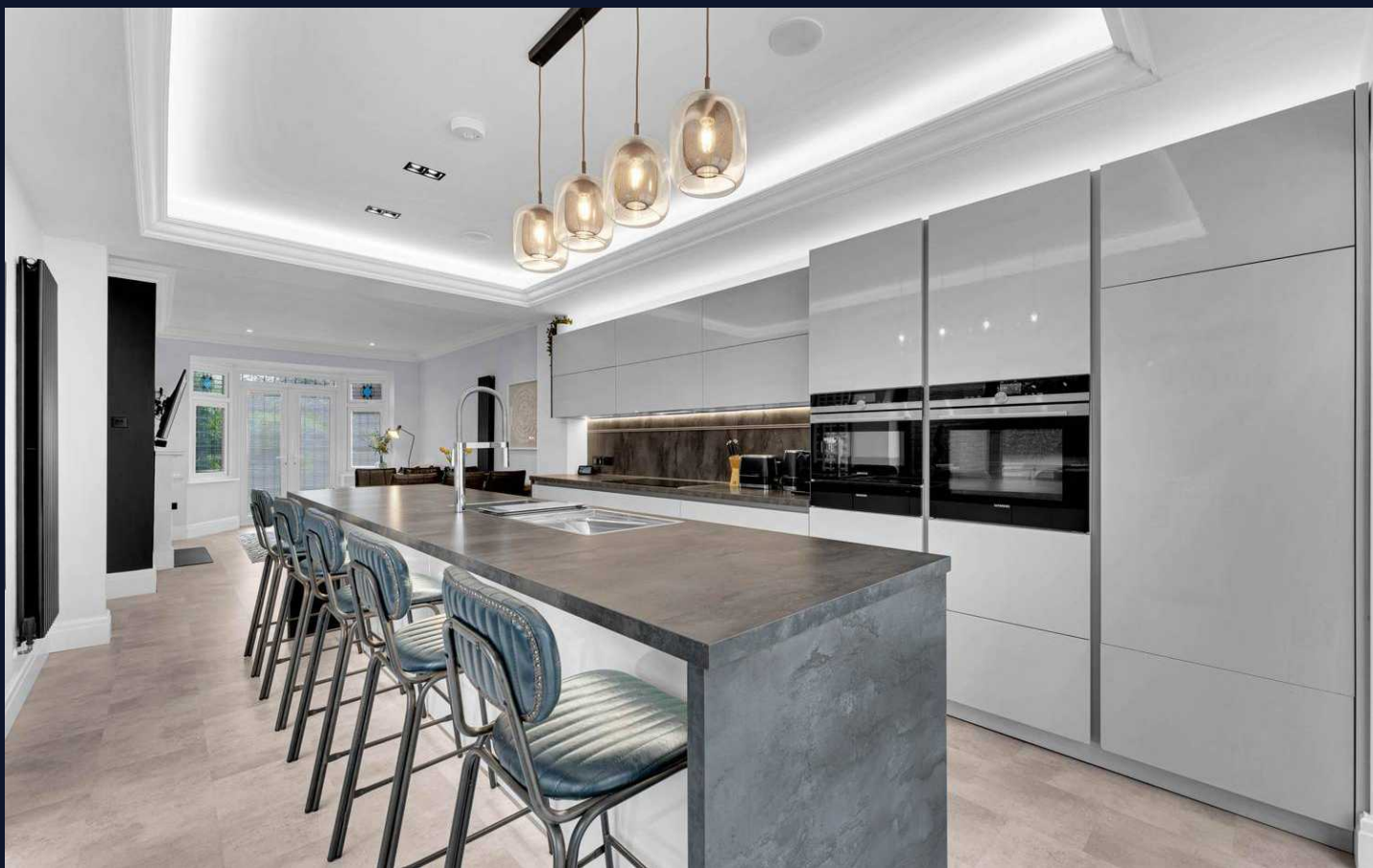
GARDEN

DOUBLE GARAGE

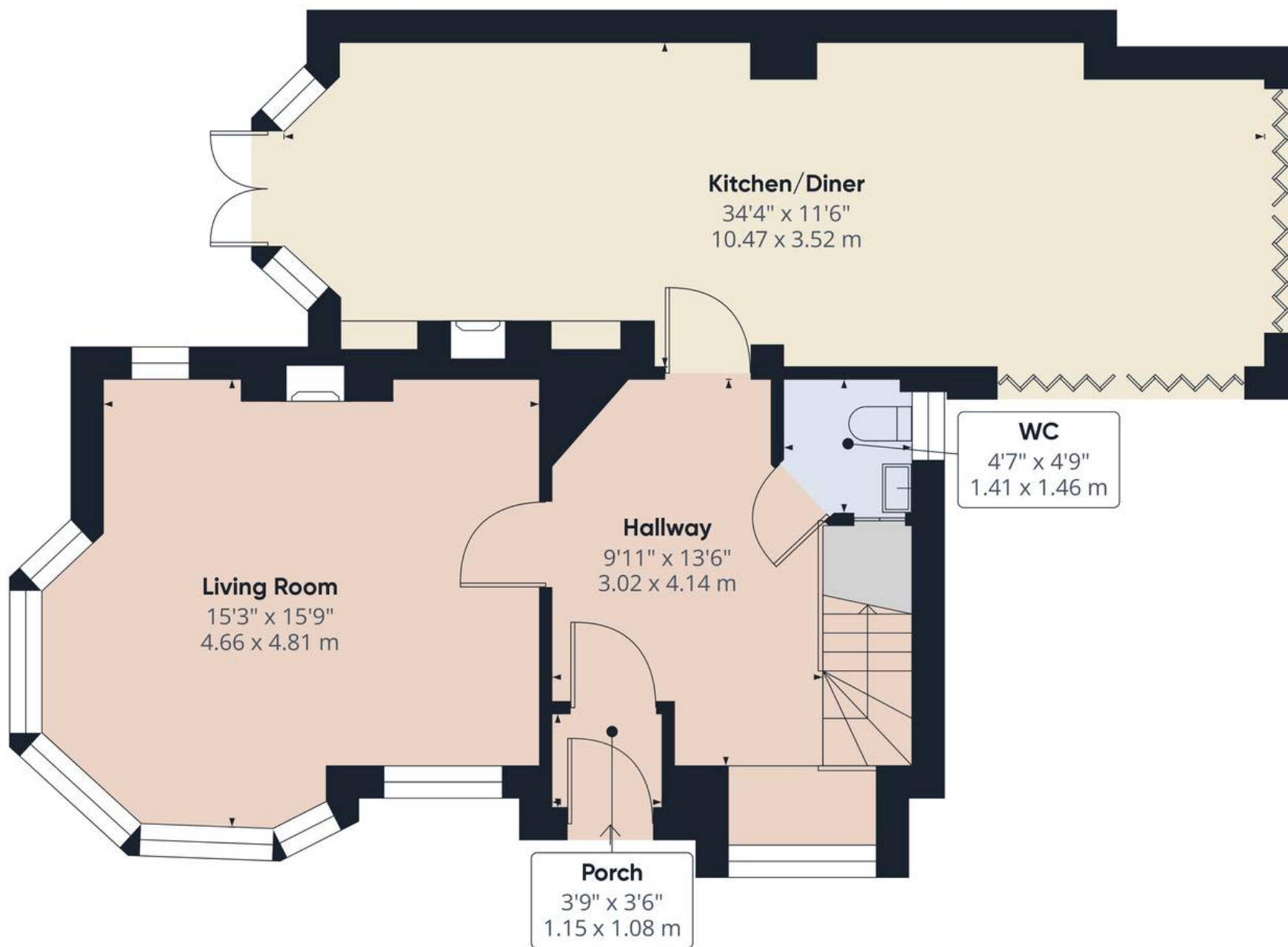
2 Parking Spaces

DRIVEWAY

6 Parking Spaces







Approximate total area⁽¹⁾

798.47 ft²

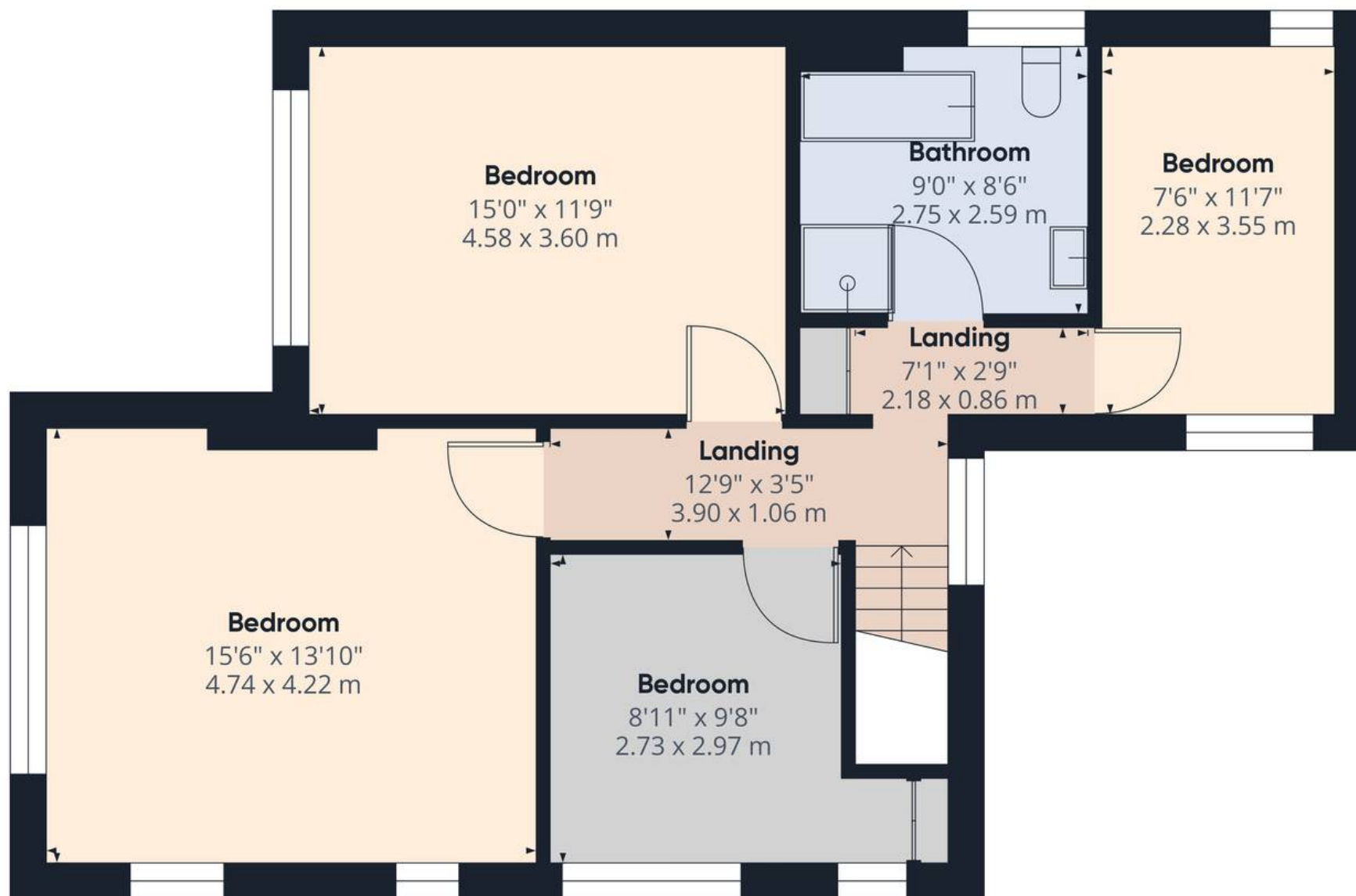
74.18 m²

(1) Excluding balconies and terraces

While every attempt has been made to ensure accuracy, all measurements are approximate, not to scale. This floor plan is for illustrative purposes only.

Calculations are based on RICS IPMS 3C standard.

GIRAFFE360



Approximate total area⁽¹⁾

720.32 ft²

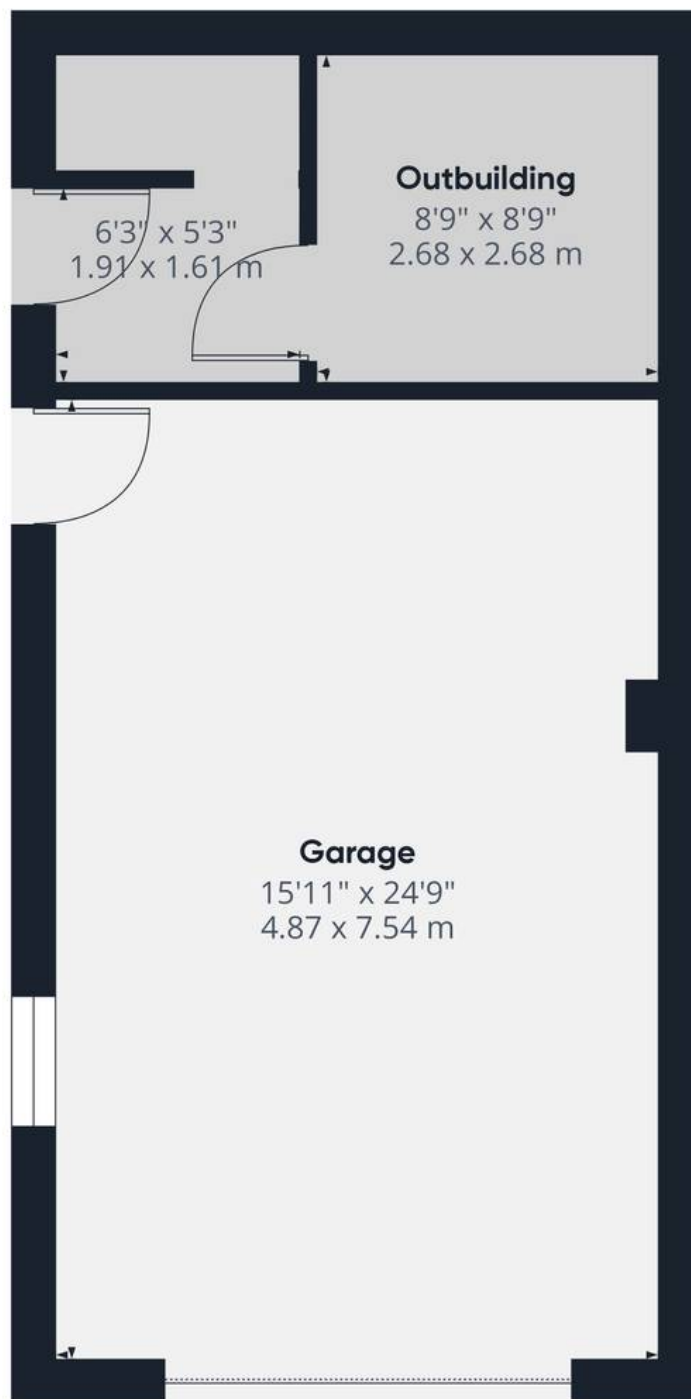
66.92 m²

(1) Excluding balconies and terraces

While every attempt has been made to ensure accuracy, all measurements are approximate, not to scale. This floor plan is for illustrative purposes only.

Calculations are based on RICS IPMS 3C standard.

GIRAFFE360



Floor 0 Building 2

Approximate total area⁽¹⁾

523.77 ft²

48.66 m²

(1) Excluding balconies and terraces

While every attempt has been made to ensure accuracy, all measurements are approximate, not to scale. This floor plan is for illustrative purposes only.

Calculations are based on RICS IPMS 3C standard.

GIRAFFE360



Nicholls and Barnes

43 Hoghton Street, Southport - PR9 0PG

01704 541 414 • sales@nichollsandbarnes.net • nichollsandbarnes.net



**NICHOLLS
& BARNES**

ESTATE AGENTS

