



Flat 16, Kilmore, Ilsham Marine Drive, Torquay - TQ1 2HU
£365,000





Flat 16, Kilmore

Ilsham Marine Drive, Torquay

Luxurious 2-bed 7th floor apartment in the prestigious coastal development at Kilmore, off of highly regarded Ilsham Marine Drive with stunning sea views. Secure entrance system, lift, modern kitchen, sitting room, sun lounge/dining room, bathroom, communal gardens, parking. Ideal coastal living.

Council Tax band: E

Tenure: Leasehold

EPC Energy Efficiency Rating: D

- Prestigious coastal development
- Stunning sea and coastal views
- Spacious sitting room
- Sun lounge/dining area
- Quality modern fitted kitchen with fitted Bosch appliances
- Two double bedrooms
- Electric heating and uPVC double glazing
- Undercroft parking
- Use of extensive communal gardens approaching 7 acres
- Four piece bathroom/WC plus separate WC



Flat 16, Kilmorie

Ilsham Marine Drive, Torquay

The property occupies a premium position just off of Ilsham Marine Drive within approximately 1/2 a mile from Wellswood Village with its array of shops, amenities and facilities and a stone's throw from Ilsham Valley and Meadfoot Beach. Torquay sea front and deep water marina are both within approximately 1.5 miles, ideal for boating enthusiasts. An early inspection is highly recommended to appreciate the luxury coastal living this seventh floor apartment can offer.

Absolute Sales & Lettings

Absolute Sales & Lettings Ltd, 13 Ilsham Road - TQ1 2JG

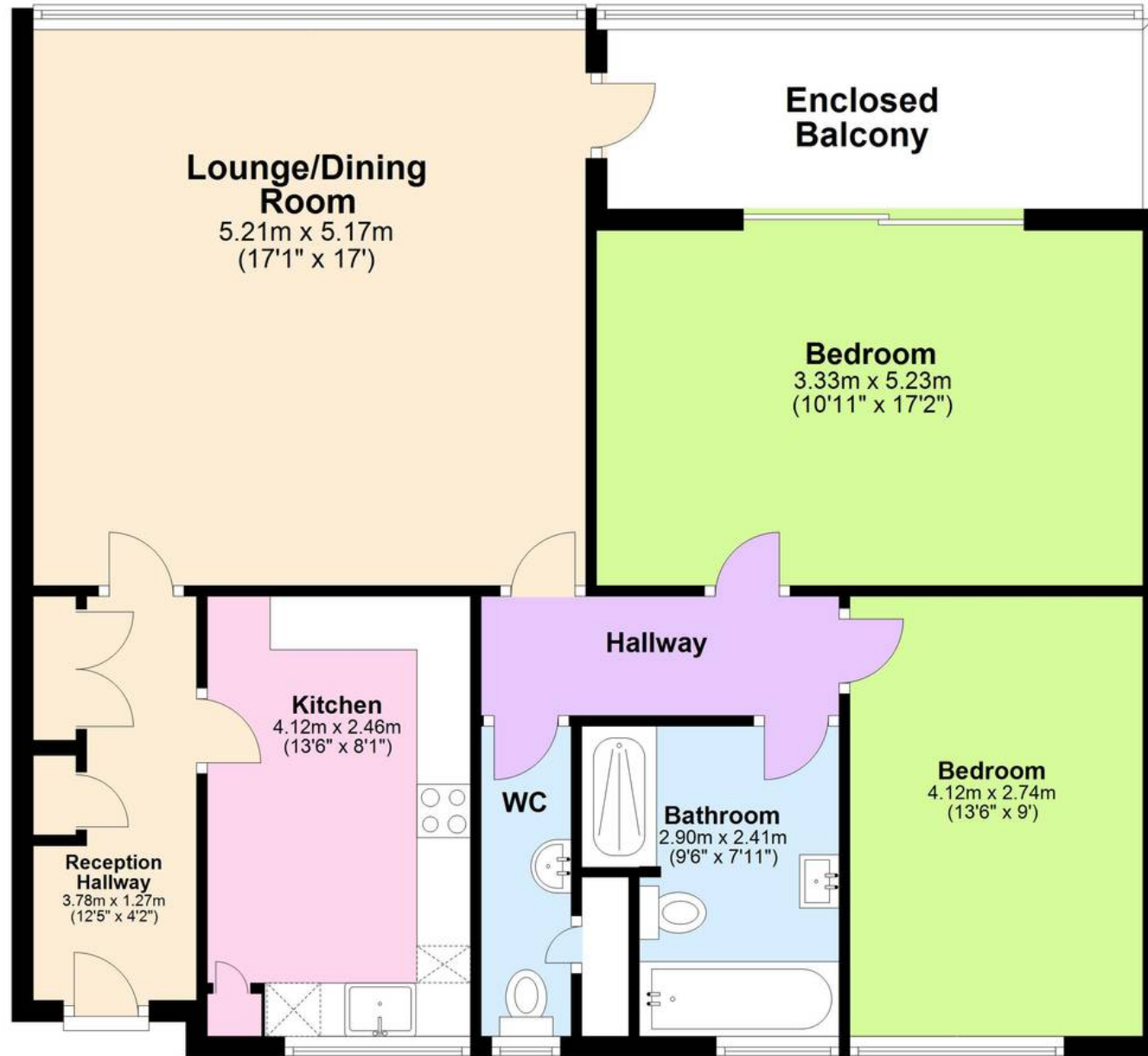
01803 214214

torquay@movewithabsolute.co.uk

movewithabsolute.co.uk/



Floor 7 with lift access



Approx
Plan produced using PlanUp.

