



30 Hilton Crescent, Worsley
£275,000

30 Hilton Crescent

Worsley, Manchester

Millbrooke Estate Agents are delighted to offer for sale this beautiful three-bedroom semi-detached property on Hilton Crescent. The property offers a perfect blend of modern living and charm in a sought-after location and comes complete with the freehold and the benefit of no onward chain.

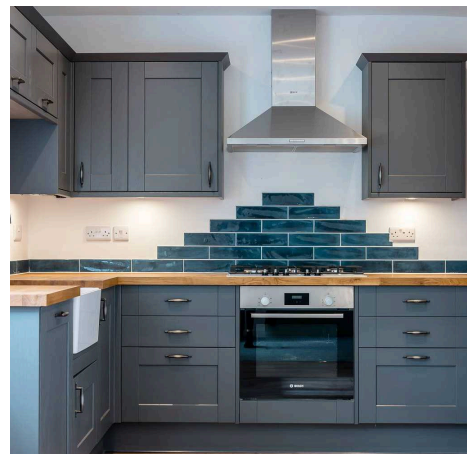
Council Tax band: B

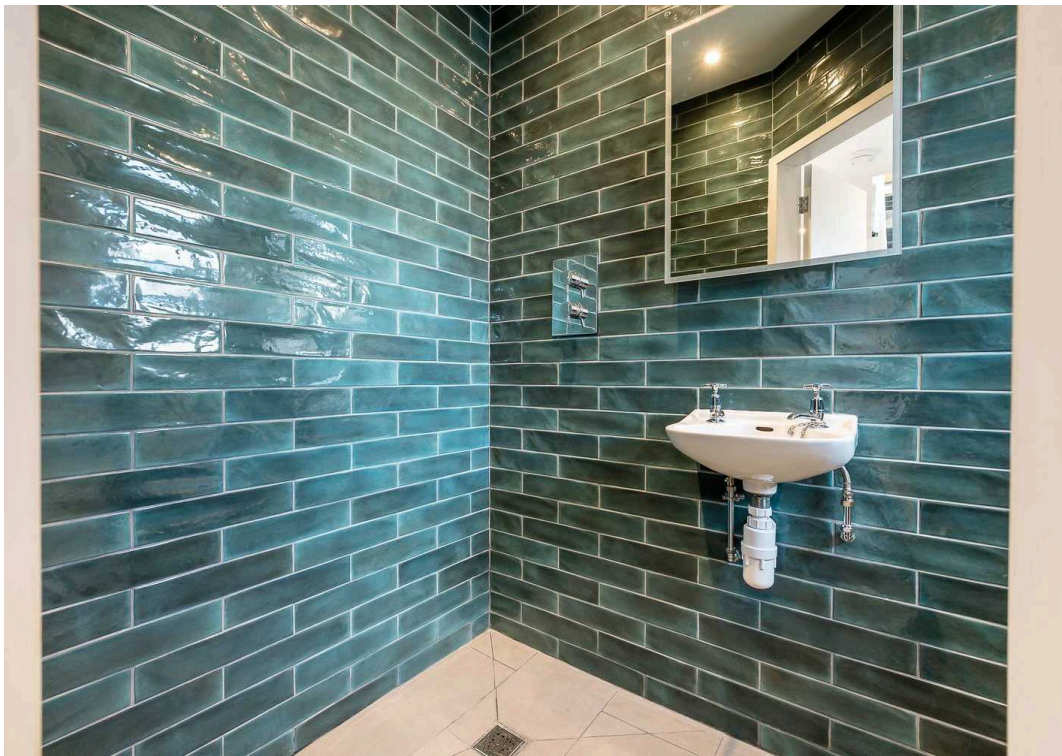
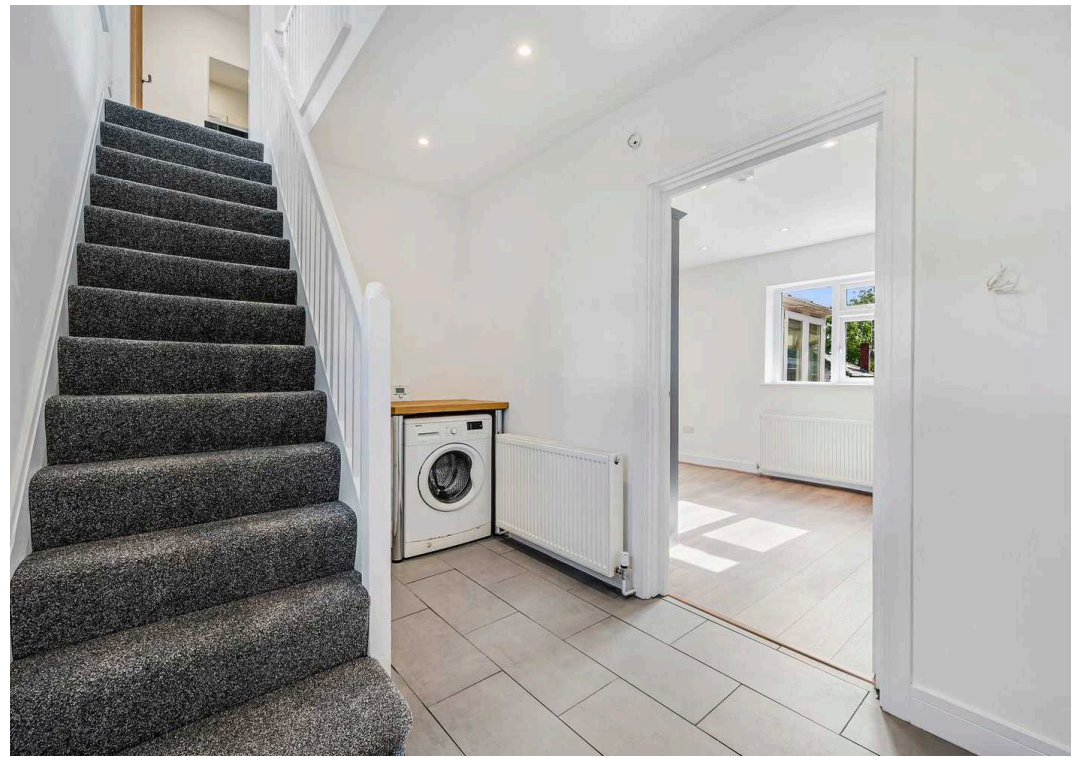
Tenure: Freehold

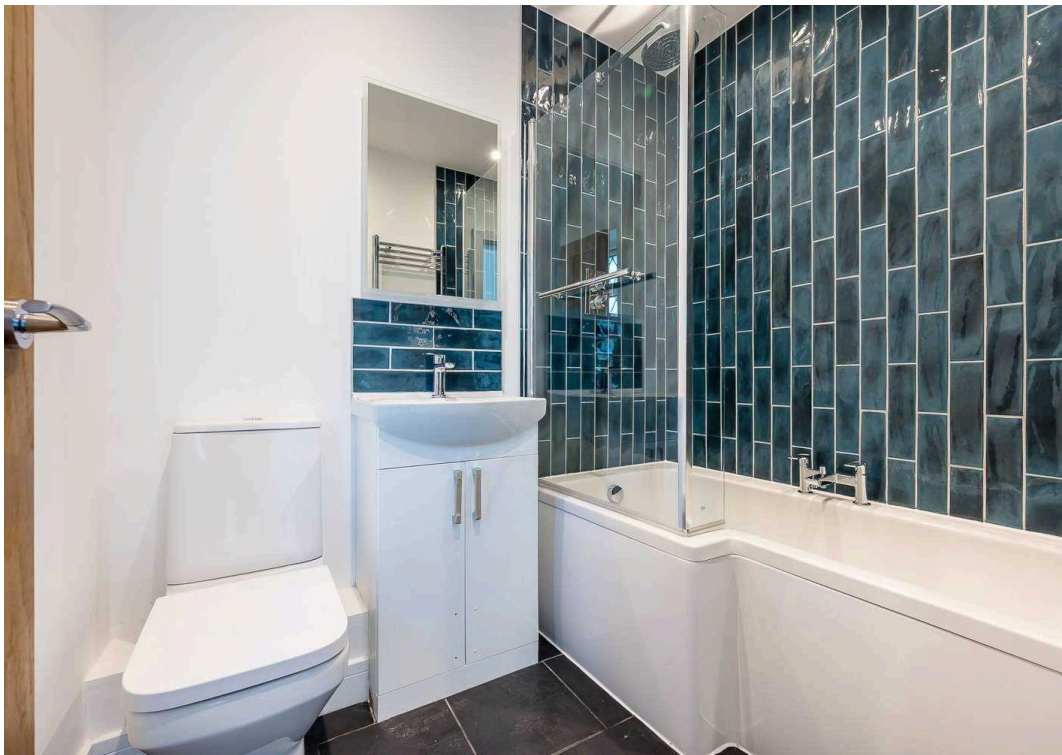
EPC Energy Efficiency Rating: A

EPC Environmental Impact Rating: A

- Fully Renovated Throughout
- Freehold Property
- No Onward Chain
- Excellent Energy Rating with Solar PV (Photovoltaic) panels
- Heart of Boothstown Location
- Three Double Bedrooms
- Driveway and Garage
- Private Rear Garden



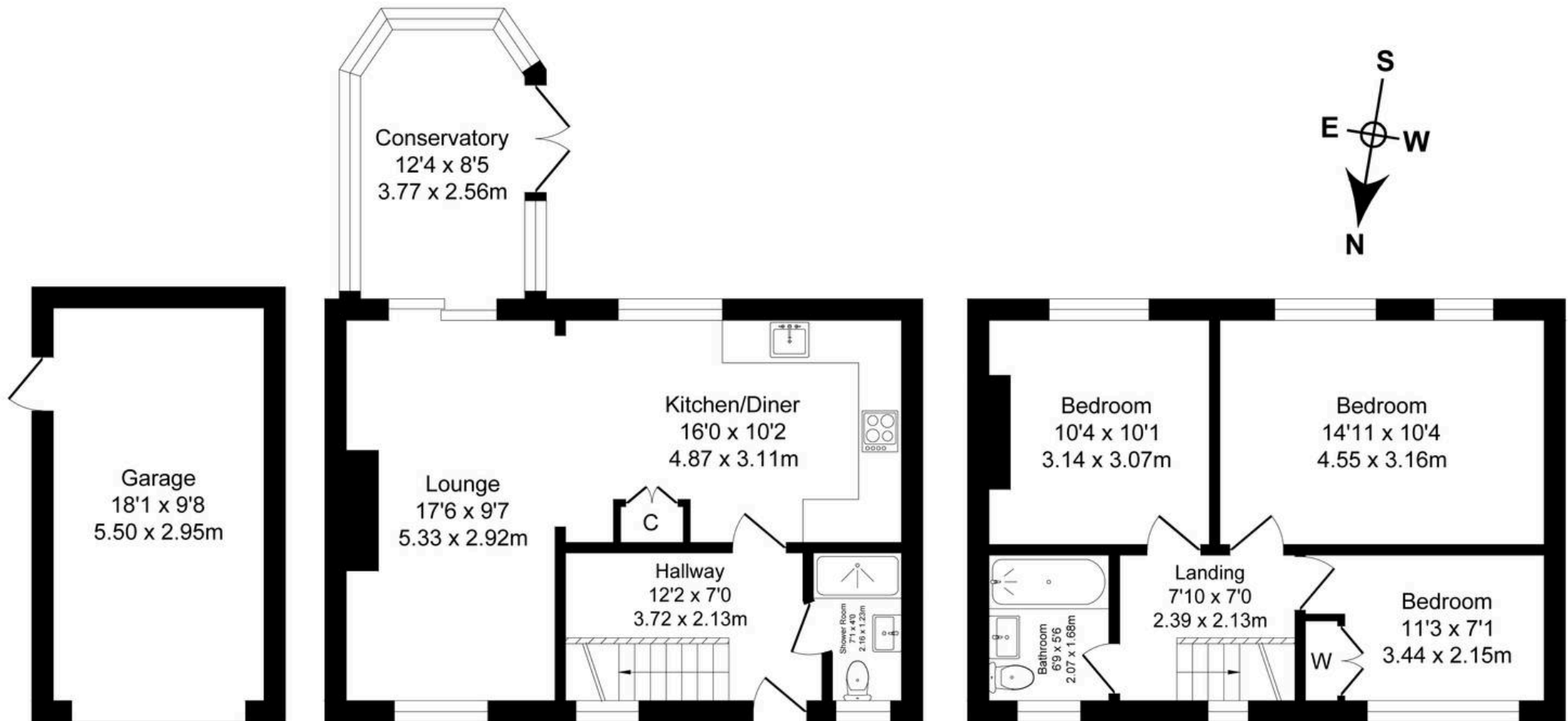




Hilton Crescent

Total Approx. Floor Area 1163 Sq.ft. (108.0 Sq.M.)

Surveyed and drawn by Lens Media for illustrative purposes only. Not to scale. Whilst every attempt was made to ensure the accuracy of the floor plan, all measurements are approximate and no responsibility is taken for any error.



Garage

Approx. Floor Area 174 Sq.Ft (16.2 Sq.M.)

Ground Floor

Approx. Floor Area 543 Sq.Ft (50.4 Sq.M.)

First Floor

Approx. Floor Area 446 Sq.Ft (41.4 Sq.M.)



Millbrooke Estate Agents

271 Mosley Common Road, Worsley, Manchester - M28 1BZ

0161 790 5154 • hello@millbrooke.co • millbrooke.co

