



206 Newton Drive

Blackpool, FY3 8JE

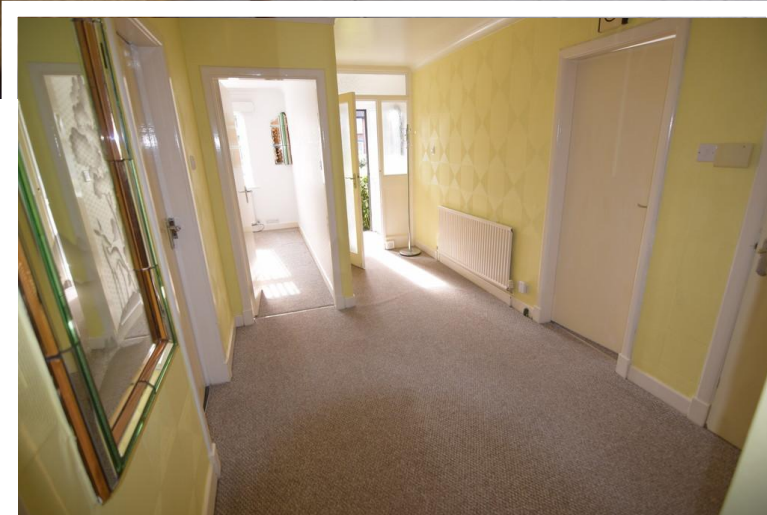
- **2 BED GROUND FLOOR FLAT**
- **WALKING DISTANCE OF HOSPITAL AND GOLF COURSE**
- **SUITABLE FOR RETIRED COUPLE**
- **MOVE IN COSTS £1723.04**

£800 pcm

EPC Rating '62'



Ground Floor Flat , 206 Newton Drive, Blackpool, Lancashire, FY3 8JE



Property Description

NEW TO MARKET 2 BEDROOM GROUND FLOOR APARTMENT, FACING STANLEY PARK & GOLF COURSE, AND WITHIN WALKING DISTANCE OF BLACKPOOL VICTORIA HOSPITAL. COMPRISING ENTRANCE HALLWAY, LARGE FULLY FITTED KITCHEN, THROUGH LOUNGE / DINING ROOM, 2 DOUBLE BEDROOMS WITH FITTED ROBES, 4 PIECE MODERN BATHROOM. SEPARATE WC GAS CENTRAL HEATING, DOUBLE GLAZED, ALLOCATED PARKING SPACE, ALARM GARDENER AND WINDOW CLEANER INCLUDED



KITCHEN/DINER

18' 17" x 14' 9" (5.92m x 4.5m) KITCHEN WITH RANGE OF WALL AND BASE UNITS BREAKFAST BAR & STOOLS, PLUMBED FOR WASHING MACHINE

LOUNGE

24' 72" x 13' 31" (9.14m x 4.75m) LARGE OPEN PLAN LOUNGE / DINING AREA, WITH FEATURE BAY WINDOW, FIRE PLACE, DOORS TO KITCHEN AND HALL



CONSERVATORY

7' 13" x 13' 03" (2.46m x 4.04m) CONSERVATORY AT THE REAR WITH HEATING, LIGHTING AND DOOR TO THE REAR

BEDROOM

10' 89" x 13' 22" (5.31m x 4.52m) FRONT BEDROOM WITH RANGE OF FITTED ROBES, OVERLOOKING THE GARDEN



BEDROOM

10' 92" x 12' 94" (5.38m x 6.05m) BEDROOM WITH RANGE OF FITTED ROBES

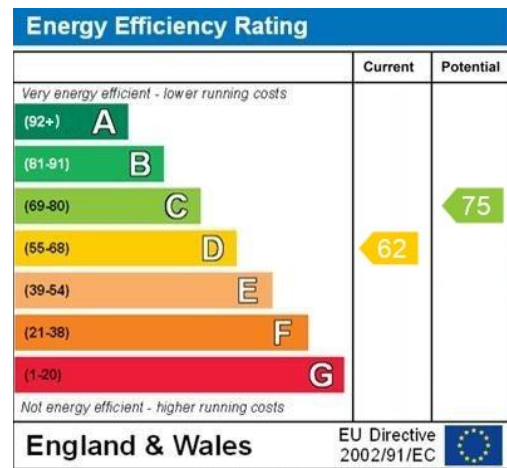
BATHROOM

7' 34" x 8' 29" (3m x 3.18m) MODERN 4 PIECE BATHROOM WITH SHOWER CUBICLE, WASH HAND VANITY UNIT, WC, BATH

TOILET

2' 51" x 6' 75" (1.91m x 3.73m) SEPARATE WC





WWW.EPC4U.COM

21 Counce Street
Blackpool
Lancashire
FY1 3LA

www.moveholmes.co.uk
01253 928200
enquiries@moveholmes.co.uk

Agents Note: Whilst every care has been taken to prepare these sales particulars, they are for guidance purposes only. All measurements are approximate and are for general guidance purposes only and whilst every care has been taken to ensure their accuracy, they should not be relied upon and potential buyers are advised to recheck the measurements