



5 School Road, Blackpool

Blackpool, FY4 5DS

- **3 BEDROOM SEMI DETACHED BUNGALOW**
- **SITUATED IN A MUCH SOUGHT AFTER AREA IN MARTON**
- **MOVE IN COSTS £2369.23**
- **GAS CENTRAL HEATING / DOUBLE GLAZED**

£1,100 pcm

EPC Rating '69'



Glenroy, 5 School Road, Blackpool, FY4 5DS



Property Description

NEW TO MARKET A LOVELY 3 BEDROOM SEMI DETACHED BUNGALOW PLACED IN A MUCH SOUGHT AFTER AREA OF MARTON. WITHIN EASY REACH OF THE M55, WALKING DISTANCE OF LOCAL SCHOOL.

COMPRISING ENTRANCE INTO LOUNGE, 3 BEDROOMS, MODERN SHOWER ROOM WITH WC AND WASH HAND BASIN, KITCHEN WITH RANGE OF WALL AND BASE UNITS, PLUMBED FOR WASHING MACHINE.

LARGE GARDEN TO REAR WITH MATURE SHRUBS. DRIVE FOR 2 CARS AND GARAGE WITH UP AND OVER DOOR





LOUNGE

15' 80" x 1' 07" (6.6m x 0.48m) LOUNGE WITH BAY WINDOW, LAMINATE FLOORING, INSET ELECTRIC FIRE

BEDROOM

11' 07" x 13' 37" (3.53m x 4.9m) DOUBLE BEDROOM WITH UPVC WINDOW, GAS RADIATOR

BEDROOM

11' 07" x 13' 37" (3.53m x 4.9m) DOUBLE BEDROOM WITH UPVC WINDOW, GAS RADIATOR

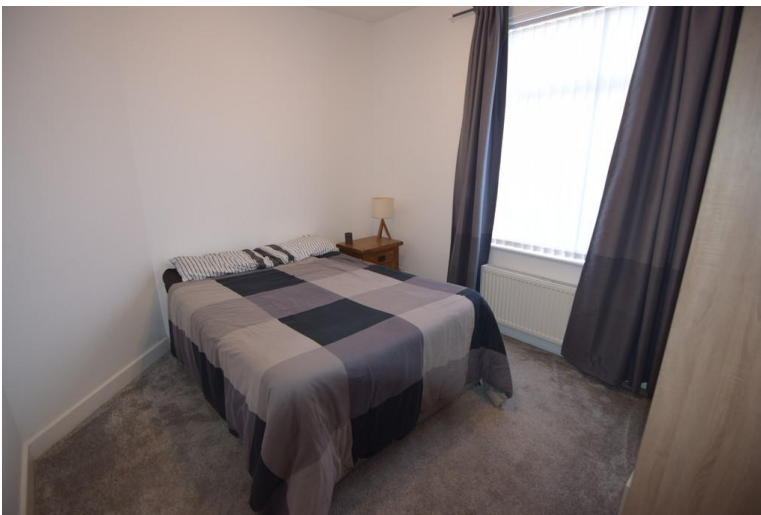


BEDROOM/STUDY

11' 32" x 6' 47" (4.17m x 3.02m) BEDROOM WITH UPVC WINDOW, GAS RADIATOR

BATHROOM

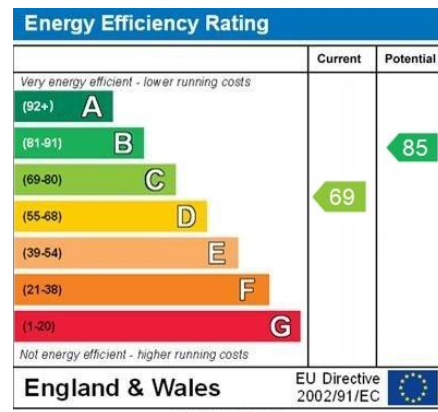
5' 40" x 8' 81" (2.54m x 4.5m) MODERN SHOWER ROOM WITH, SHOWER CUBICLE AND ELECTRIC SHOWER, WASH HAND BASIN, WC, PANELLED WALLS, UPVC WINDOW, GAS RADIATOR



KITCHEN

13' 82" x 8' 19" (6.05m x 2.92m) KITCHEN WITH RANGE OF WALL AND BASE UNITS, ELECTRIC COOKER, PLUMBED FOR WASHING MACHINE





WWW.EPC4U.COM

21 Counce Street
Blackpool
Lancashire
FY1 3LA

www.moveholmes.co.uk
01253 928200
enquiries@moveholmes.co.uk

Agents Note: Whilst every care has been taken to prepare these sales particulars, they are for guidance purposes only. All measurements are approximate and are for general guidance purposes only and whilst every care has been taken to ensure their accuracy, they should not be relied upon and potential buyers are advised to recheck the measurements