

FOR SALE



Tower Road, Branksome Park
OIE OF £350,000


MARTIN&CO

Tower Road, Branksome Park

£399,995

- GROUND FLOOR FLAT
- TWO DOUBLE BEDROOMS
- GARAGE & PARKING
- TWO BATHROOMS
- KITCHEN BREAKFAST ROOM
- COUNCIL TAX BAND E £2625pa

Stunning ground floor apartment located in the prestigious Branksome Park area of Poole.

This spacious two double bedroomed apartment boasts a large kitchen/diner with built-in appliances.

The living room features direct access to a private patio overlooking the communal gardens.

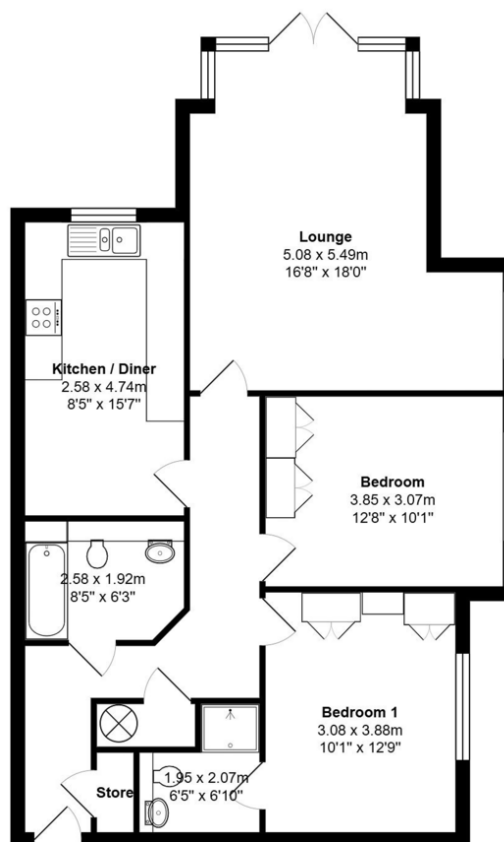
With no forward chain, this property is ready for you to move into & make your own!





Energy Efficiency Rating			
Score	Energy rating	Current	Potential
92+	A		
81-91	B		
69-80	C	78 C	79 C
55-68	D		
39-54	E		
21-38	F		
1-20	G		





Total Area: 82.4 m² ... 887 ft²

All measurements are approximate and for display purposes only

Martin & Co Poole

109 Commercial Road • • Poole • BH14 0JD

T: 01202 710171 • E: poole@martinco.com

01202 710171

<http://www.poole.martinco.com>



Accuracy: References to the Tenure of a Property are based on information supplied by the Seller. The Agent has not had sight of the title documents. A Buyer is advised to obtain verification from their Solicitor. Items shown in photographs including but not limited to carpets, fixtures and fittings are not included unless specifically mentioned within the sales particulars. They may however be available by separate negotiation. Buyers must check the availability of any property and make an appointment to view before embarking on any journey to see a property. No person in the employment of the agent has any authority to make any representation about the property, and accordingly any information given is entirely without responsibility on the part of the agents, sellers(s) or lessors(s). Any property particulars are not an offer or contract, nor form part of one. **Sonic / Laser Tape:** Measurements taken using a sonic / laser tape measure may be subject to a small margin of error. **All Measurements:** All Measurements are Approximate. **Services Not tested:** The Agent has not tested any apparatus, equipment, fixtures and fittings or services and so cannot verify that they are in working order or fit for the purpose. A Buyer is advised to obtain verification from their Solicitor or Surveyor.