



Norwich Road, Holverston - NR14 7PH



Norwich Road

Holverston, Norwich

TUCKED AWAY amongst PANORAMIC FIELD VIEWS, this DETACHED BARN STYLE HOME conceals over 1375 Sq. ft (stms) of accommodation within. Extended and EXTENSIVELY MODERNISED over the years including RE-ROOFING and NEW WINDOWS, the CHARACTERFUL BRICK and FLINT FACADE can be found to the outside, whilst a WEALTH of CHARACTER FEATURES can be found within, including EXPOSED TIMBER BEAMS, latch and brace doors, and VAULTED CEILINGS. WRAP AROUND GARDENS can be found to the front, with TWIN DRIVEWAYS offering extensive parking and electric car charging, whilst a COTTAGE STYLE rear garden enjoys a PRIVATE SETTING and tree lined views beyond. The accommodation includes a hall entrance with CLOAK SPACE and WC, leading to the 28' SITTING/DINING ROOM centred on a feature WOODBURNER, 18' KITCHEN, utility room, THREE DOUBLE BEDROOMS - all with STORAGE, family bathroom and 'JACK and JILL' style shower room.

Council Tax band: E

Tenure: Freehold

EPC Energy Efficiency Rating: E

- Tucked Away Rural Setting
- Panoramic Field Views
- Over 1375 Sq. ft (stms) of Accommodation
- 28' Sitting/Dining Room with Wood Burner
- 18' Kitchen/Breakfast Room
- Three Double Bedrooms
- Jack & Jill En Suite, W.C & Bathroom
- Two Driveways & Enclosed Garden

Holverston is a small hamlet between Rockland St. Mary and Hellington. Rockland St. Mary offers schooling, village pub and a combined shop with post office. The neighbouring village of Alington houses a popular village school and a Farm Shop. The A146 provides easy access into Norwich, the A47, Beccles and the East Coast, with the major villages, and the City of Norwich offering further amenities and excellent transport links by road and rail.

SETTING THE SCENE

This characterful home offers outstanding views across the adjacent countryside, whilst being tucked away in a private rural setting. The property enjoys a corner plot with ample off road parking and enclosed lawn gardens which wrap around the front and side of the property, with a wildlife pond to one side and a central footpath with wrought iron gates leading to the entrance porch and hall. The smaller of the driveways includes an electric car charging point, with planning permission granted to erect a cart lodge on the larger drive.

THE GRAND TOUR

Once inside, the hall entrance offers tiled flooring for ease of maintenance, with the character and charm of the property immediately visible. Timber latch and brace doors lead off to the adjacent reception rooms, with a useful walk-in cloakroom offering storage for coats and shoes, with a further door to a W.C complete with a white two piece suite and patterned tiled splash-backs. The sitting room leads off the main entrance, sitting under a grand vaulted ceiling with exposed timber beams and with a featured brick built fireplace, inset cast iron woodburner and pamment tiled hearth creating a focal point to the room. Views can be enjoyed across the fields opposite, along with the side and rear gardens via triple aspect windows, whilst two sets of French doors open to the rear garden. Fitted carpet runs through the main living space with ample room for soft furnishings and a dining table, whilst the kitchen is conveniently located next to the dining area.





Norwich Road

Holverston, Norwich

The kitchen itself has been designed to maximise the space creating a u-shaped arrangement of wall and base level units, including a central island and breakfast bar being the main focus. The window to the rear ensures a light and bright feel, with ample space for general white goods along with a Range style electric cooker with the extractor fan above. A door leads you back into the main hall entrance whilst tiled flooring runs underfoot and spotlighting can be found under the cupboards which highlight the solid woodwork surfaces. The utility room leads off the kitchen, extending the storage space, with room for laundry appliances and with a further door leading out to the front garden. From the kitchen, steps rise to an inner hallway and lobby with a useful built-in double storage cupboard and doors leading to the bedroom accommodation. The main double bedroom is the first on your right hand side, with window to front, and a large built-in double wardrobe. Heading down the lobby, herringbone style flooring and further storage can be found, with the main family bathroom including a period style white three piece suite complete with herringbone style tiled splash-backs, shower over the bath and tiled flooring underfoot. The further two double bedrooms have been extended and include a built-in double wardrobe and one with French doors leading out to the rear garden. Both enjoy use of the 'Jack & Jill' style en-suite shower room, with a three piece suite including a shower cubicle, tile splash-backs, and a large wall mounted hand wash basin with vanity storage below.

FIND US

Postcode : NR14 7PH

What3Words : ///occupations.mostly.lace. Use ///supporter.solves.chosen to find the driveway entrance.

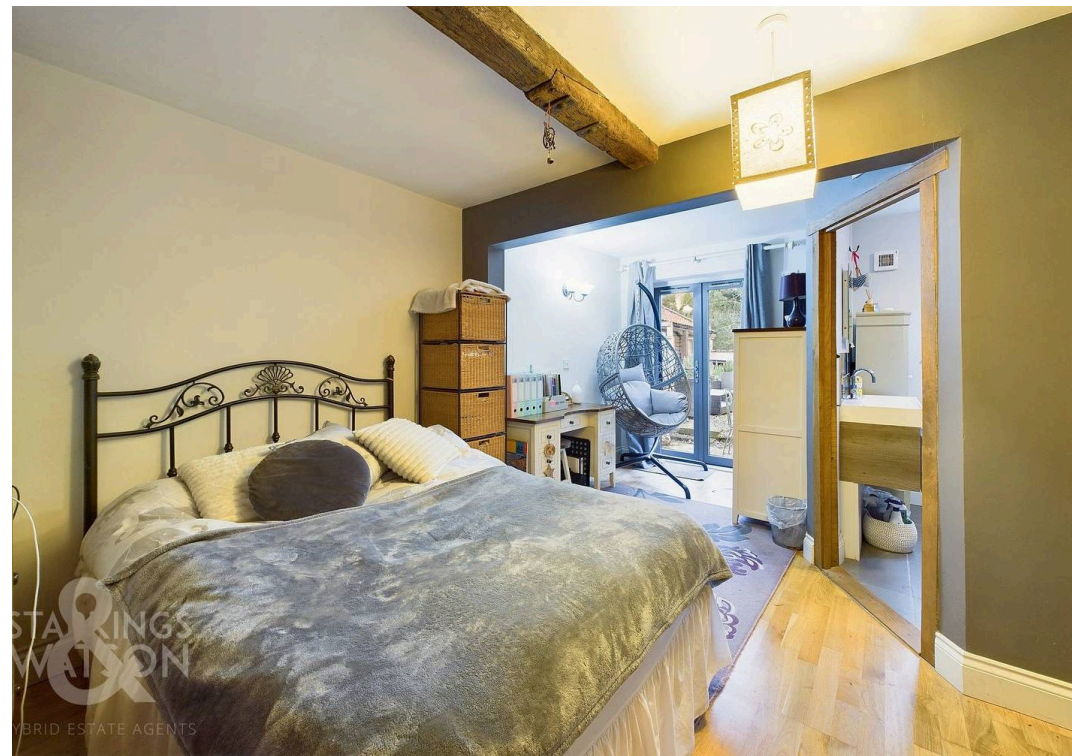
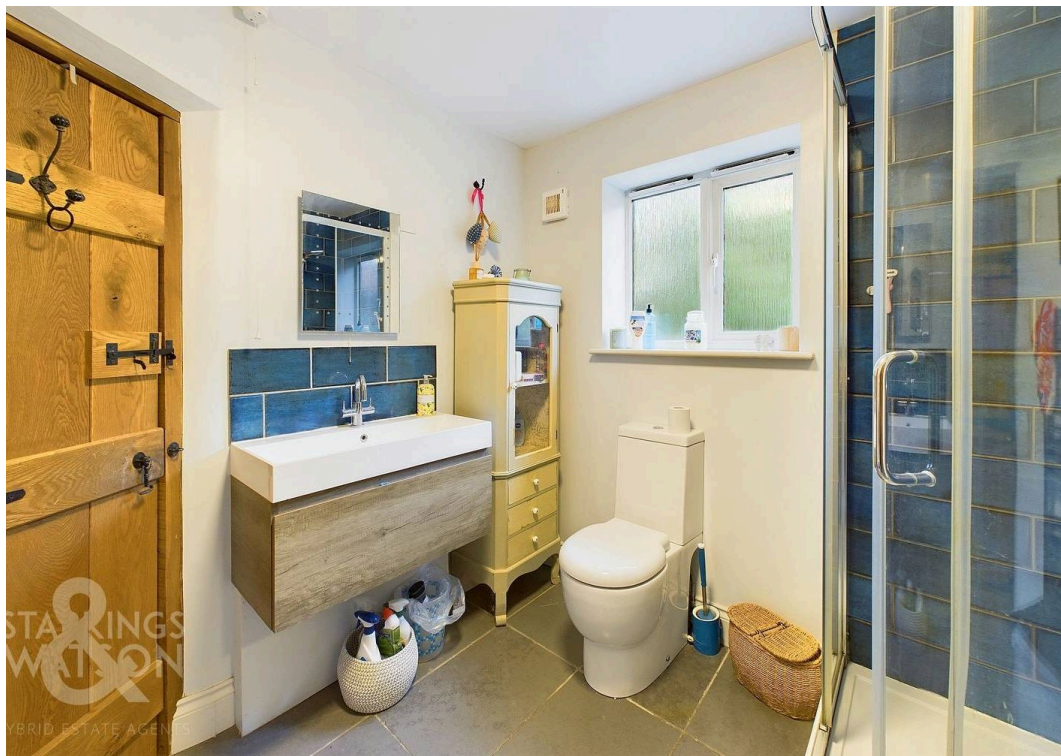
VIRTUAL TOUR

View our virtual tour for a full 360 degree of the interior of the property.

AGENTS NOTE

The garden wall within the property is listed, with the main building not listed. Access to the property is granted from the main road to the property. The main driveway is owned by Crown Point Estates. The vendors obtained planning permission to build a cart lodge within the main driveway. A borehole serves the 5 properties on the development, with shared costs for electric and maintenance. The property has use of its own private septic tank.

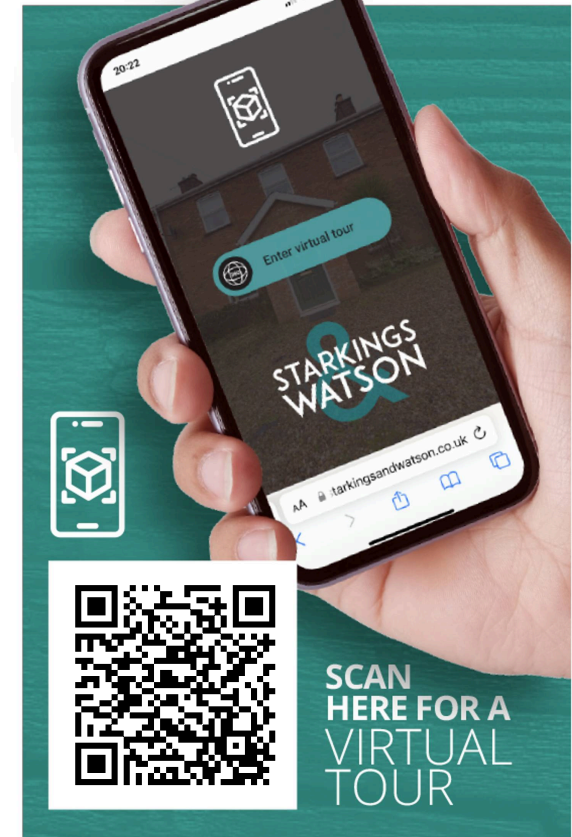
**STARKINGS
WATSON**
HYBRID ESTATE AGENTS

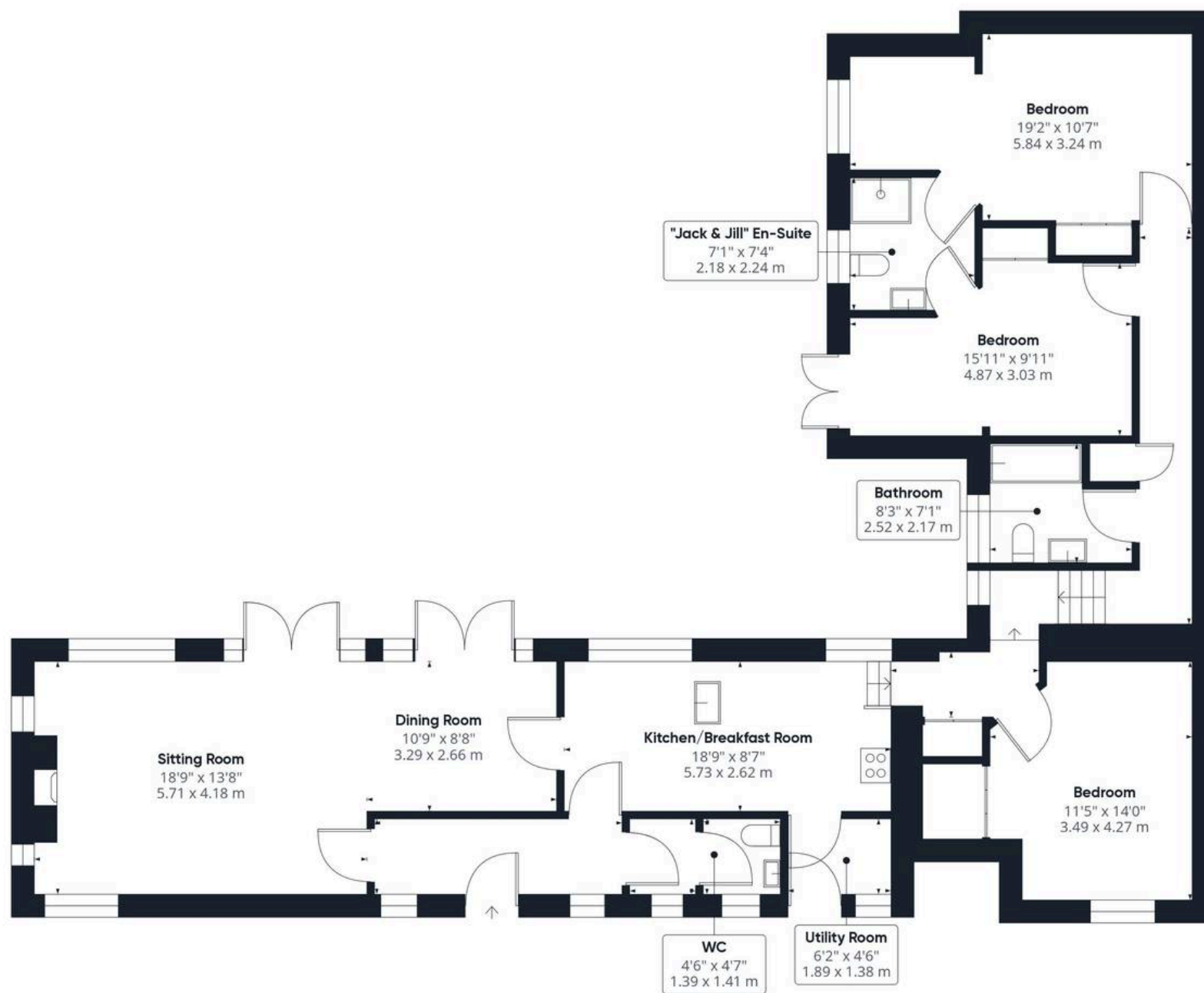




THE GREAT OUTDOORS

The garden is split into three key sections. As you greet the property, the shingle driveway offers ample parking, with wrap around lawn gardens including the wildlife pond and storage shed to one corner. The grade two listed wall which runs around the garden creates a courtyard feel, and includes a gate to the cottage style rear garden. Extensive planting, a circular patio, and shingled walkways flow around the garden, with room for further storage.





Approximate total area⁽¹⁾

1375.84 ft²

127.82 m²

(1) Excluding balconies and terraces

While every attempt has been made to ensure accuracy, all measurements are approximate, not to scale. This floor plan is for illustrative purposes only.

Calculations are based on RICS IPMS 3C standard.

GIRAFFE360



Starkings & Watson Hybrid Estate Agents

2A Shotesham Road, Poringland - NR14 7LE

01508 356456 • poringland@starkingsandwatson.co.uk • starkingsandwatson.co.uk

Disclaimer: Whilst every care has been taken to prepare these sales particulars, they are for guidance purposes only. All measurements are approximate and for general guidance purposes only and whilst every care has been taken to ensure their accuracy, they should not be relied upon and potential buyers are advised to recheck the measurements.