

An elegant apartment that offer stylish and practical living

King Henrys Road, Primrose Hill, London, NW3 3RB

 3  3  1

Guide Price £2,500,000





An elegant apartment that offer stylish and practical living

King Henrys Road, Primrose Hill, London, NW3 3RB

3 3 1

Guide Price £2,500,000



An elegant apartment that offer stylish and practical living

King Henrys Road, Primrose Hill, London, NW3 3RB

 3  3  1

Guide Price £2,500,000



About this property

Boasting a private entrance this three-bedroom apartment that offers stylish and practical living. The open-plan kitchen and reception area lead directly to a large 50ft southwest-facing garden, perfect for enjoying the outdoors.

The apartment includes a principal bedroom suite, two additional bedrooms (one with an en suite), a family bathroom, and a spacious utility room. It has been beautifully refurbished and benefits from wooden flooring and underfloor heating throughout.



An elegant apartment that offer stylish and practical living

King Henrys Road, Primrose Hill, London, NW3 3RB

 3  3  1

Guide Price £2,500,000



Local Information

The property is conveniently located to the green open spaces of Primrose Hill park which is approximately 0.2 miles away. The fashionable shops, cafes and restaurants on Regents Park Road are approximately 0.5 miles away. The transport links of Swiss Cottage underground stations (Jubilee line) is approximately 0.4 miles and Chalk Farm underground (Northern Line) is approximately 0.7 miles away. Both have excellent bus links in and out of London.



An elegant apartment that offer stylish and practical living

King Henrys Road, Primrose Hill, London, NW3 3RB

3 3 1

Guide Price £2,500,000



An elegant apartment that offer stylish and practical living

King Henrys Road, Primrose Hill, London, NW3 3RB



Guide Price £2,500,000

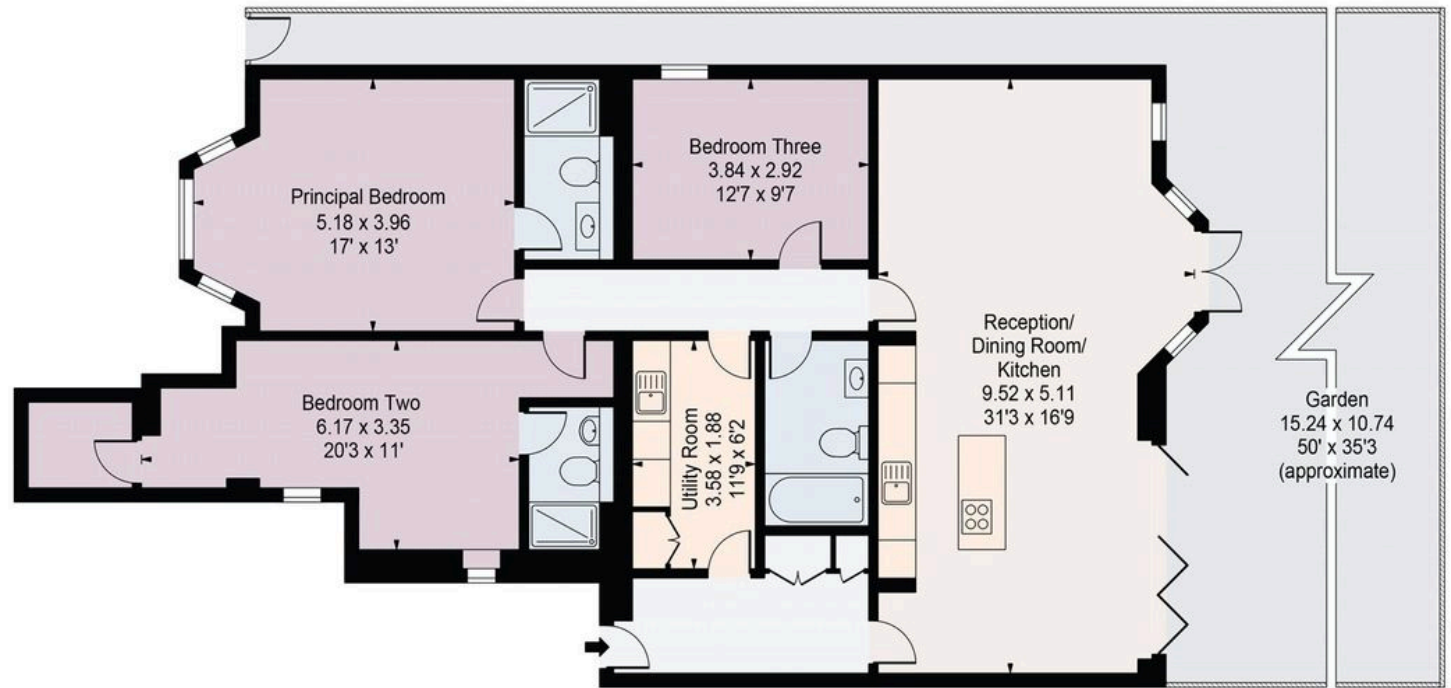


Plans

Approx. gross internal floor area

1,433 sq ft

King Henrys Road
Gross Internal Area(Approx)
Total = 133.13 Sq m / 1433 Sq ft



Ground Floor

Surveyed and drawn in accordance with the International Property Measurement Standards (IPMS 2: Residential)
For Illustration Purposes Only - Not To Scale

An elegant apartment that offer stylish and practical living

King Henrys Road, Primrose Hill, London, NW3 3RB



Guide Price £2,500,000



Key Information

Local Authority

London Borough of Camden

Council Tax

Band = F

Tenure

Share of Freehold
(Lease Expiry 2150)

Ground Rent

£100 per annum

Service Charge

£1,000 per annum

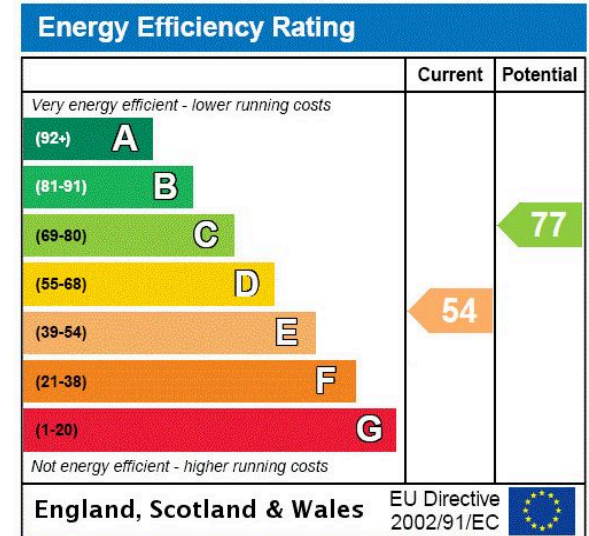
Services & Additional Information

Buildings insurance is included in service charge

EPC

EPC Rating = E

PROPERTY



An elegant apartment that offer stylish and practical living

King Henrys Road, Primrose Hill, London, NW3 3RB



Guide Price £2,500,000



Enquire



Gabriella Palmano

Primrose Hill

020 3428 2902

gabriella.palmano@savills.com

More Information



[View on website](#)



[View Digital Brochure](#)



[Property Search](#)

Viewing strictly by appointment

Published: November 2024

Property Ref: PHS240088

powered by
FluxPro

Important Notice: Savills, its clients and any joint agents give notice that 1: They are not authorised to make or give any representations or warranties in relation to the property either here or elsewhere, either on their own behalf or on behalf of their client or otherwise. They assume no responsibility for any statement that may be made in these particulars. These particulars do not form part of any offer or contract and must not be relied upon as statements or representations of fact. 2: Any areas, measurements or distances are approximate. The text, photographs and plans are for guidance only and are not necessarily comprehensive. It should not be assumed that the property has all necessary planning, building regulation or other consents and Savills have not tested any services, equipment or facilities. Purchasers must satisfy themselves by inspection or otherwise.