



36 Caberfeigh Close.

Redhill

Guide Price £600,000



36 Caberfeigh Close

A modern gem nestled in the serene setting of a gated development on the fringes of Reigate, this four bedroom end of terrace townhouse is a harmonious blend of space, style, and sophistication. The property boasts four generously proportioned double bedrooms spread across three floors, ensuring privacy and comfort for the whole family. The luxurious master bedroom comes complete with an en-suite bathroom, offering a peaceful retreat after a long day. The open-plan layout seamlessly connects the spacious reception room to the modern kitchen, creating a perfect space for entertaining guests or relaxing with loved ones. A conservatory and convenient cloakroom/wc add to the practicality and charm of this home. For added convenience, a garage and secure parking are included, ensuring peace of mind and ease of access.

Step outside to discover a landscaped garden that invites you to unwind and enjoy the fresh air. With side access, this outdoor space offers privacy and possibilities for al fresco dining, morning coffees, or simply basking in the sunshine. Take in the picturesque surroundings from the attractive Juliet balconies attached to the first and second-floor bedrooms, bringing a touch of elegance to every-day living. A first-floor utility room adds practicality to daily routines, making chores a breeze. To the front, a parking space for one vehicle and a garage to the side of the property provide ample space for storage and convenience. This residence offers the perfect balance of indoor comfort and outdoor serenity, making it a truly remarkable place to call home.

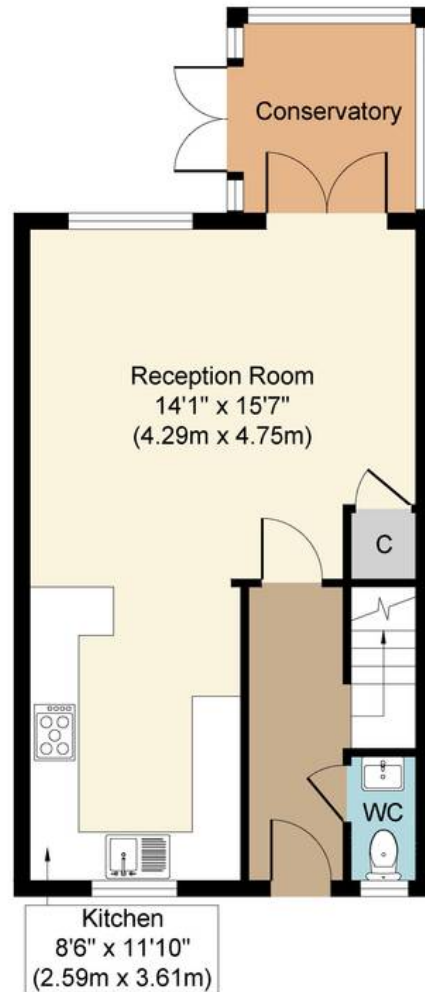
Council Tax band: F

Tenure: Freehold

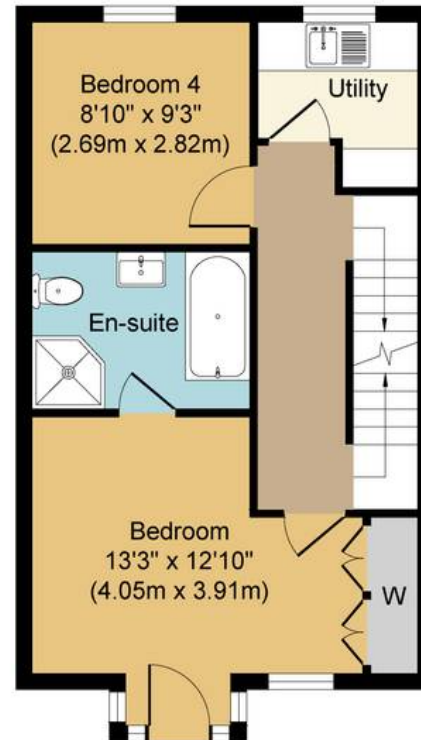
- Modern Gated Development On The Fringes Of Reigate
- Four Double Bedrooms Arranged Over Three Floors
- Master Bedroom With En-suite



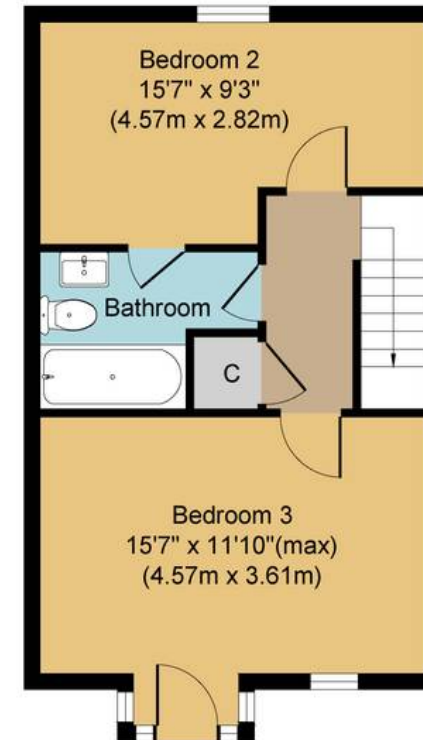




Ground Floor
Approximate Floor Area
469 sq. ft
(43.6 sq. m)



First Floor
Approximate Floor Area
420 sq. ft
(39.0 sq. m)



Second Floor
Approximate Floor Area
419 sq. ft
(38.9 sq. m)

Caberfeigh Close, RH1 **Approx. Gross Internal Floor Area 1,307 sq. ft. (121.50 sq. m)**

Whilst every attempt has been made to ensure the accuracy of the floor plan contained here, measurements of doors, windows, rooms and any other items are approximate and no responsibility is taken for any error, omission, or mis-statement. The measurements should not be relied upon for valuation, transaction and/or funding purposes. This plan is for illustrative purposes only and should be used as such by any prospective purchaser or tenant. The services, systems and appliances shown have not been tested and no guarantee as to their operability or efficiency can be given.

