



WILLIAM THOMAS
ESTATE AGENTS

TEL: (01204) 590150 FAX: (01204) 590131
EMAIL: INFO@WILLIAMTHOMASESTATES.CO.UK

DRAFT

PLEASE CONFIRM THAT ALL THE DETAILS ARE CORRECT TO THE BEST OF YOUR KNOWLEDGE.

PRINT NAME _____

SIGNED _____

DATED _____

Apartment 9 The Schoolhouse, School Street, Bromley Cross, Bolton, BL7 9DS

Welcome to The School House... This fantastic first floor, two-bedroom apartment is the jewel of this exclusive, stone built Eagley Schoolhouse luxury development. Lovingly renovated by the current owners, this property has superb attention to detail and high specification finishes throughout, complimenting the original features such as exposed trusses and vaulted ceilings. Viewing is highly recommended to appreciate this amazing apartment!

Step Inside...

After parking in the allocated space within the car park, step through the secure front door and up the steps to the apartment. The front door leads to the entrance hallway, with a large storage to the left which offers plenty of space to organise your shoes and coats, as well as access to the loft space for additional storage. Follow the hallway around to the lounge – an impressive space with ornate, exposed wooden trusses and plenty of natural light thanks to the skylights and Velux windows. Smart sliding doors separate the kitchen, allowing you to decide between a more open plan feel, ideal for hosting dinner parties with friends! There are a range of wooden base and wall units with sleek quartz worktops and a Belfast sink, as well as plumbing provisions for a washing machine, cooker and fridge-freezer.

Sleeping Quarters...

The master bedroom is truly impressive, boasting high vaulted ceilings and exposed wooden tresses with ironmongery. There's plenty of space for a king size bed alongside your furniture, and a Velux window offers peaceful leafy views of Eagley Valley. Next door is a second double-sized bedroom which would function equally well as a home office, guest bedroom or dressing room. Completing the apartment is a beautiful 3-piece bathroom, part tiled in neutral marbled tones, with a shower over the claw-foot bathtub, indulgently large Heritage wash basin, mid-height cistern W.C., and traditional radiator with towel rail. Bespoke solid wooden cupboards sit in the alcove and offer plenty of storage for your toiletries. The apartment also benefits from an allocated parking space and guest parking, communal gardens and security intercom system. All communal areas are covered by CCTV for security and peace of mind.

Out & About...

The School House is situated at Eagley Valley, acknowledged as an area of high residential demand and offers a vibrant atmosphere with a mix of apartments set within the two converted cotton mills and modern town houses making this a popular setting for professionals, people downsizing and families alike.

Apartment 9 The Schoolhouse, School Street, Bromley Cross, Bolton, BL7 9DS

Served by excellent local amenities including shopping, schools and leisure facilities and with easy access to open countryside.

A truly stunning apartment that must be viewed!

£200,000

www.williamthomasstates.co.uk

454 Darwen Road Bromley Cross Bolton



WILLIAM THOMAS
ESTATE AGENTS

TEL: (01204) 590150 FAX: (01204) 590131
EMAIL: INFO@WILLIAMTHOMASESTATES.CO.UK



- Stunning Two Bedroom Apartment
- Historic Grade II Listed Property
- High Quality Finishes Throughout with Original Character
- Lounge
- Kitchen
- Beautiful 3-Piece Bathroom
- Quiet Location
- Close to Countryside & Local Amenities

Apartment 9 The Schoolhouse, School Street, Bromley Cross, Bolton, BL7 9DS

Welcome to The School House... This fantastic first floor, two-bedroom apartment is the jewel of this exclusive, stone built Eagley Schoolhouse luxury development. Lovingly renovated by the current owners, this property has superb attention to detail and high specification finishes throughout, complimenting the original features such as exposed trusses and vaulted ceilings. Viewing is highly recommended to appreciate this amazing apartment!

Step Inside...

After parking in the allocated space within the car park, step through the secure front door and up the steps to the apartment. The front door leads to the entrance hallway, with a large storage to the left which offers plenty of space to organise your shoes and coats, as well as access to the loft space for additional storage. Follow the hallway around to the lounge – an impressive space with ornate, exposed wooden trusses and plenty of natural light thanks to the skylights and Velux windows. Smart sliding doors separate the kitchen, allowing you to decide between a more open plan feel, ideal for hosting dinner parties with friends! There are a range of wooden base and wall units with sleek quartz worktops and a Belfast sink, as well as plumbing provisions for a washing machine, cooker and fridge-freezer.

Sleeping Quarters...

The master bedroom is truly impressive, boasting high vaulted ceilings and exposed wooden trusses with ironmongery. There's plenty of space for a king size bed alongside your furniture, and a Velux window offers peaceful leafy views of Eagley Valley. Next door is a second double-sized bedroom which would function equally well as a home office, guest bedroom or dressing room. Completing the apartment is a beautiful 3-piece bathroom, part tiled in neutral marbled tones, with a shower over the claw-foot bathtub, indulgently large Heritage wash basin, mid-height cistern W.C., and traditional radiator with towel rail. Bespoke solid wooden cupboards sit in the alcove and offer plenty of storage for your toiletries. The apartment also benefits from an allocated parking space and guest parking, communal gardens and security intercom system. All communal areas are covered by CCTV for security and peace of mind.

Out & About...

The School House is situated at Eagley Valley, acknowledged as an area of high residential demand and offers a vibrant atmosphere with a mix of apartments set within the two converted cotton mills and

modern town houses making this a popular setting for professionals, people downsizing and families alike. Served by excellent local amenities including shopping, schools and leisure facilities and with easy access to open countryside.

A truly stunning apartment that must be viewed!

£200,000

www.williamthomasestates.co.uk

454 Darwen Road Bromley Cross Bolton

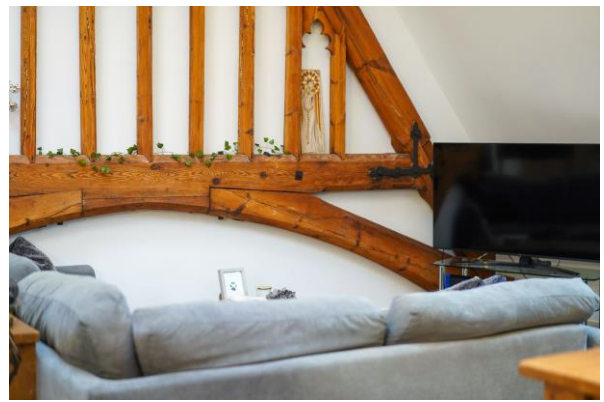
Front Elevation



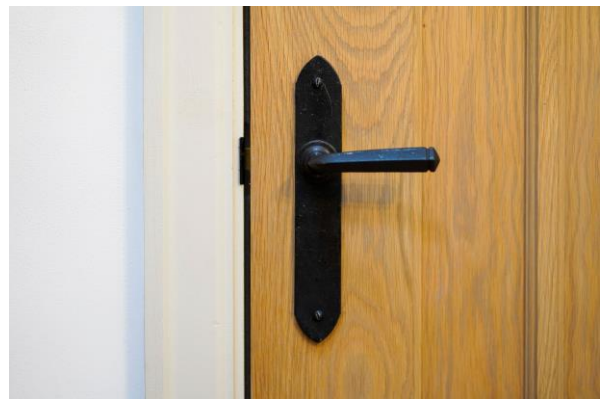
Entrance Hallway



Lounge



Lounge Additional Pictures





Kitchen



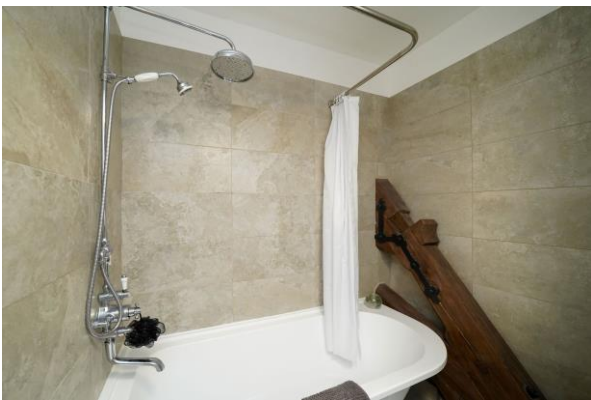
Master Bedroom



Bedroom Two



Bathroom



Bathroom Additional Pictures





Agents Notes

William Thomas Estates for themselves and for vendors or lessors of this property whose agents they are given notice that: (i) the particulars are set out as a general outline only for the guidance of intended purchasers or lessees and do not constitute nor constitute part of an offer or a contract. (ii) all descriptions, dimensions, reference to condition and necessary permissions for use and occupation and other details are given without responsibility and any intending purchasers or tenants should not rely on them as statements or representations of fact but must satisfy themselves by inspection or otherwise as to the correctness of each of them (iii) no person in the employment of William Thomas Estates has authority to make or give any representations or warranty whatever in relation to this property