



Flat 28, Castle Court River Park, Marlborough

Guide Price **£129,000**

mcfarlane
mcfarlane
property.com

Castle Court River Park, Marlborough

Description

This charming apartment is located in a prime spot within the development and features well-maintained accommodation. It boasts an entrance hallway, a shower room, a fitted kitchen, a generous living/dining room, and a lovely master bedroom with fitted wardrobes.

Castle Court is a fully serviced building, offering residents the ability to live independently. Access is secure, with the main entrance reserved for residents, while visitors can enter via a call system in the lobby. The ground floor includes a large communal lounge for social gatherings and a shared laundry facility. Each room is equipped with an emergency pull cord for immediate assistance if required. It has a part-time manager available in Reception on weekdays

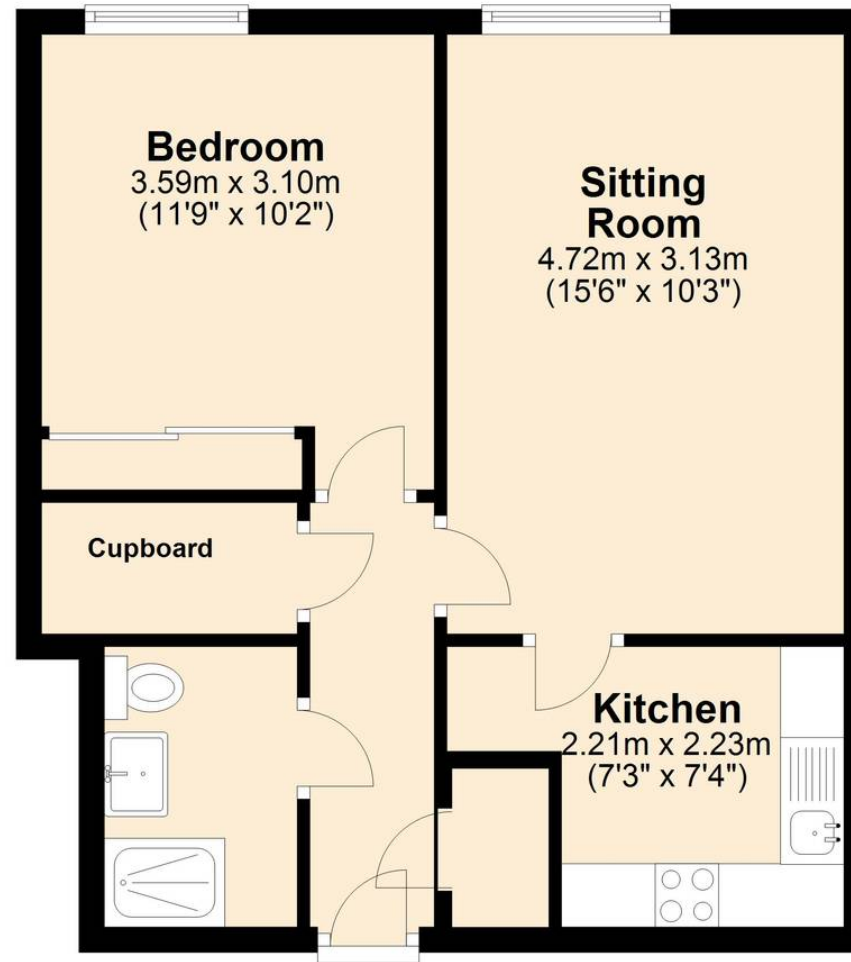
Outside

The beautiful communal gardens, through which the River Kennet flows, offer a tranquil setting, along with dedicated parking.



First Floor

Approx. 43.4 sq. metres (467.0 sq. feet)



Total area: approx. 43.4 sq. metres (467.0 sq. feet)

McFarlane Sales & Lettings

McFarlane Sales & Letting, 106 High Street - SN8 1LT

01672
514380

• marlborough@mcfarlaneproperty.com • www.mcfarlaneproperty.com/

mcfarlane
property.com