

39-41 High Street, Maidenhead, Berkshire SL6 1JF

Tel: 01628 674234 Fax: 01628 785432

Email: property@braxtons.co.uk

braxtons.co.uk



Residential Sales | Land & New Homes | Properties to Let | Landlords, Lettings and Management Services



PRICE: £210,000 LEASEHOLD

18 ALDEBURY ROAD, MAIDENHEAD, BERKSHIRE, SL6 7HB

CASH BUYERS ONLY DUE TO SHORT LEASE – A two double bedroom first floor maisonette providing, in our opinion, generous living accommodation, located on this popular development on the outskirts of Maidenhead and conveniently located for local schools, shops and Furze Platt Halt (branch line to Maidenhead/Elizabeth Line). The property features a living/dining room with access onto a balcony, kitchen, two double bedrooms, a modern bathroom and a garage in a nearby block..

The property is offered for sale with no onward chain.

***ENTRANCE PORCH WITH STAIRS RISING TO FIRST FLOOR *LIVING/DINING ROOM WITH ACCESS TO BALCONY *KITCHEN *TWO DOUBLE BEDROOMS *BATHROOM *DOUBLE GLAZING *GAS HEATING *GARAGE IN NEARBY BLOCK *NO CHAIN *LEASE TERM REMAINING IS APPROX. 40 YEARS *EPC RATING D *COUNCIL TAX BAND C**

ACCOMMODATION





For clarification we wish to inform prospective purchasers that we have prepared these sales particulars as a general guide. We have not carried out a detailed survey nor tested the services, appliances and specific fittings. Room sizes should not be relied upon for carpets, furnishings and appliances. Whilst these particulars are believed to be correct their accuracy is not guaranteed and are given without responsibility. They do not form part of any contract.

Approximate Gross Internal Area
Ground Floor = 4.1 sq m / 44 sq ft
First Floor = 72.3 sq m / 778 sq ft
Total = 76.4 sq m / 822 sq ft

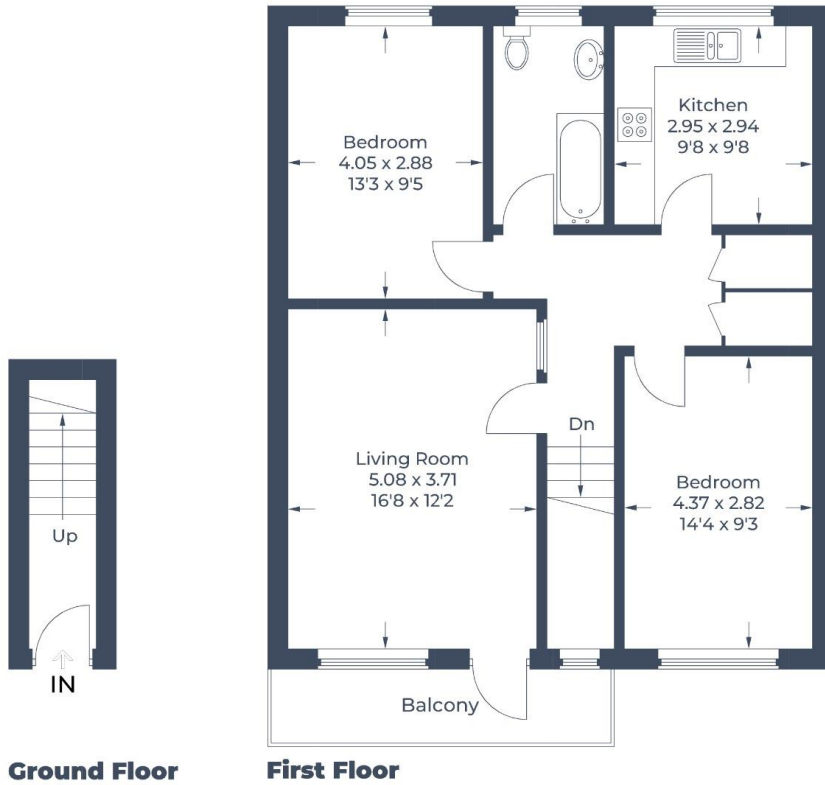


Illustration for identification purposes only,
measurements are approximate, not to scale.
© CJ Property Marketing Produced for Braxton

