



2 Walnut Tree Close, Bourne End

Guide Price £475,000



Robertsons

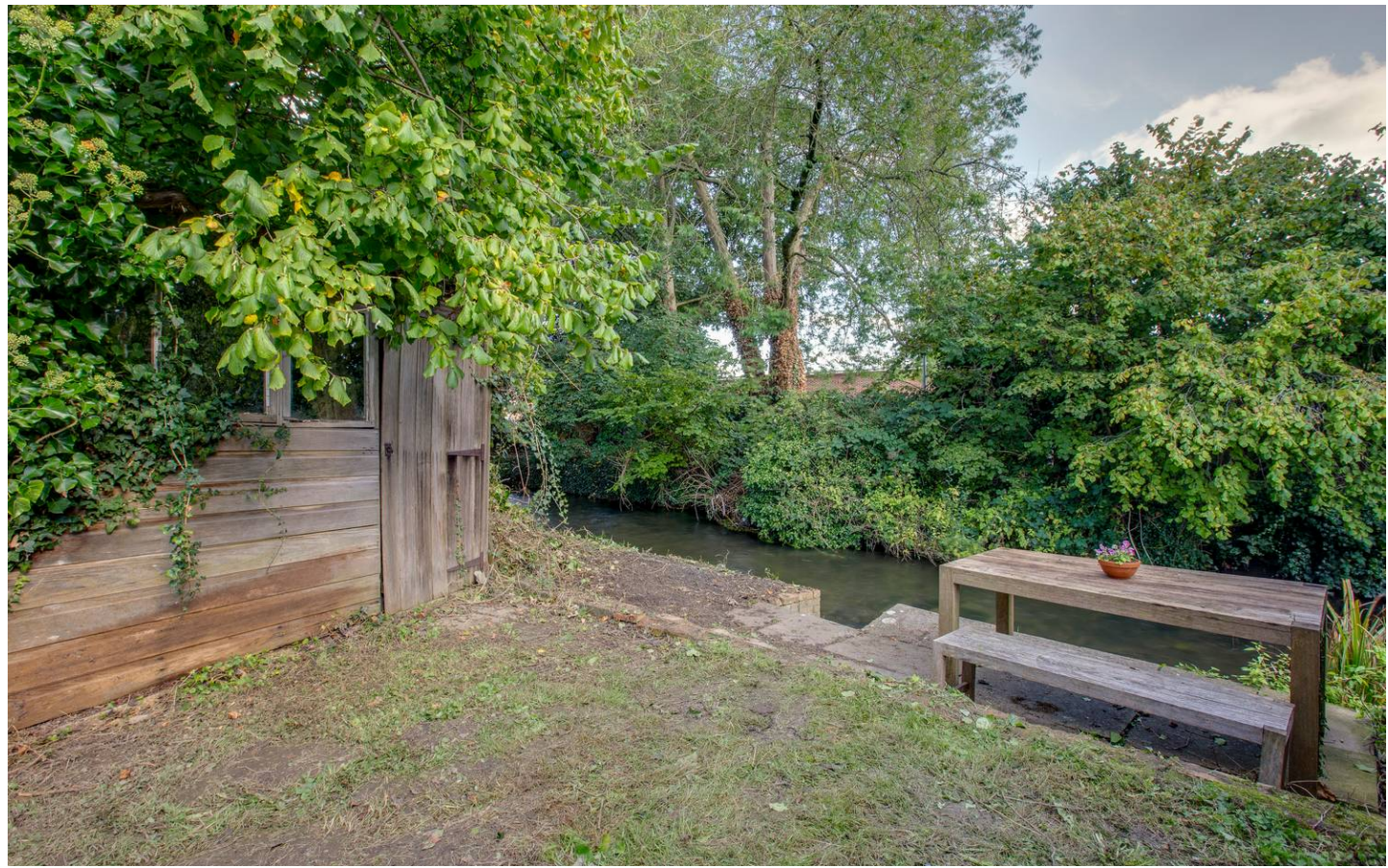
2 Walnut Tree Close

Bourne End, Bourne End

An extended terraced house situated in a sought after location in a quiet cul-de-sac, backing onto the River Wye. The property is now in need of updating and is offered for sale with no upward chain. Entrance hall, Cloakroom, Kitchen, Sitting/Dining room, Study, Three good sized bedrooms, Bathroom, Gas central heating, Double glazing, Front and rear gardens, Garage and parking.

Council Tax band: E

Tenure: Freehold





Entrance hall

Stairs to first floor with under stairs storage cupboard, two radiators

Cloakroom

Low level W.C., wash hand basin with cupboard under, radiator, part tiled walls, window to front

Kitchen

Fitted with a range of eye and base level units incorporating sink unit with mixer tap and drainer, built in Zanussi oven, fitted four ring gas hob with extractor over, space and plumbing for washing machine, plumbing for dishwasher, floor mounted Potterton gas fired central heating boiler, space for fridge/freezer, built in shelved storage cupboard, part tiled walls, window to front

Sitting/Dining room

Three radiators, dimmer switch, double doors to garden

Study

Radiator, door to garden

First floor

Landing

Access to loft space

Bedroom 1

Fitted double wardrobe, radiator, window to front

Bedroom 2

Radiator, window to rear

Bedroom 3

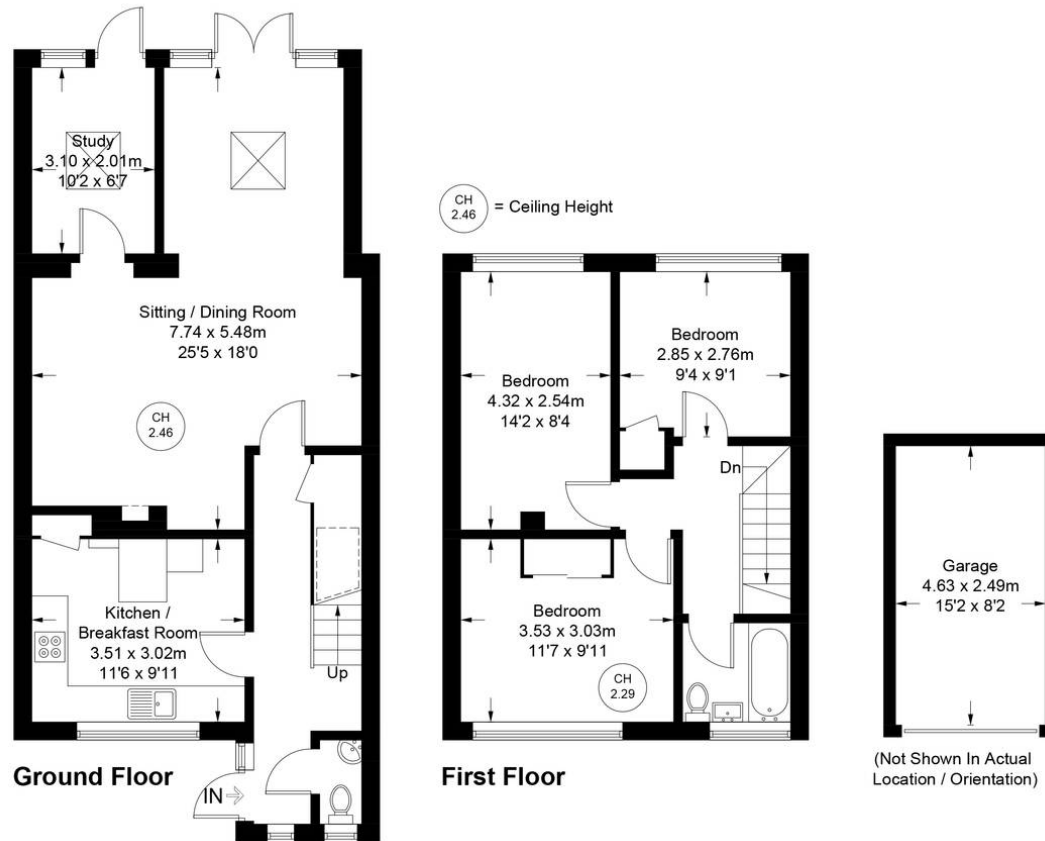
Radiator, airing cupboard housing foam clad hot water cylinder, window to rear

Bathroom

White suite comprising panelled bath, low level W.C., wash hand basin, part tiled walls, radiator, window to front



Approximate Gross Internal Area
Ground Floor = 62.4 sq m / 672 sq ft
First Floor = 41.2 sq m / 443 sq ft
Garage = 11.6 sq m / 125 sq ft
Total = 115.2 sq m / 1240 sq ft



Floor Plan produced for Robertsons by Media Arcade ©.

Illustration for identification purposes only. Window and door openings are approximate. Whilst every attempt is made to assure accuracy in the preparation of this plan, please check all dimensions, shapes and compass bearings before making any decisions reliant upon them.

Robertsons Estate Agents

Swains House, Swains Lane, Flackwell Heath - HP10 9BN

01628 533373

flackwellheath@robertsonsestateagents.co.uk

www.robertsonsestateagents.co.uk/



Robertsons