



Flat B, Kingston Road, Golf Club House, Leatherhead. KT22 0EE

£1,750 pcm

**DAVIES**  
PROPERTY PARTNERS



## Flat B, Golf Club House,

Kingston Road, Leatherhead. KT22 0EE

This two bedroom furnished apartment is set in a beautifully unique location within the Leatherhead golf club. From the apartment you have far reaching views across the tree lined practice area of the course all the way out to the Surrey Hills.

The property has two double bedrooms both with fitted wardrobes and the larger of the two having an en-suite shower room. The living room is semi-open plan with the kitchen.

Allocated parking will be provided for the property and some utilities will be included within the rent.

A further benefit for any tenant will be a social membership to the club allowing access to the on-site members lounge.

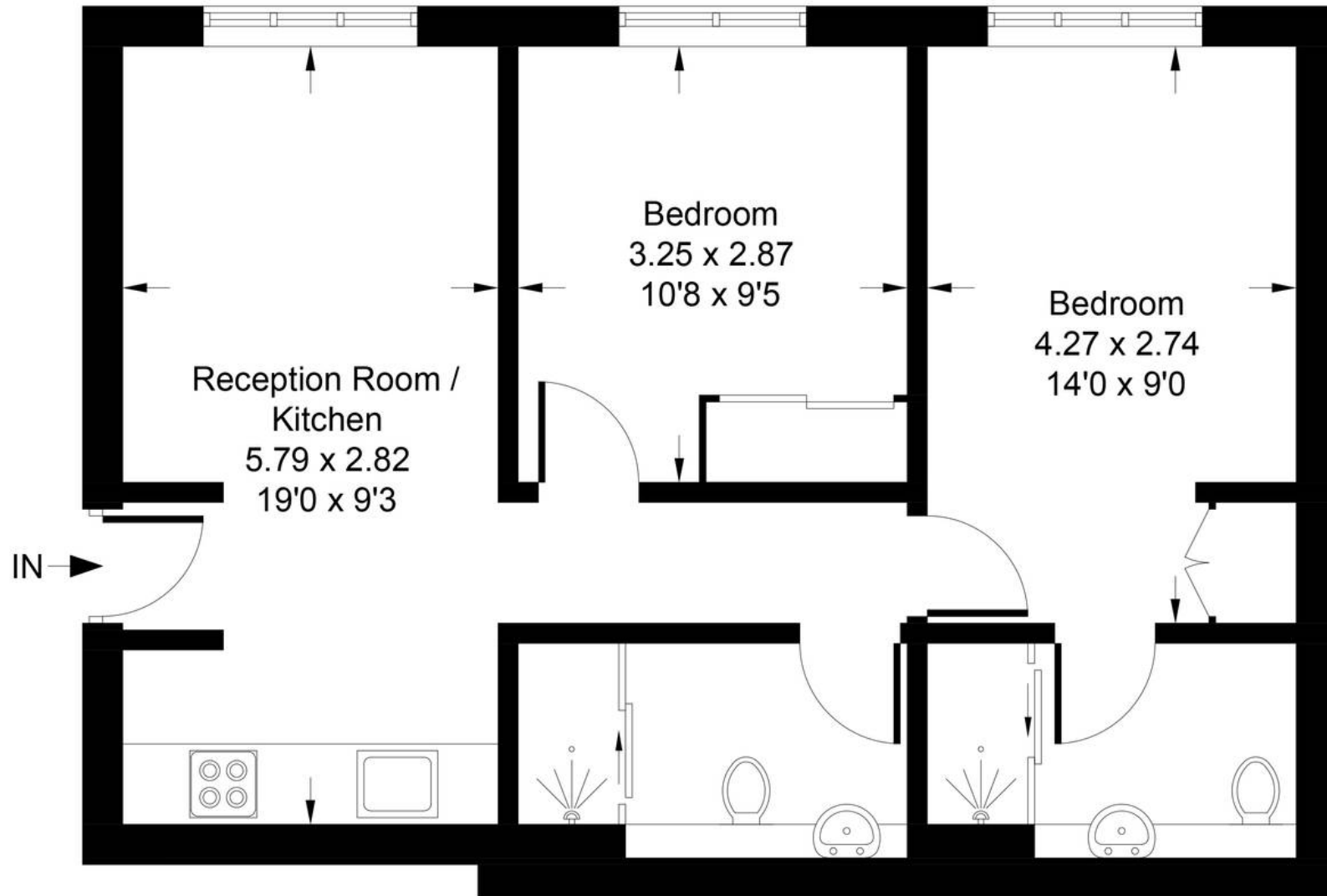
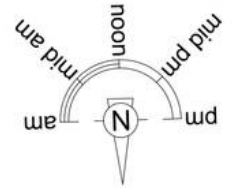
Council Tax Band: C

EPC C



# Kingston Road, Leatherhead, KT22

Approximate Gross Internal Area  
52.3 sq m / 563 sq ft



## First Floor

Floor plan produced in accordance with RICS Property Measurement Standards incorporating International Property Measurement Standards (IPMS2 Residential).  
Produced for DAVIES PROPERTY PARTNERS by IDENTIKA LTD