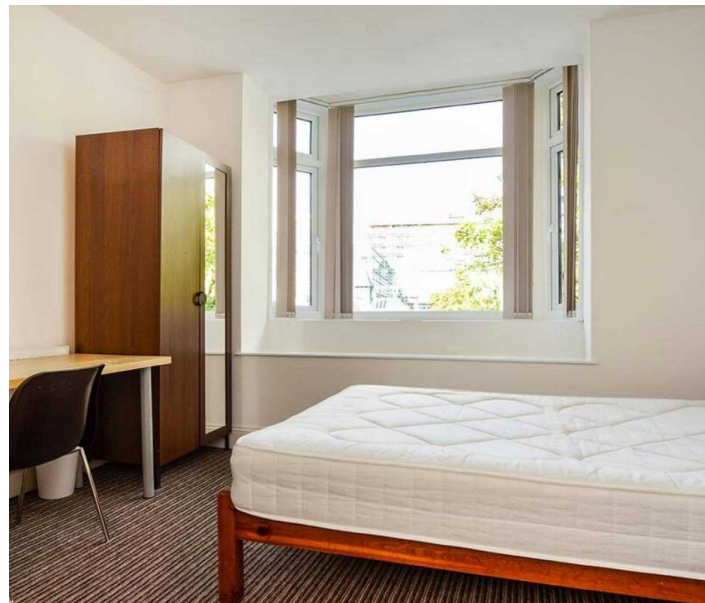




Queen Anne Terrace, Plymouth, PL4 8EG

£750,000 FREEHOLD EPC: D





Queen Anne Terrace

Plymouth, PL4 8EG

A prime investment opportunity in Plymouth, this large Victorian terraced house near University of Plymouth generates circa £80,000 annual rent. Boasting 6 en-suite bedrooms, 3 further bedrooms, communal living areas, and 2 self-contained apartments. Ideal for property investors seeking a lucrative asset.

Council Tax band: E

Tenure: Freehold

- INVESTMENT PROPERTY
- This large house which currently houses students from The University of Plymouth is located directly opposite the main North Hill Campus
- The current rent role is approximately £80,000 per annum.
- This property is offered in excellent decorative order throughout, all things considered.
- This property has been well maintained by the current owners.
- This is a large student house in a prime spot for ease of access to the main campus and would be a fine addition to a property portfolio of an established property owner.
- a large Residents Lounge and Kitchen on the first floor
- A large Victorian Terraced House offering 6 ensuite bedrooms, 3 bedrooms with the use of a shared shower room and 2 self contained one bedroom apartments.

Queen Anne Terrace

Plymouth, PL4 8EG

Welcome to a prime investment opportunity in the heart of Plymouth. Presenting this exceptional property, a large Victorian terraced house that boasts a strategic location directly opposite the renowned University of Plymouth North Hill Campus. This impressive property is currently home to students from the University, generating an approximate annual rent role of £80,000.

Offered in impeccable decorative order and meticulously maintained by the current owners, this sizeable abode showcases spacious living areas and accommodation tailored to student living. The property features 6 en-suite bedrooms, 3 bedrooms with access to a shared shower room, and 2 self-contained one-bedroom apartments, providing versatile living options for residents.

You are greeted by a large residents' lounge and kitchen on the first floor, creating a communal space that fosters a sense of community amongst inhabitants. The open-plan design enhances the flow of the property, ensuring a seamless transition between living spaces.



Queen Anne Terrace

Plymouth, PL4 8EG

This property is a lucrative addition to the portfolio of established property owners, offering not only a high rental income but also the prestige of owning a sought-after property in close proximity to the core campus of a prestigious university.

With its prime location and well-designed layout, this property is a sound investment opportunity that promises both financial stability and potential growth. Whether you are an experienced investor seeking to expand your property portfolio or a newcomer looking to enter the market, this property presents a compelling opportunity to secure a valuable asset.

Don't miss out on this exceptional investment chance. Contact us today to learn more about this property.

Council Tax band: E

Tenure: Freehold





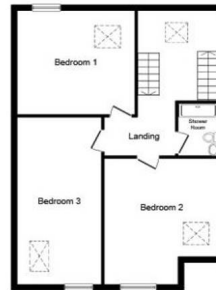
Ground Floor



First Floor



Second Floor



Top Floor

Total floor area 428.0 sq. m. (4,607 sq. ft.) approx

This floor plan is for illustrative purposes only. It is not drawn to scale. Any measurements, floor areas (including any total floor area), openings and orientation are approximate. No details are guaranteed, they cannot be relied upon for any purpose and they do not form part of any agreement. No liability is taken for any error, omission or misstatement. A party must rely upon its own inspection(s). Powered by www.focalagent.com



Atwell Martin

Atwell Martin, 65 Southside Street - PL1 2LA

01752 202121

plymouthsales@atwell-martin.co.uk

plymouth.atwellmartin.co.uk/

Atwell Martin Plymouth endeavour to ensure the accuracy of property details produced and displayed. Please note that we have not tested any apparatus, equipment, fixtures, fittings or services and so cannot verify that they are connected, in working order or fit for purpose. It is imperative that the buyer of any property makes such checks, prior to purchase so as to satisfy themselves of the properties suitability for their purchase. .