



## 2 Copperfield, Billericay - CM11 2SB

£425,000 Freehold

**\*\* NO ONWARD CHAIN \*\***This 3 bedroom semi-detached is an ideal family home set in a quiet, established cul-de-sac within walking distance of good local schools, well serviced local shops and transport links. Great space inside with potential for reconfiguration and modernisation if required.

Council Tax band: D ~ EPC Energy Efficiency Rating E



**tyler estates**

01277 626181

[www.tylerestates.co.uk](http://www.tylerestates.co.uk)



**Entrance hall**

**Lounge**

14' 9" x 11' 11" (4.49m x 3.63m)

**Dining room**

8' 8" x 7' 11" (2.63m x 2.41m)

**Kitchen**

10' 11" x 7' 11" (3.33m x 2.41m)

**Bedroom One**

13' 7" x 9' 10" (4.15m x 3.00m)

**Bedroom Two**

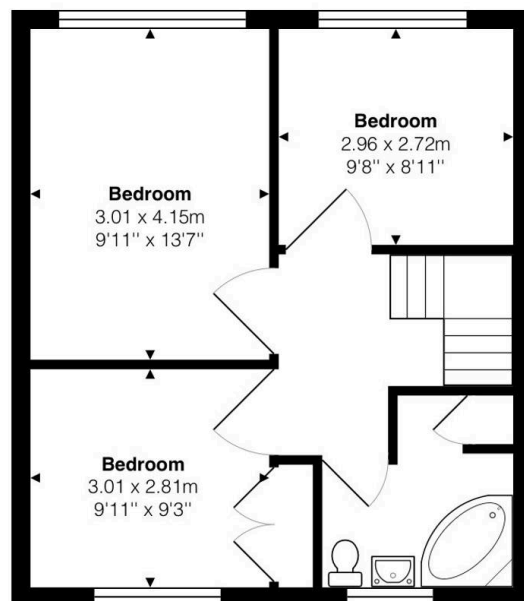
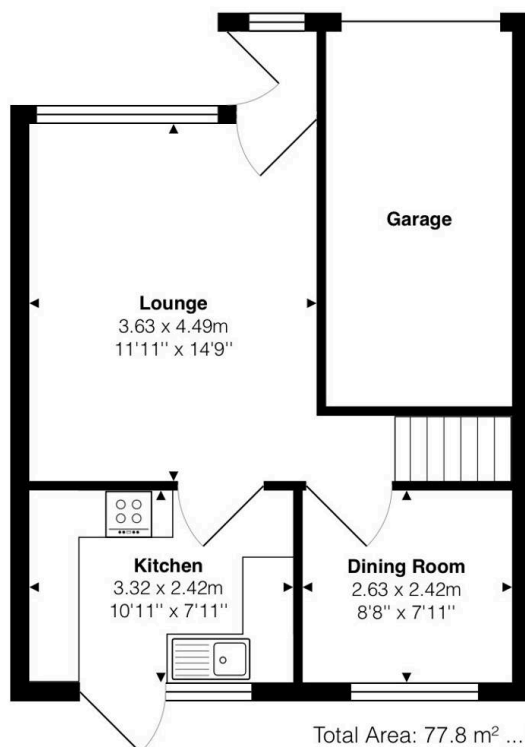
9' 10" x 9' 2" (3.00m x 2.80m)

**Bedroom Three**

9' 9" x 9' 0" (2.96m x 2.75m)

**Family bathroom**

8' 0" x 7' 11" (2.44m x 2.41m)



Total Area: 77.8 m<sup>2</sup> ... 838 ft<sup>2</sup> (excluding garage)

Measurements are approximate for illustrative purposes only and may have been taken from the widest area

Floorplan Copyright The Estate Agents Photographer  
www.theestateagentsphotographer.co.uk