



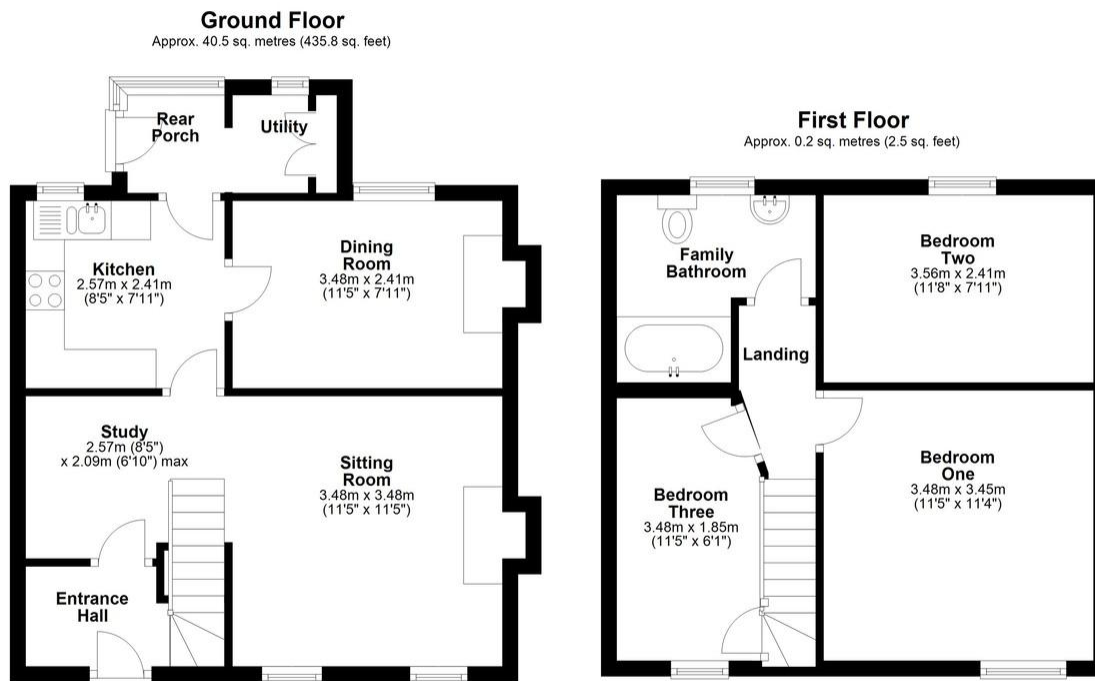
48 HYDE ROAD, STRATTON, SWINDON, SN2 7SB

OFFERS IN EXCESS OF £280,000



48 Hyde Road, Stratton, Swindon, SN2 7SB

Offered For Sale is this early Victorian Character Cottage with an extremely large garden and off road parking. The accommodation is packed with original features and comprises; Entrance Hall, Study Area, Sitting Room with open fire, Kitchen, Separate Dining Room with Wood Burning Stove, Rear Porch and Utility. Upstairs are Three Good Sized Bedrooms and a Family Bathroom. The property is mostly uPVC double Glazed and heating is by means of gas fired radiators. Outside can be found large rear gardens and gravelled driveway to the front for up to three vehicles. There is rear access via an alley between 48 and its neighbour and also to the rear garden from Willowbrook.



Total area: approx. 40.7 sq. metres (438.3 sq. feet)