



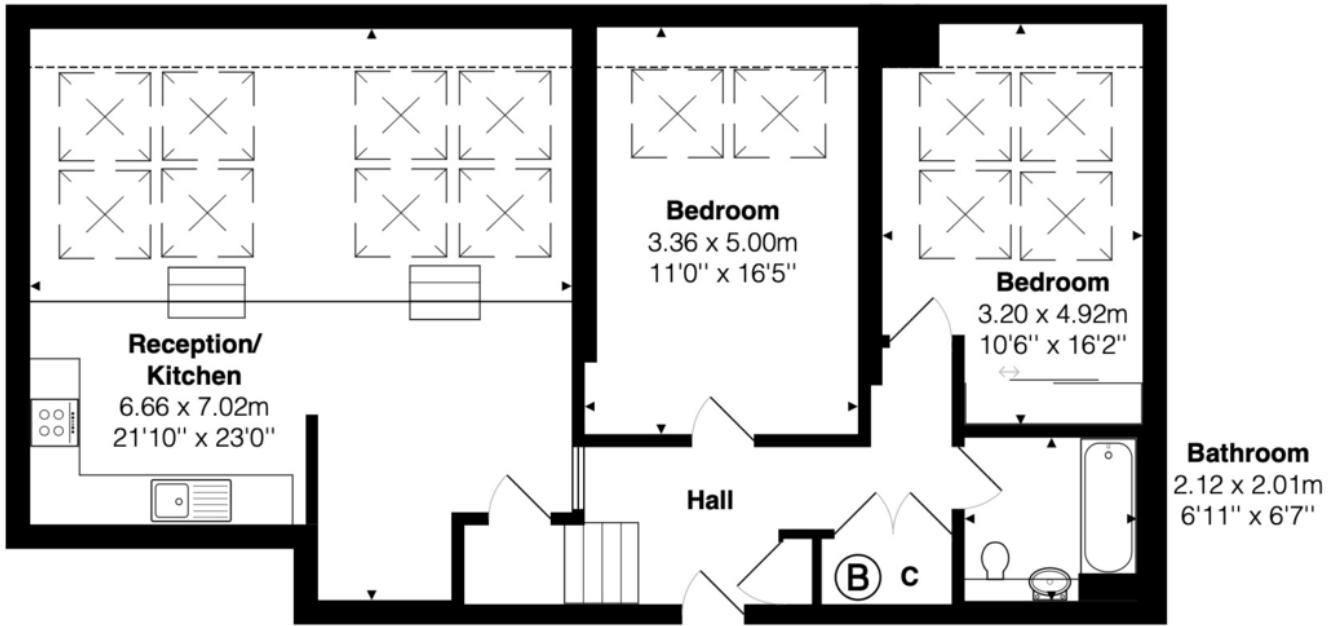
MILE



Chartwell Court, London NW2 £539,950 Share of Freehold

Welcome to Chartwell Court. This newly refurbished, spacious flat spans 975 sq. ft., offering two generously sized double bedrooms, a sleek, contemporary bathroom, and a stunning open-plan living area. Nestled within the loft spaces of this charming, historic building, it exudes character and uniqueness. With only 10 penthouse apartments in the building, their rarity helps them retain value and appeal to buyers seeking something truly special. Additional features include off-street parking, secure gated entry, and proximity to the beautiful Gladstone Park. A visit is essential to appreciate all this property has to offer! Chartwell Court sits majestically atop Dollis Hill, offering breathtaking panoramic views to the south across London. Nearby amenities are excellent, with Gladstone Park leading the way—featuring tennis courts, a Victorian garden, and football and rugby pitches. It's also the perfect spot for leisurely walks or enjoying the sunshine. Dollis Hill Station is just a 15-minute walk away, connecting you to the Jubilee Line, with Central London reachable in 20 minutes and the City in 35. This is an exceptional property in an equally exceptional location, and it's a must-see!

- Penthouse
- Gated development
- Share of Freehold
- 975 sq ft
- Chain free
- Off street parking
- Newly refurbished
- Two double bedrooms
- Bright and airy
- Close to transport



Total Area: 90.5 m² ... 975 ft²

All measurements are approximate and for display purposes only

MONEY LAUNDERING REGULATIONS 2003: Intending purchasers will be asked to produce identification documentation at a later stage and we would ask for your co-operation in order that there will be no delay in agreeing the sale.

General: While we endeavour to make our sales particulars fair, accurate and reliable, they are only a general guide to the property and, accordingly, if there is any point which is of particular importance to you, please contact the office and we will be pleased to check the position for you, especially if you are contemplating travelling some distance to view the property.

Measurements: These approximate room sizes are only intended as general guidance. You must verify the dimensions carefully before ordering carpets or any built-in furniture.

Services: Please note we have not tested the services or any of the equipment or appliances in this property, accordingly we strongly advise prospective buyers to commission their own survey or service reports before finalising their offer to purchase.