

FOR SALE



Mount Road, Lower Parkstone
£234,999


MARTIN&CO

Mount Road, Lower Parkstone

£234,999

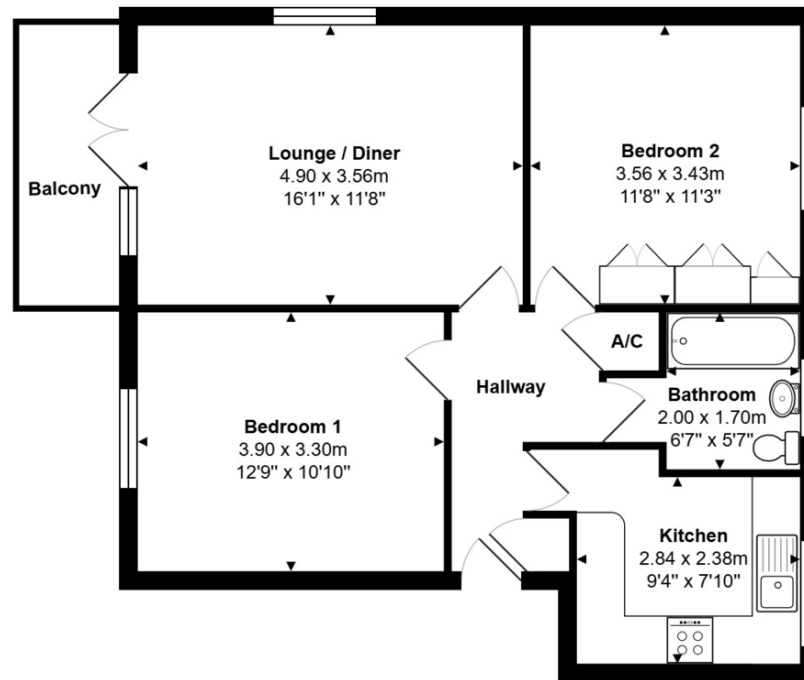
- TWO DOUBLE BEDROOMS
- SOUTH FACING BALCONY
- GARAGE & PARKING
- NO FORWARD CHAIN
- MODERN APARTMENT
- COUNCIL TAX BAND C £1909 PA

Purpose built second floor flat within walking distance of Ashley Cross, offering two double bedrooms one with fitted wardrobes, South facing balcony, & garage with no forward chain. Modern kitchen and bathroom, bright and airy flat with distant views over attractive communal grounds.





Energy Efficiency Rating			
Score	Energy rating	Current	Potential
92+	A		
81-91	B		
69-80	C	74 C	78 C
55-68	D		
39-54	E		
21-38	F		
1-20	G		



Total Area: 62.0 m² ... 668 ft² (excluding balcony)

All measurements are approximate and for display purposes only

Martin & Co Poole

109 Commercial Road • • Poole • BH14 0JD
T: 01202 710171 • E: poole@martinco.com

01202 710171

<http://www.poole.martinco.com>



Accuracy: References to the Tenure of a Property are based on information supplied by the Seller. The Agent has not had sight of the title documents. A Buyer is advised to obtain verification from their Solicitor. Items shown in photographs including but not limited to carpets, fixtures and fittings are not included unless specifically mentioned within the sales particulars. They may however be available by separate negotiation. Buyers must check the availability of any property and make an appointment to view before embarking on any journey to see a property. No person in the employment of the agent has any authority to make any representation about the property, and accordingly any information given is entirely without responsibility on the part of the agents, sellers(s) or lessors(s). Any property particulars are not an offer or contract, nor form part of one. **Sonic / Laser Tape:** Measurements taken using a sonic / laser tape measure may be subject to a small margin of error. **All Measurements:** All Measurements are Approximate. **Services Not tested:** The Agent has not tested any apparatus, equipment, fixtures and fittings or services and so cannot verify that they are in working order or fit for the purpose. A Buyer is advised to obtain verification from their Solicitor or Surveyor.