



35 Burlington Road

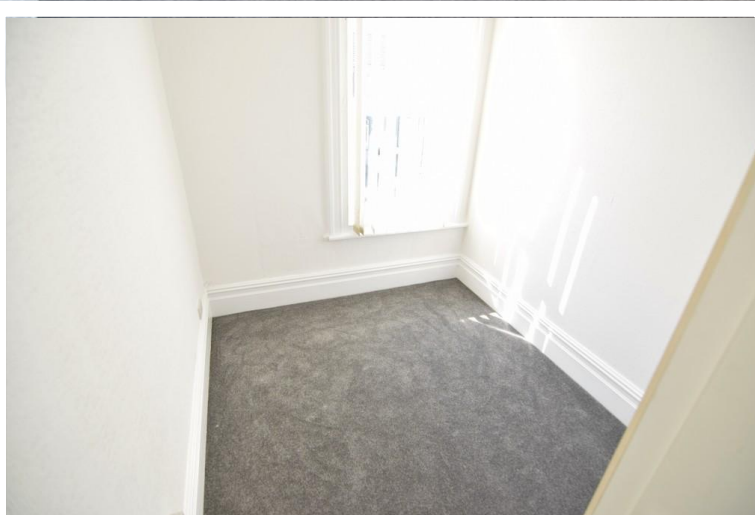
Blackpool, FY4 1JS

- **ONE BEDROOM FIRST FLOOR FLAT**
- **LOUNGE OPEN TO KITCHEN**
- **MOVE IN COSTS £793.33**
- **ELECTRIC HEATING / DOUBLE GLAZING**

£85 pw

EPC Rating '39'





Property Description

Cosy one bedroom first floor flat, situated in a popular location close to transport links, shops and other local amenities. New carpets have been fitted and the property has recently been decorated.

Accommodation comprising hallway, lounge open to kitchen, one bedroom and shower room. The property benefits from electric heating and double glazing.

Over 35's only.

HALLWAY
Exterior door.

LOUNGE
13' 3" x 9' 2" (4.06m x 2.80m) Electric fire. Meter cupboard. Coved ceiling. Electric heater

KITCHEN
12' 5" x 3' 6" (3.79m x 1.09m) Fitted wall and base units with complementary work surfaces. Stainless

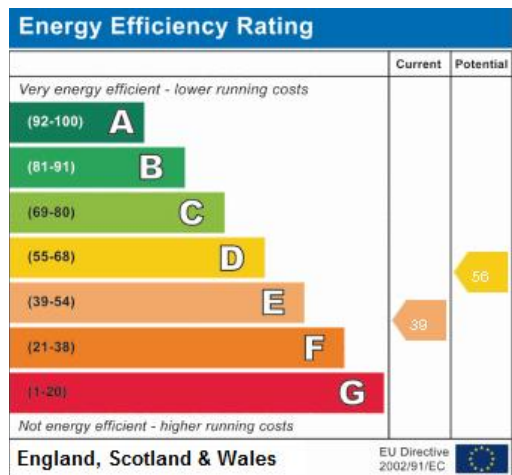
steel sink unit. built in electric oven and hob. Double glazed bay window to the front.

BEDROOM

10' 4" x 7' 5" (3.15m x 2.28m) Double glazed window to the front. Storage cupboards. Electric heater.

SHOWER ROOM

Three piece suite comprising shower cubicle, low flush wc and pedestal wash hand basin.



21 Counce Street
Blackpool
Lancashire
FY1 3LA

www.moveholmes.co.uk
01253 928200
enquiries@moveholmes.co.uk

Agents Note: Whilst every care has been taken to prepare these sales particulars, they are for guidance purposes only. All measurements are approximate and are for general guidance purposes only and whilst every care has been taken to ensure their accuracy, they should not be relied upon and potential buyers are advised to recheck the measurements