



Queensfield, Fairford – GL7 4JR

Gloucestershire

Guide Price **£280,000**

mcfarlane
property.com

Queensfield

Gloucestershire

- Three Bedroom Family Home
- In Need of MODERNISATION Throughout
- NO CHAIN
- Three WELL PROPORTIONED Bedrooms
- Living Room 6M x 3M

Spacious 3-bed family home in sought-after Fairford location. Requires updating but offers great potential. Close to amenities & schools. Enclosed garden, off-road parking. No chain. Call McFarlane Sales Cricklade 01793 751 044.



Queensfield

Gloucestershire

Fairford is a bustling market town in the sought after county of Gloucestershire. This historic town lies in the Cotswold hills and the River Coln, 6 miles East of Cirencester, 4 miles West of Lechlade and 9 miles North of Swindon. Fairford is well known for its RAF Base and Air Shows.

Council Tax band: B

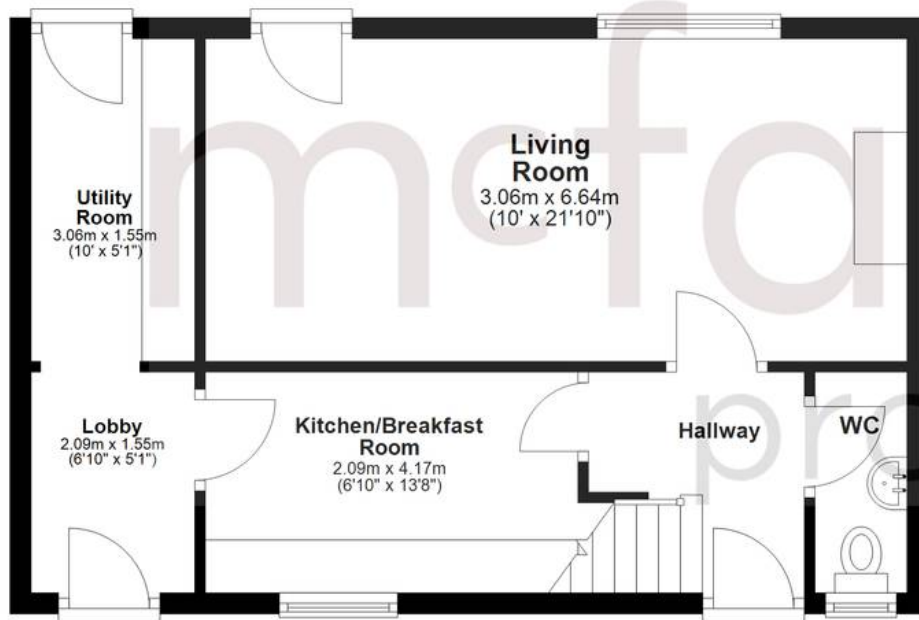
Tenure: Freehold

mcfarlane
property.com



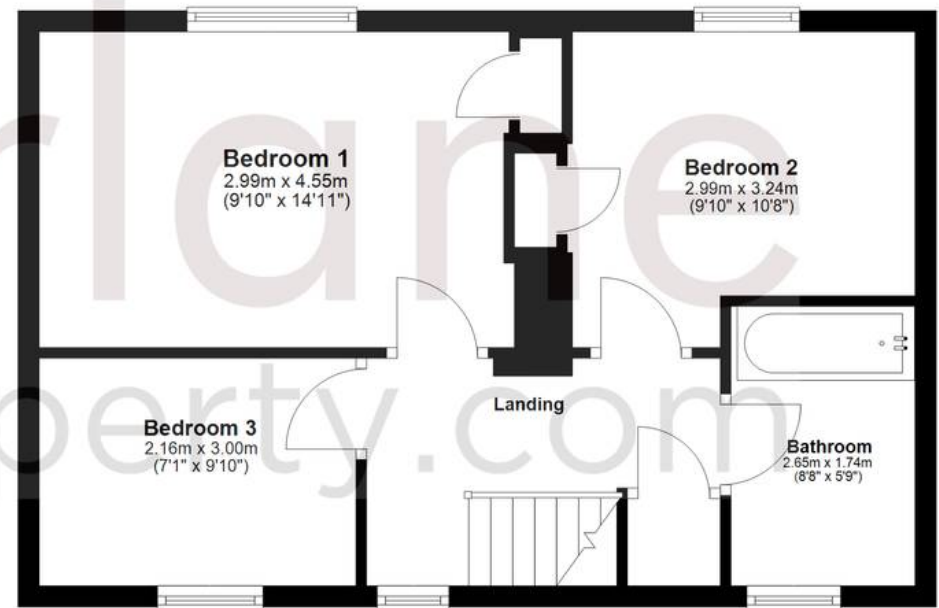
Ground Floor

Approx. 43.5 sq. metres (468.3 sq. feet)



First Floor

Approx. 43.5 sq. metres (467.9 sq. feet)



Total area: approx. 87.0 sq. metres (936.3 sq. feet)

Agents Note: Whilst every care has been taken to prepare these sales particulars, they are for guidance purposes only. All measurements are approximate and for general guidance purposes only and whilst every care has been taken to ensure their accuracy, they should not be relied upon and potential buyers are advised to recheck the measurements.