



Charles Terrace, Balloch
Offer Over £79,000
One bedroom ground floor flat

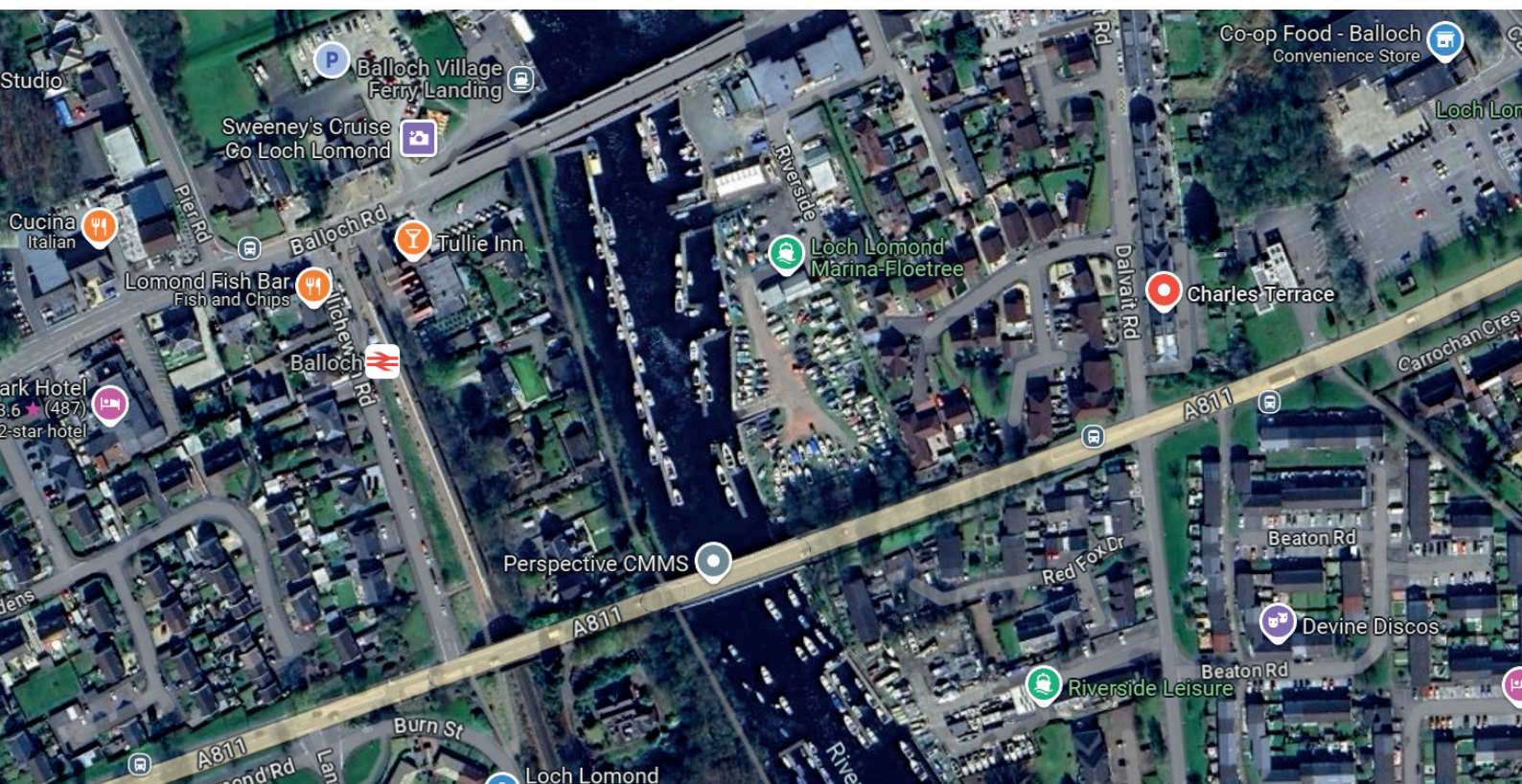


This one bedroom ground floor flat is situated in one of the most sought after locations in the heart of Balloch and minutes walk from all the local amenities Balloch has to offer including shopping, bus and train services. Loch Lomond Shores, Balloch Castle country park and the views of Loch Lomond all on your doorstep.

The property has gas central heating and double glazing. Timber entrance door gives access to the vestibule and entrance hallway, large recess cupboard which also has plumbing for automatic washing machine within. A good size lounge with open plan kitchen has window facing to the front of the property, the kitchen has a range of base and wall mounted storage units in white, inset electric hob with oven below and extractor above. There is a good size bedroom with window facing to the front, ample floor space for free standing bedroom furniture.

Off the bedroom there is an ensuite shower which consists of a walk in shower cubicle with mains shower, fully tiled on all walls, wall radiator. Off the hallway there is a cloaks which consists of a white wc and wash hand basin within vanity unit, chrome radiator, window faces to the rear.

- Energy Rating 'D'
- Lounge/Kitchen 14' x 12'
- Bedroom 12'4"x8"6"





Contact us

GPM Estate Agents

93 Main Street,
Alexandria,
G83 0NX

01389 721200

www.gpmproperty.com
enquiries@gpmproperty.com