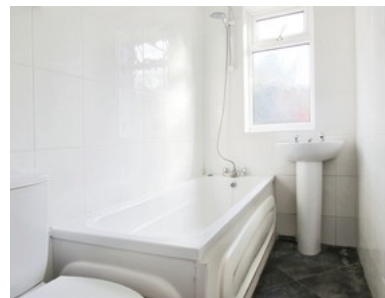


# Trinity Lane, Beverley

## INVITING OFFERS BETWEEN £145,000- £155,000



- Mid Terrace Home With Potential
- Two Bedrooms With Fitted Wardrobes
- Open Plan Lounge And Dining Area
- Kitchen And Ground Floor Bathroom
- Small Courtyard Garden
- No Onward Chain
- Freehold
- Council Tax Band B
- Epc Rating D



Bedroom 2 Bathroom 1 Reception 1

Guide Price

**£145,000**