



Clement House Rainsborough Avenue, London

London

£375,000

OLIVER *OJ* JAQUES
EST. 1986

Clement House Rainsborough Avenue, London

A spacious duplex apartment offered to the market in reasonable decorative order, which spans over 800sqft of internal accommodation.

Council Tax band: B

Tenure: Leasehold

EPC Energy Efficiency Rating: C

EPC Environmental Impact Rating: C

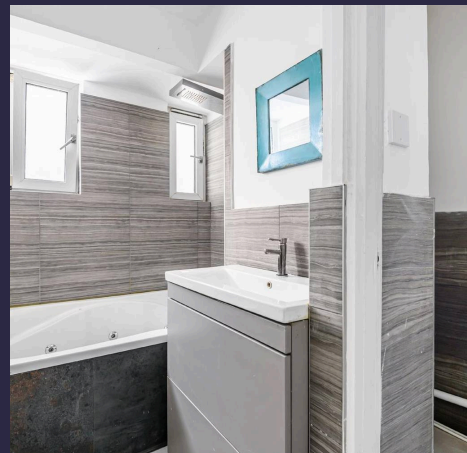
- Third Floor Apartment
- Duplex Apartment
- Three Double Bedrooms
- South Facing Balcony
- Secure Development
- Serviced Lifts

Tenure - Leasehold

Lease Expiry - 15/10/2116

Ground Rent - £50 per year

Service Charge - £800 per year



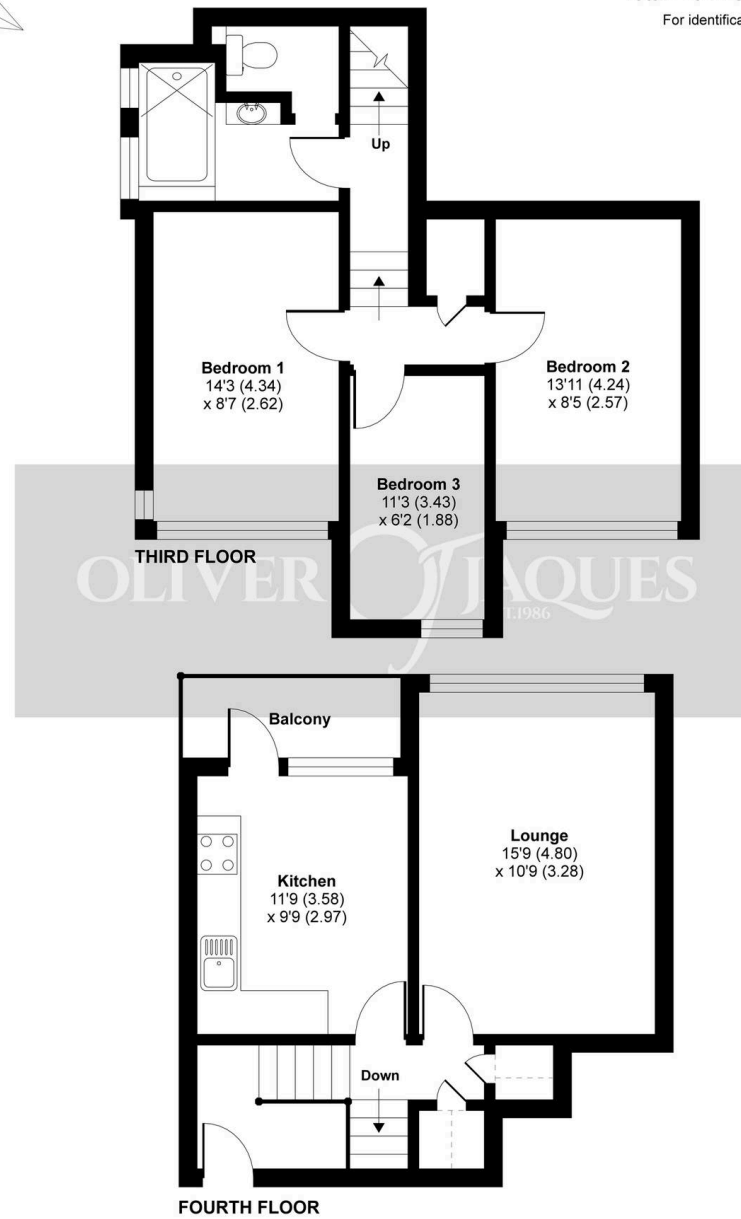
Rainsborough Avenue, London, SE8

Approximate Area = 830 sq ft / 77.1 sq m

Limited Use Area(s) = 14 sq ft / 1.3 sq m

Total = 844 sq ft / 78.4 sq m

For identification only - Not to scale



Floor plan produced in accordance with RICS Property Measurement Standards incorporating International Property Measurement Standards (IPMS2 Residential). ©nlchecon 2021. Produced for Oliver Jaques. REF: 791213



Oliver Jaques

Oliver Jaques, 229-231 Lower Road - SE16 2LW

02072315050 • southeast@o-j.co.uk • o-j.co.uk/

Every care has been taken with the preparation of this brochure but it is for general guidance and complete accuracy can't be guaranteed. Prospective purchasers should seek clarification from their solicitor. The mention of any appliances fixtures or fittings does not imply they are in working order.