

1 Molten Court Moulding Lane, London

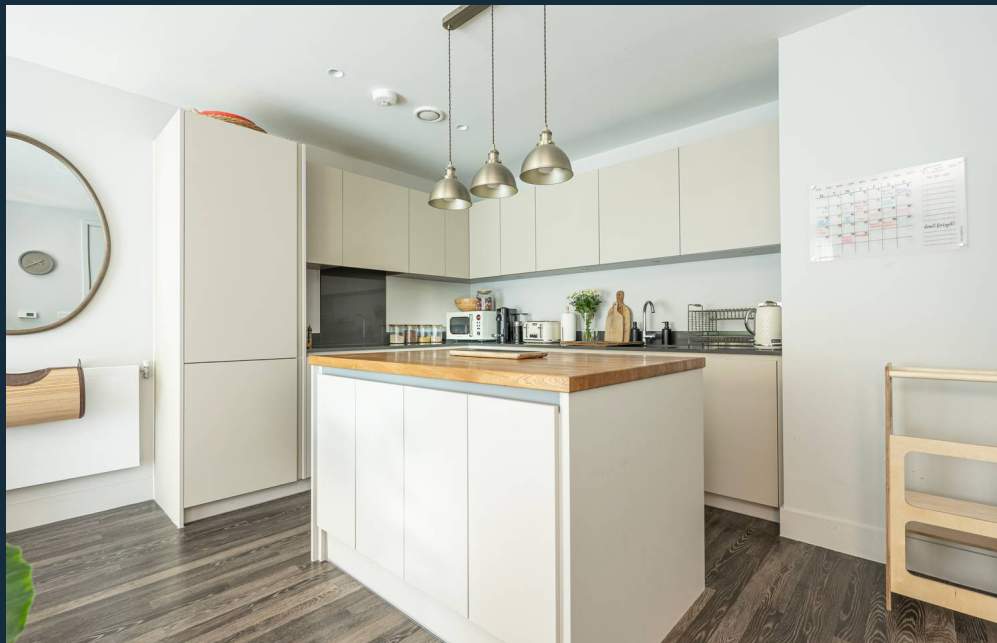
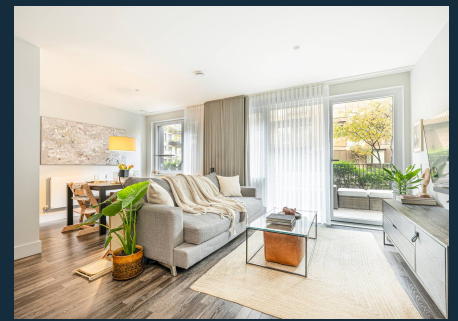
£575,000 Leasehold



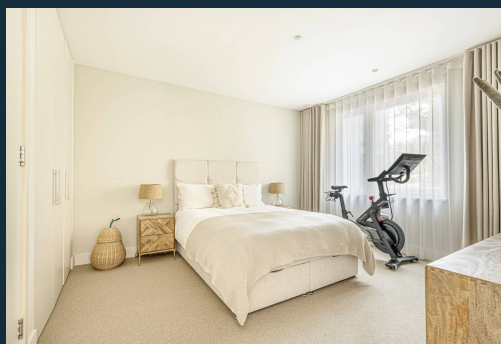
haboodle

Discover the epitome of luxury living with this stunning two-bedroom apartment on the ground floor of this highly desirable modern development built circa 2020. Ready to move in offered chain free, making it the perfect opportunity for anyone seeking their dream home. Boasting spacious and versatile living areas, this exceptional property caters effortlessly for those looking to upsize and downsize.

From the moment you step inside, you will be struck by the expansive proportions and natural light that floods throughout. The apartment is beautifully appointed with high-end wood effect luxury flooring, providing a seamless flow throughout the bright, spacious hallway. There is a contemporary, modern, fitted kitchen, an inviting dining area and an open-plan living room, perfect for entertaining. This apartment combines convenience and style with two large double bedrooms, one boasting a modern ensuite with a walk-in shower and a separate sleek, modern bathroom. A further standout feature is the larger-than-average private balcony, offering a perfect retreat from city life.



- Spacious Living Space
- High End Finishings
- Large Private Balcony
- Immaculate Throughout
- En-suite Bathroom
- Ample Storage
- Fully Fitted Modern Kitchen
- Excellent Transport Links
- Close to Local Amenities
- Long Lease
- Chain Free
- Excellent EPC Rating



Molten Court, Moulding Lane, London, SE14

Approximate Gross Internal Area = 85.0 sq m / 907 sq ft

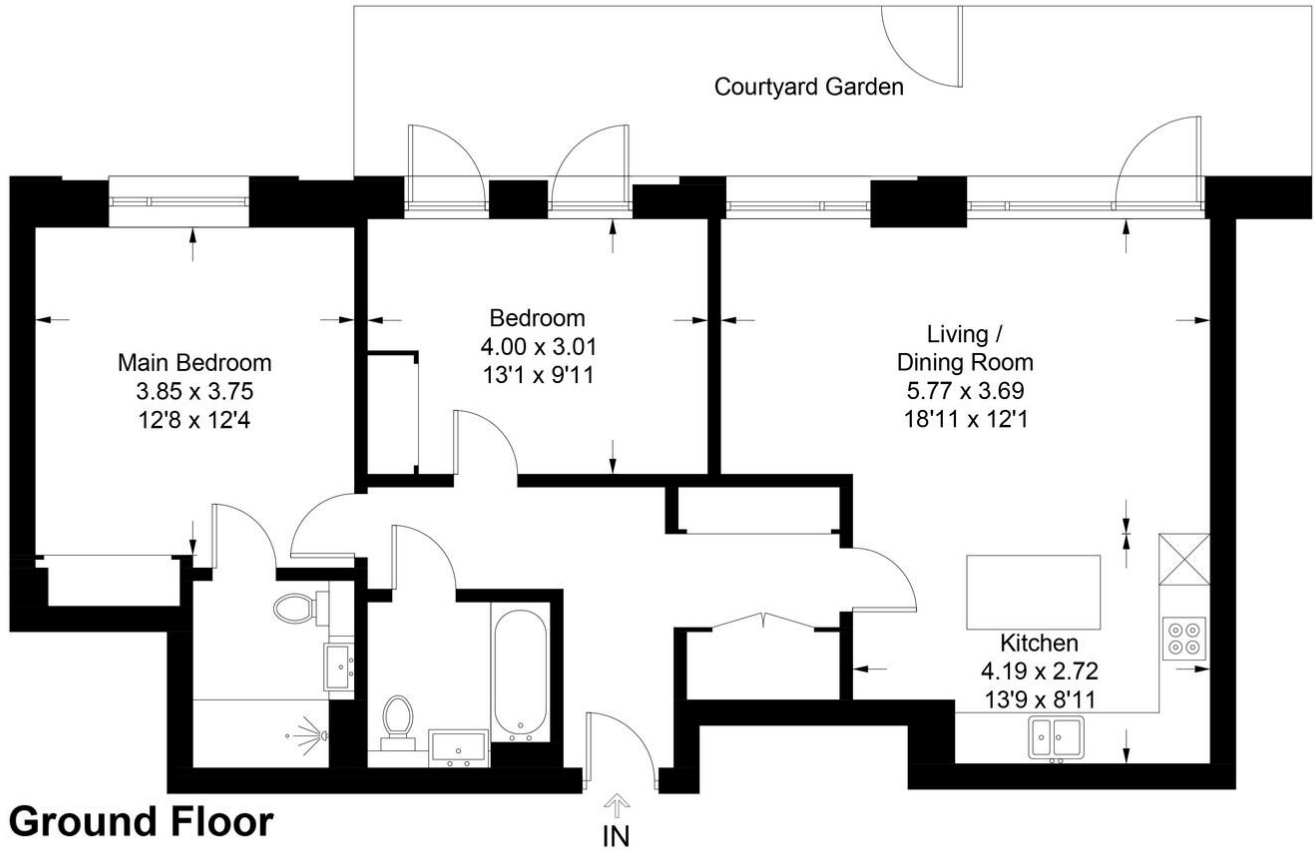


Illustration for identification purposes only, measurements are approximate, not to scale. Produced by Haboodle Estate Agents (ID1136347)



haboodle