



Lyminge Close

Sidcup
DA14 6RE

Leasehold

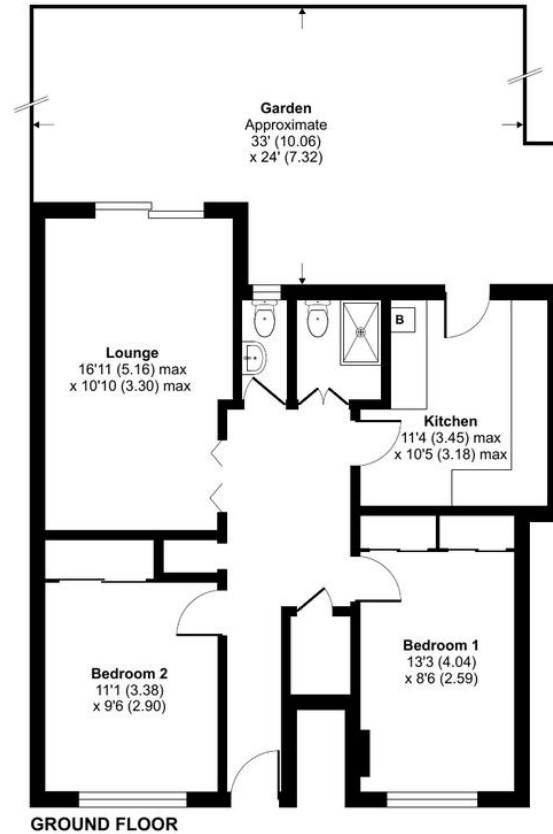
Larger than average 2 bedroom ground floor maisonette
Garage en bloc
Direct access to private rear garden
Long lease
Chain free
Easy access to local shops, parks and transport links

Local Authority Bexley London Borough
Council
Council Tax Band C
EPC Rating C

Lease 967 years remaining
Service Charge none
Ground Rent £20 per annum

Lylinge Close, Sidcup, DA14

Approximate Area = 744 sq ft / 69.1 sq m
For identification only - Not to scale



 Floor plan produced in accordance with RICS Property Measurement 2nd Edition, Incorporating International Property Measurement Standards (IPMS2 Residential). © nchemcom 2024. Produced for Drewery. REF: 1202199

Drewery Property Consultants
128 Station Road
Sidcup
Kent
DA15 7AF

Contact
020 8269 6605
info@drewery.co.uk
www.drewery.co.uk

Agents Note: Whilst every care has been taken to prepare these particulars, they are for guidance purposes only. All measurements are approximate and are for general guidance purposes only and whilst every care has been taken to ensure their accuracy, they should not be relied upon and potential buyers/tenants are advised to recheck the measurements.