



## 52 Bellhouse Lane | Staveley | S43 3UA

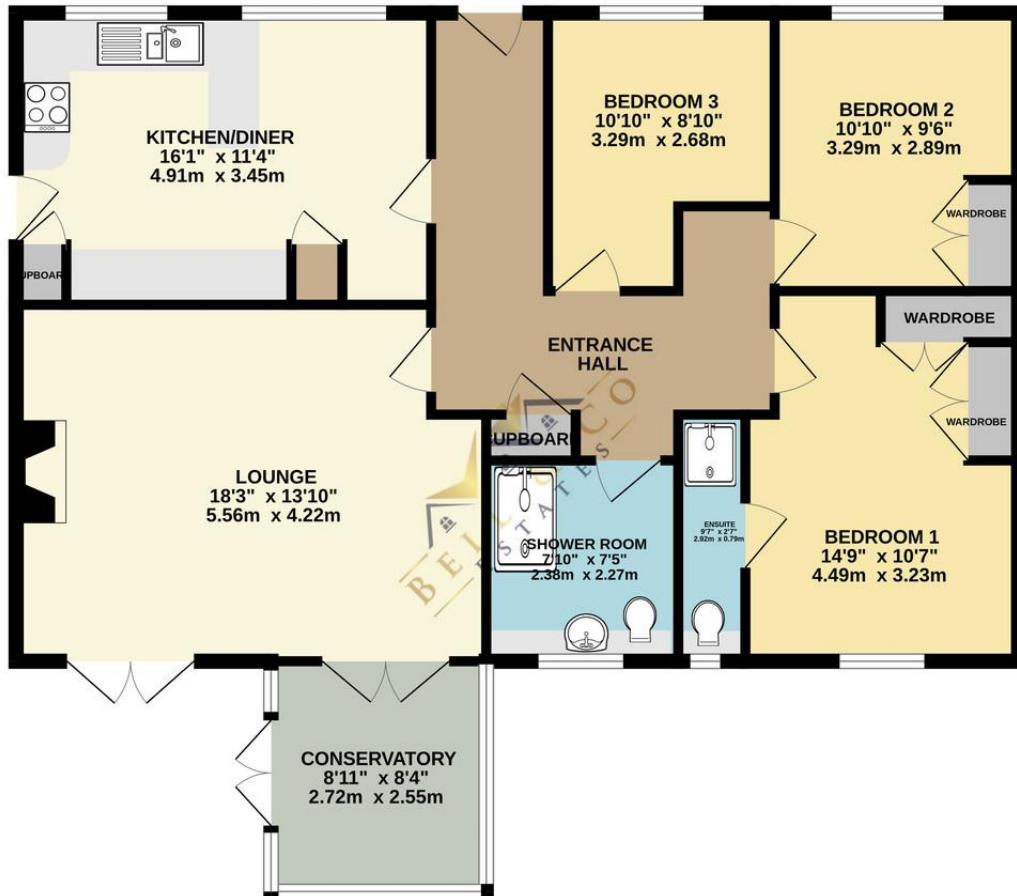
Guide Price £290,000 to £300,000

Bell & Co Estates are thrilled to offer this spacious Three-Bedroom Detached Bungalow, located in the heart of Staveley offered with no Vendor Chain. The interior features, kitchen/dining area, a front-facing bright and airy kitchen equipped with integrated appliances, ample cupboard and worktop space, and a cozy dining area. An open hallway with a generous storage cupboard leads to the living areas. A rear-facing large lounge featuring a gas fire and surround. French doors provide direct access to the rear patio, ideal for indoor-outdoor living. A spacious conservatory at the rear of the property offers additional living space and opens up into the rear garden. The master suite boasts fitted wardrobes and a private en-suite, complete with a shower, wash basin, and WC. Both double bedrooms, with one featuring fitted wardrobes. A modern bathroom with a walk-in shower cubicle, wash basin, and WC. The property benefits from a gated driveway with a grassed area, ensuring security and privacy. A side gate allows access to the rear of the property and the detached garage offers additional storage or parking space.

- No Chain!
- Large Three Bedroom Detached Bungalow
- Spacious Throughout
- Front Facing Kitchen, Diner
- Lounge With French Doors
- Conservatory
- Detached Garage
- Gated Driveway



GROUND FLOOR  
1047 sq.ft. (97.3 sq.m.) approx.



## Contact Details

79 Wales Road  
Kiveton Park  
Sheffield  
South Yorkshire  
S26 6RA

www.bellcoestates.com  
info@bellcoestates.com  
03333 580590

52, Bellhouse Lane  
Staveley  
CHESTERFIELD  
S43 3UA

Energy rating

**D**

Valid until  
**21 November 2025**

Certificate number  
**9706-2861-7998-9895-2711**

**Property type** Detached bungalow

**Total floor area** 96 square metres

Agents Note: Whilst every care has been taken to prepare these sales particulars, they are for guidance purposes only. All measurements are approximate and are for general guidance purposes only and whilst every care has been taken to ensure their accuracy, they should not be relied upon and potential buyers are advised to recheck the measurements