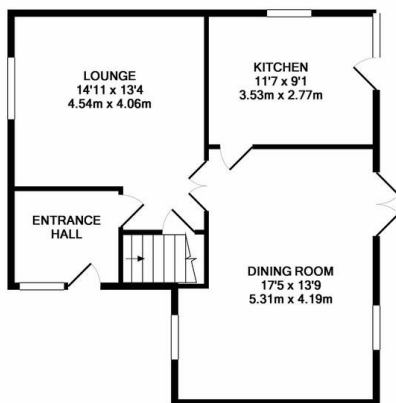


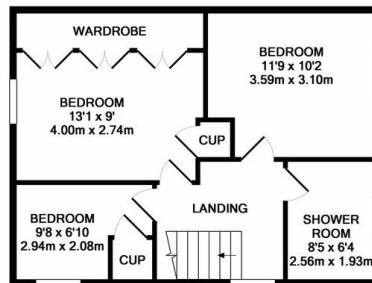
## FOR SALE

3 Bed Detached House in Gillam Butts, Countesthorpe, LE8 5PX  
Offers Over £350,000

Immaculate and well proportioned detached family home occupying a generous corner plot. The accommodation comprises entrance hall, lounge, extended dining room, kitchen, three bedrooms, bathroom, front and rear gardens, off road parking and detached garage. This property is ideally located close to the centre of the village with shops, local school and bus route all a short walk away.



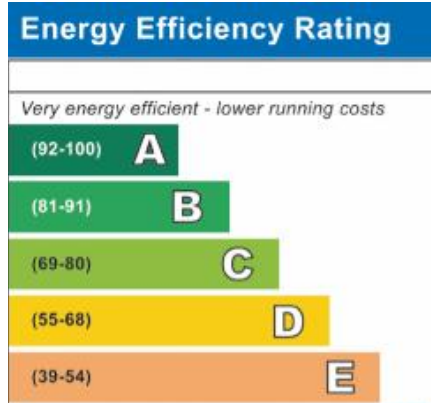
GROUND FLOOR  
APPROX. FLOOR  
AREA 572 SQ.FT.  
(53.1 SQ.M.)



1ST FLOOR  
APPROX. FLOOR  
AREA 462 SQ.FT.  
(43.0 SQ.M.)

**GILLAM BUTTS**  
TOTAL APPROX. FLOOR AREA 1034 SQ.FT. (96.1 SQ.M.)

Whilst every attempt has been made to ensure the accuracy of the floor plan contained here, measurements of doors, windows, rooms and any other items are approximate and no responsibility is taken for any error, omission, or mis-statement. This plan is for illustrative purposes only and should be used as such by any prospective purchaser. The services, systems and appliances shown have not been tested and no guarantee as to their operability or efficiency can be given.  
Made with Metropix ©2018



- Corner Plot
- Detached House
- Well Presented Throughout
- Three Bedrooms
- Detached Garage
- Ground Floor Extension
- Popular Location
- Good Size Garden

**Agents Note:** Whilst every care has been taken to prepare these sales particulars, they are for guidance purposes only. All measurements are approximate and for general guidance purposes only and whilst every care has been taken to ensure their accuracy, they should not be relied upon and potential buyers are advised to recheck the measurements.

