



Pleasance Road North, Lydd On Sea

£395,000

Romney Marsh



23 Pleasance Road North

Lydd On Sea, Romney Marsh

Immaculately presented three bed semi-detached bungalow in a quiet cul-de-sac. Spacious living room, three double bedrooms, separate dining area, modern galley kitchen with utilities. Built-in storage, generous garden with patio and workshop. Off-street parking. Close to shops and amenities. Must see!

Council Tax band: B

Tenure: Freehold

EPC Energy Efficiency Rating: C

EPC Environmental Impact Rating:

- Three Bedroom
- Semi Detached Bungalow
- Large Living Room
- Dining Area
- Garden Workshop
- Generous Garden
- Modern Galley Kitchen
- Utility Area



Porch

Living Room

14' 2" x 19' 7" (4.33m x 5.96m)

Dinning Room

9' 11" x 9' 5" (3.01m x 2.88m)

Kitchen

9' 0" x 13' 3" (2.75m x 4.05m)

Utility Area

5' 1" x 8' 3" (1.56m x 2.52m)

Bathroom

5' 5" x 8' 1" (1.65m x 2.47m)

Bedroom

11' 3" x 10' 8" (3.44m x 3.24m)

Bedroom

13' 2" x 7' 11" (4.01m x 2.41m)

Bedroom

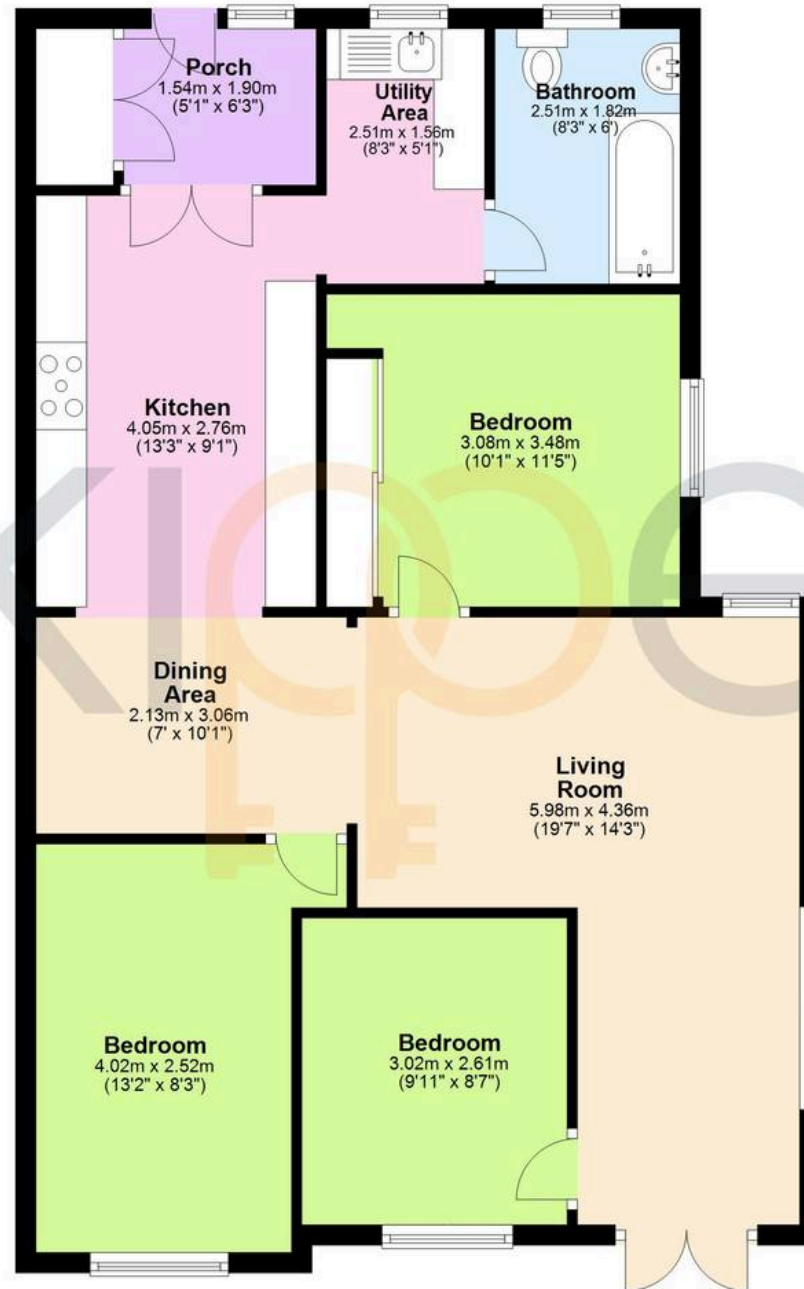
9' 3" x 8' 7" (2.82m x 2.62m)





Ground Floor

Approx. 82.3 sq. metres (886.3 sq. feet)



Total area: approx. 82.3 sq. metres (886.3 sq. feet)



Skippers Estate Agents New Romney

55 High Street - TN28 8AH

01797 362898

Skippers