

Love Homes



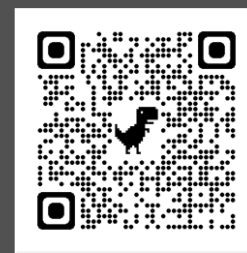
Beaumont Road, Flitwick, Bedfordshire MK45 1AL

This three-bedroom townhouse is ideally located near schools, shops, and the train station, perfect for commuters. It offers bright, spacious family living across three floors. The ground floor features a living room with a bay window and a modern, open-plan kitchen/dining room with solid wood countertops, a built-in double oven, and matching microwave. The first floor has two bedrooms and a stylish family bathroom, while the top floor hosts an impressive main bedroom with a dressing area, built-in wardrobes, and en-suite. Additional perks include a cloakroom, double glazing, central heating, and two parking spaces. The south-west facing garden has artificial grass, decking, and gated rear access, designed for easy maintenance and entertaining.



This property is presented by Duncan Stead - a Love Homes property expert with over 25 years' experience.

Find out more about this property by scanning the QR code.



0.5m



3



1



2

Tenure: Freehold

Council Tax: D

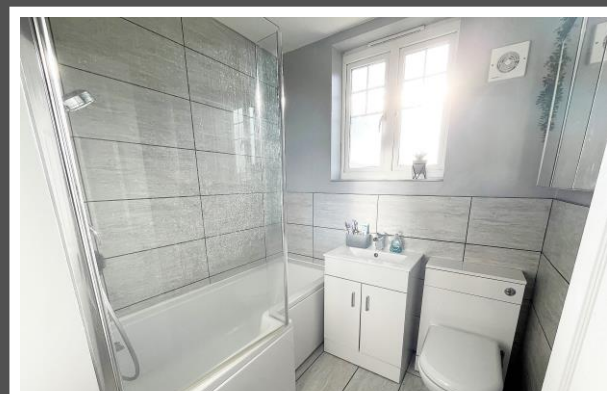




Flitwick offers a variety of amenities and quality schools. The town benefits from Tesco and Audi supermarkets with a Waitrose in neighbouring Ampthill. A new leisure centre was built in 2016 featuring a swimming pool, gym, Costa and various sports facilities.

For education, Flitwick is well-served by several reputable schools. Lower schools such as Flitwick Lower School and Templefield Lower School provide a strong foundation for young learners. Woodside Middle School Academy which then feeds into Redborne Upper School & Community College in nearby Ampthill. Additionally, there are several nurseries and pre-schools available, ensuring quality early years education.

The town is also well-connected, with Flitwick railway station offering regular services to London and Bedford, with the fast train reaching St Pancras in around 40 minutes.





Score	Energy rating	Current	Potential
92+	A		
81-91	B		89 B
69-80	C	79 C	
55-68	D		
39-54	E		
21-38	F		
1-20	G		



These particulars are set out as a general outline in accordance with the Property Misdescriptions Act (1991) only for the guidance of intending purchasers or lessees, and do not constitute any part of an offer or contract. Details are given without any responsibility, and any intending purchasers, lessees or third parties should not rely on them as statements or representations of fact but must satisfy themselves by inspection or otherwise as to the correctness of each of them. We have not carried out a structural survey and the services, appliances and specific fittings have not been tested. All photographs, measurements, floor plans and distances referred to are given as a guide only and should not be relied upon for the purchase of carpets or any other fixtures or fittings. Gardens, roof terraces, balconies and communal gardens as well as tenure and lease details cannot have their accuracy guaranteed for intending purchasers. Lease details, service ground rent (where applicable) are given as a guide only and should be checked and confirmed by your solicitor prior to exchange of contracts. No person in the employment of Love Homes has any authority to make any representation or warranty whatever in relation to this property. Purchase prices, rents or other prices quoted are correct at the date of publication and, unless otherwise stated, are exclusive of VAT. We retain the copyright in all advertising material used to market this Property. All information is as advised by the seller and subject to change. Council tax bands can be subject to change by the local council.

5 The Russell Centre, Coniston Road, Flitwick, MK45 1QY  
 Tel: 01525 713111

Email: [flitwick@lovehomes.uk](mailto:flitwick@lovehomes.uk)

[www.lovehomes.uk](http://www.lovehomes.uk)



**Love Homes**