



108 High Street, Lydd

Romney Marsh

£200,000

108 High Street

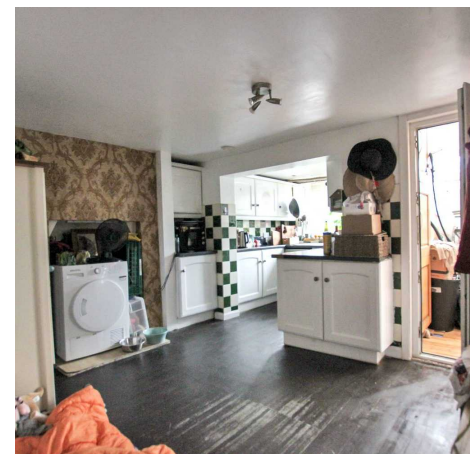
Lydd, Romney Marsh

Charming 2-bed end terrace cottage in sought-after Lydd. Cosy living room, light dining area, modern kitchen, utility room, 2 double beds, garden oasis. Close to amenities, schools, bus routes. Perfect village life. Book a viewing today!

Council Tax band: B

Tenure: Freehold

- Two Bedroom
- End of Terrace Cottage
- Two Reception Rooms
- Generous Rear Garden
- Chain Free
- Upstairs Bathroom
- Close to Local Shops





Lounge
12' 10" x 9' 10" (3.92m x 3.00m)

Inner Hallway

Dining Area
9' 5" x 12' 10" (2.86m x 3.92m)

Kitchen Area
6' 11" x 6' 11" (2.10m x 2.10m)

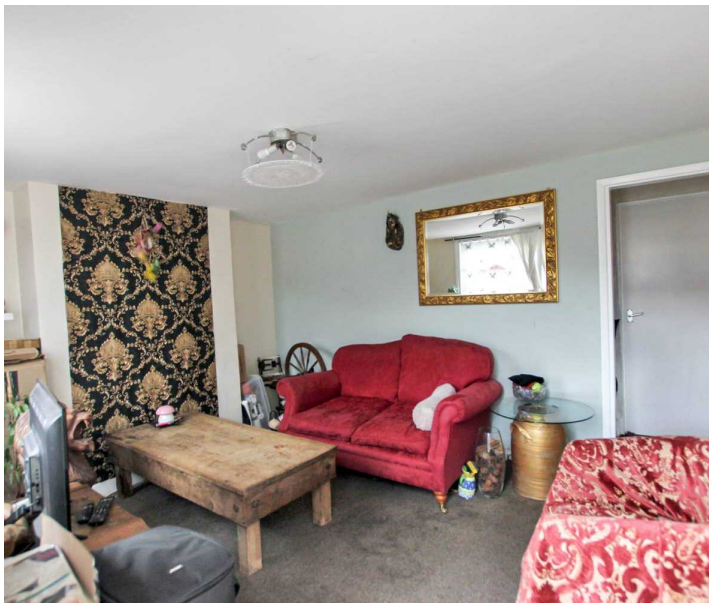
Utility Room
3' 11" x 6' 11" (1.20m x 2.10m)

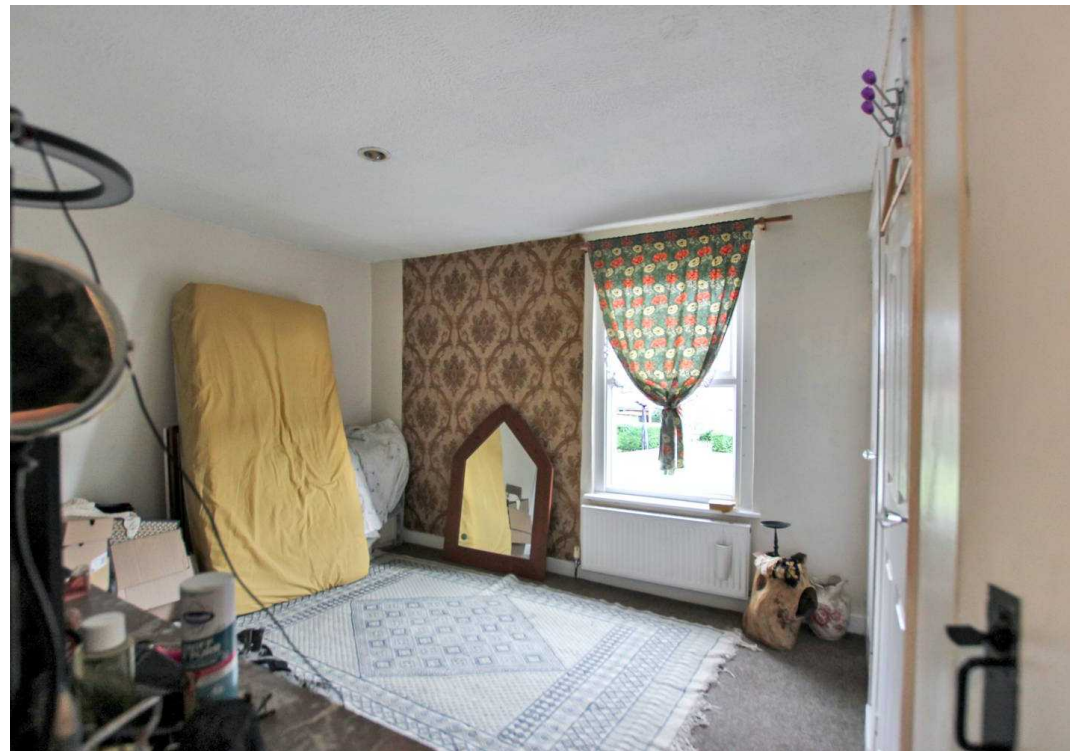
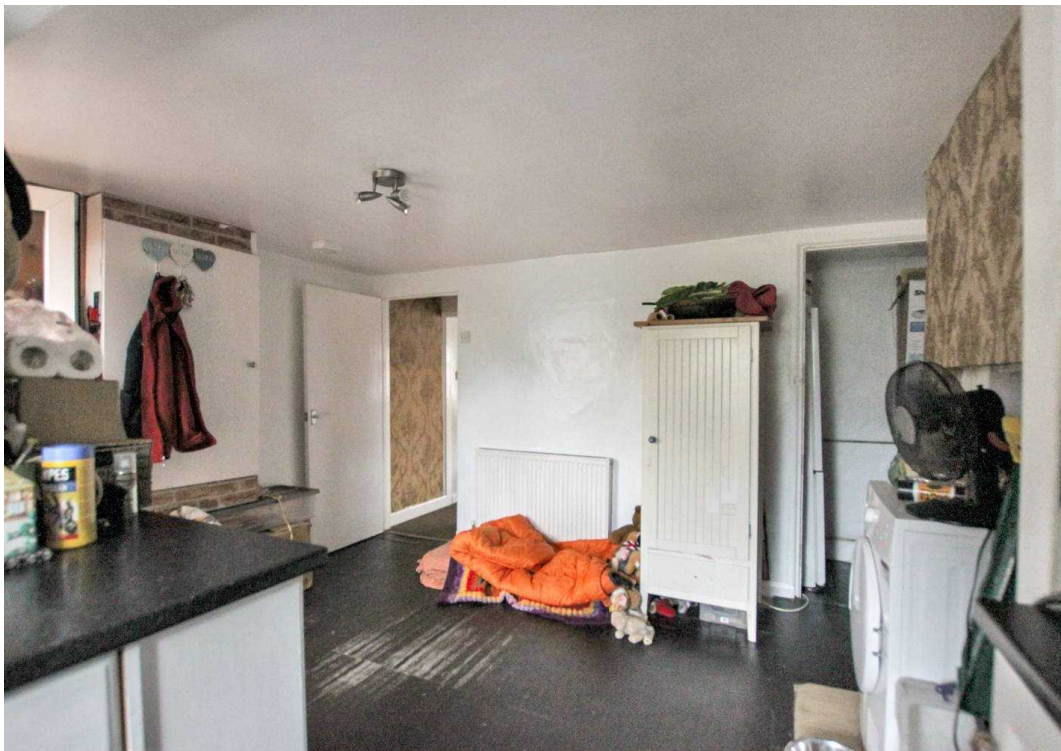
Landing

Bedroom
12' 10" x 9' 10" (3.92m x 3.00m)

Bedroom
9' 2" x 9' 2" (2.80m x 2.80m)

Bathroom
5' 11" x 6' 11" (1.80m x 2.11m)





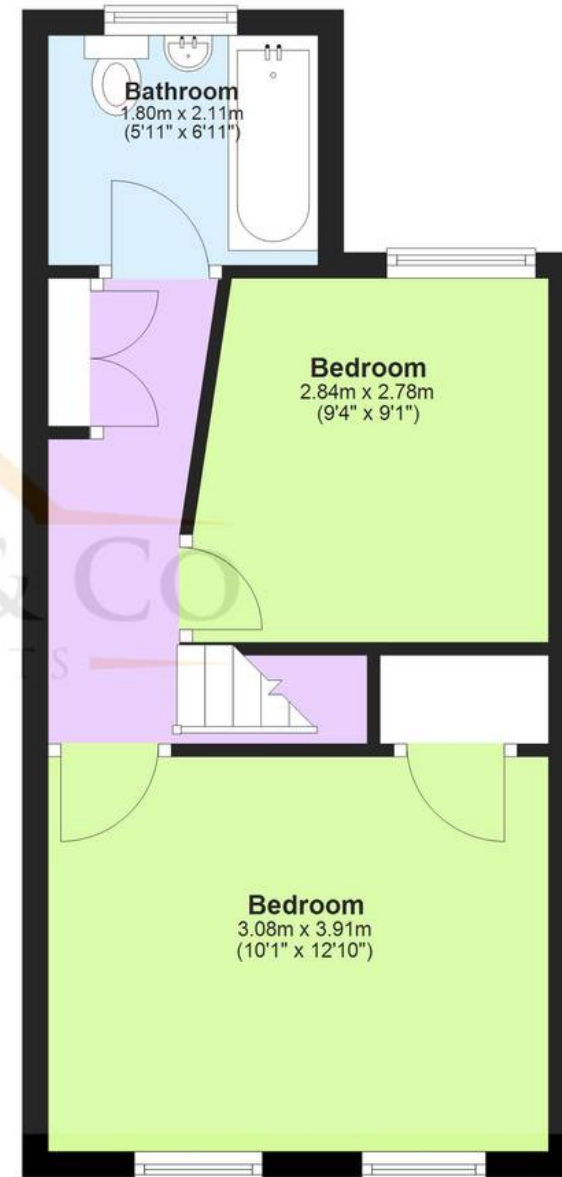
Ground Floor

Approx. 35.2 sq. metres (378.7 sq. feet)



First Floor

Approx. 30.6 sq. metres (329.9 sq. feet)



Total area: approx. 65.8 sq. metres (708.6 sq. feet)

These particulars are intended to give a fair and reliable description of the property but no responsibility for any inaccuracy or error can be accepted and do not constitute an offer or contract. We have not tested any services or appliances (including central heating if fitted) referred to in these particulars and purchasers are advised to satisfy themselves as to the working order and condition, if a property is unoccupied at any time there may be reconnection charges for any switched off/disconnected or drained services or appliances. All measurements are approximate.



Andrew & Co Estate Agents - New Romney

01797 362898

newromney@andrewandco.co.uk

