



APARTMENT 246 VELOCITY **VILLAGE**

- **Rent £825 per calendar month**
Payable 1st of each month by Direct Debit
- **No Admin Fee - Free Referencing by HomeLet**
- **Available from 14/10/2024**
- **12 Month Tenancy**
- **Deposit**
£951.92 (5 Weeks rent) held by Deposit Protection Service
- **Onsite Amenities**
 - Maintenance Team
 - NCP Car Park
 - V LOUNGE Residents Space
 - PACKCITY Parcel Management
 - ANYTIME FITNESS Gym
 - YEPPS Café
 - HYPEROPTIC Full Fibre Broadband
 - AMAZON Lockers
 - Landscaped COURTYARDS.

FOR FURTHER DETAILS & TO BOOK THIS APARTMENT
Call: 0114 213 1760 or Email: LETTINGS@VELOCITY-VILLAGE.CO.UK
LETTINGS LOUNGE OPEN MONDAY TO FRIDAY 9AM-5PM

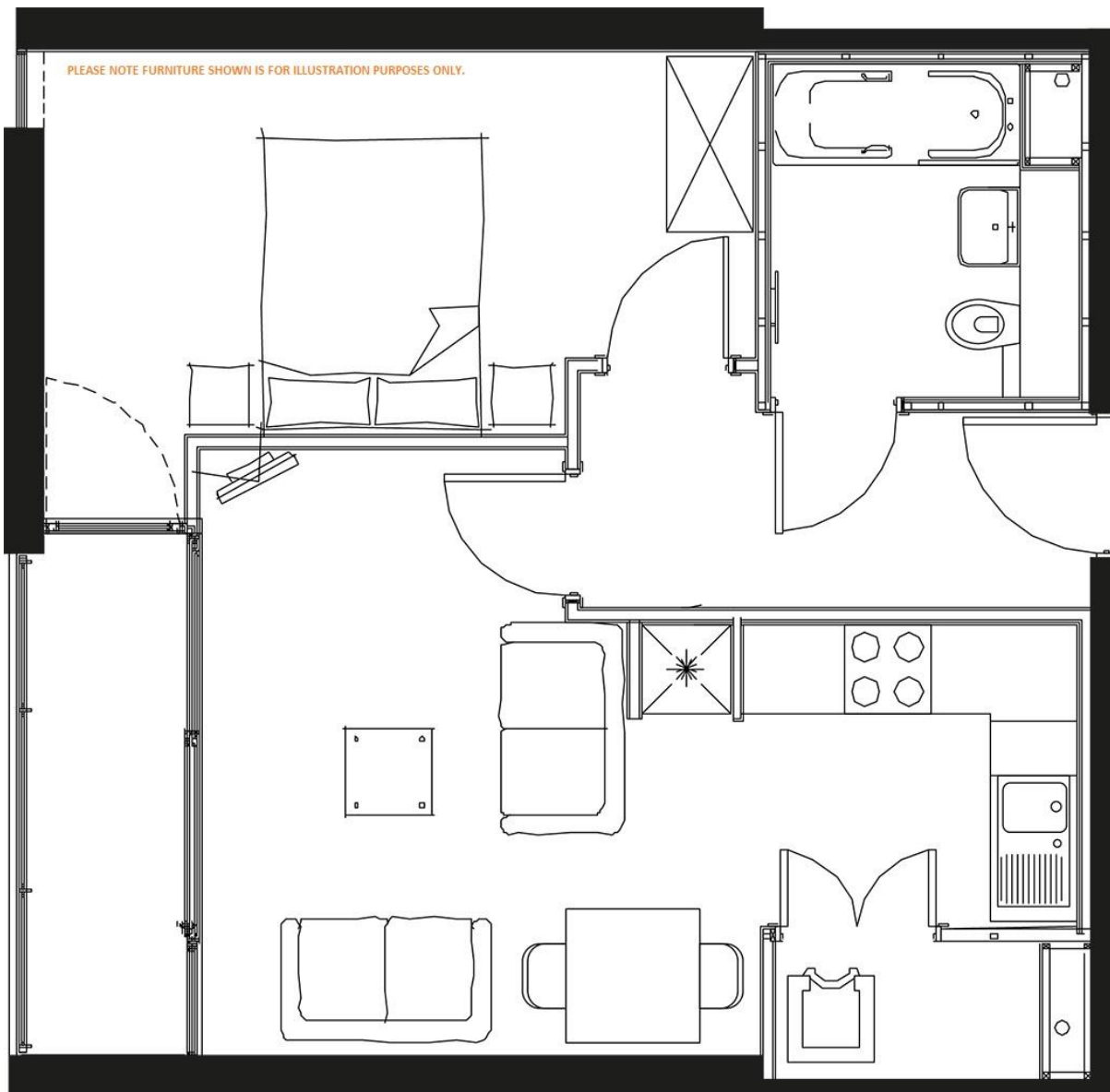
APARTMENT 246 VELOCITY VILLAGE

ONE BEDROOM APARTMENT

This contemporary & stylish designed One Bedroom apartment overlooking internal courtyard is fully furnished to a high standard with full height floor to ceiling glass, generous open plan kitchen, dining & living room area.

Measures approx. 491 Sq Ft / 45.6 Sq Mt.

Located on Level 6



- **Rent £825 per calendar month**

Payable 1st of each month by Direct Debit. Rent per Apartment not per person.

- **Available for Occupancy from 14/10/2024**

Please allow a minimum of 7 days for referencing.

- **Deposit £951.92**

5 Weeks rent held by Deposit Protection Service, payable at point of booking & refundable at the end of the Tenancy (subject to a satisfactory inspection).

- **Available for Working Professionals and Post Graduate Students**

Undergraduate students do not meet the criteria for this property

- **Utilities**

We suggest you estimate between £200-£220 per month to cover Water, Electricity & Wi-Fi. Each apartment is individually metered for Water & Electricity meaning you only pay for what you use.

- **Council Tax Band B**

- **Energy Performance Rating C**

- **Furniture & Fixtures**

Apartment includes Sofa, Coffee Table, TV Stand, Dining Table & Chairs x2, Double Bed, Bedside Table x2, Double Wardrobe, Free standing Fridge Freezer, Washer Dryer.

- **Onsite Amenities**

Maintenance Team, NCP Car Park (chargeable), V LOUNGE Residents space, Anytime Fitness Gym (chargeable), Pack City & Amazon Lockers, YEPPS Café, Hyperoptic full fibre broadband, Landscaped Courtyards.

- **Pets – Pets are not permitted in the apartment**