



APARTMENT 286 VELOCITY **VILLAGE**

- **Rent £695 per calendar month**
Payable 1st of each month by Direct Debit
- **No Admin Fee - Free Referencing by HomeLet**
- **Available Immediately**
- **12 Month Tenancy**
- **Deposit**
£801.90 (5 Weeks rent) held by Deposit Protection Service
- **Onsite Amenities**
 - Maintenance Team
 - NCP Car Park
 - V LOUNGE Residents Space
 - PACKCITY Parcel Management
 - ANYTIME FITNESS Gym
 - YEPPS Café
 - HYPEROPTIC Full Fibre Broadband
 - AMAZON Lockers
 - Landscaped COURTYARDS.

FOR FURTHER DETAILS & TO BOOK THIS APARTMENT
Call: 0114 213 1760 or Email: LETTINGS@VELOCITY-VILLAGE.CO.UK
LETTINGS LOUNGE OPEN MONDAY TO FRIDAY 9AM-5PM



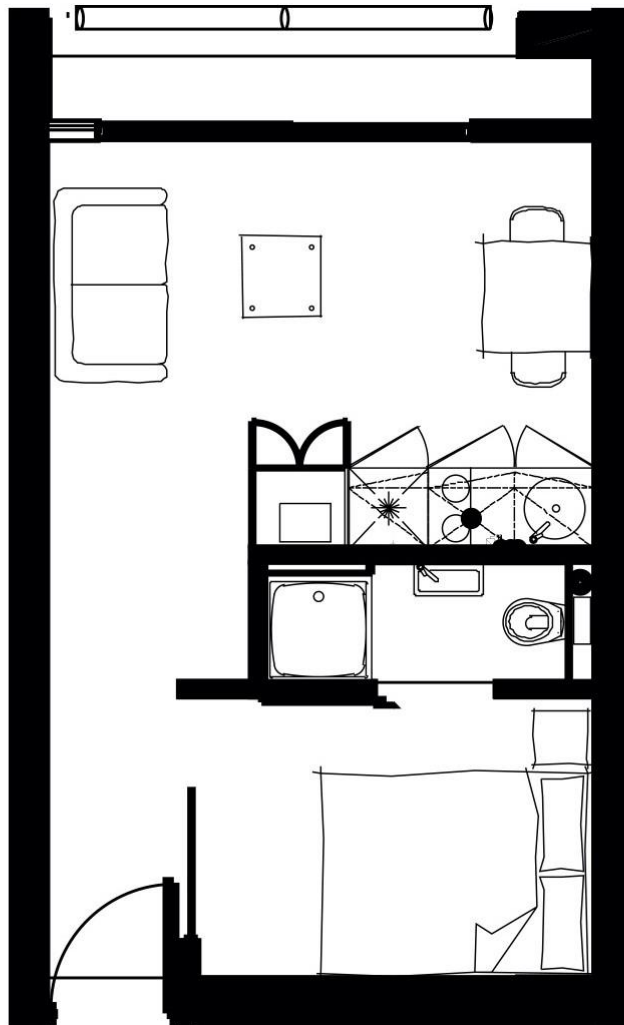
APARTMENT 286 VELOCITY VILLAGE

STUDIO APARTMENT

This contemporary & stylish designed Studio apartment overlooking Upper Courtyard is fully furnished to a high standard with full height floor to ceiling glass, generous open plan kitchen, dining & living room area.

Measures approx. 340 Sq Ft/31.5 Sq Mt.

Located on Level 8



Contact us at 0114 2131760 or LETTINGS@VELOCITY-VILLAGE.CO.UK

- **Rent £695 per calendar month**

Payable 1st of each month by Direct Debit. Rent per Apartment not per person.

- **Available for immediate occupancy**

Please allow a minimum of 7 days for referencing.

- **Deposit £801.90**

5 Weeks rent held by Deposit Protection Service, payable at point of booking & refundable at the end of the Tenancy (subject to a satisfactory inspection).

- **Available for Working Professionals and Post Graduate Students**

Undergraduate students do not meet the criteria for this property

- **Utilities**

We suggest you estimate between £200-£220 per month to cover Water, Electricity & Wi-Fi. Each apartment is individually metered for Water & Electricity meaning you only pay for what you use.

- **Council Tax Band B**

- **Energy Performance Rating C**

- **Furniture & Fixtures**

Apartment includes Sofa, Coffee Table, TV Stand, Dining Table & 2 Chairs, Fridge with Freezer Box. Bed, Bedside Table, Wardrobe.

- **Onsite Amenities**

Maintenance Team, NCP Car Park (chargeable), V LOUNGE Residents space, Anytime Fitness Gym (chargeable), Pack City & Amazon Lockers, YEPPS Café, Hyperoptic full fibre broadband, Landscaped Courtyards.

- **Pets – Please note Pets are not permitted in this apartment.**

Contact us at 0114 2131760 or LETTINGS@VELOCITY-VILLAGE.CO.UK