



**20 Lambton Road, Worsley**

In Excess of **£485,000**



# 20 Lambton Road

Worsley, Manchester

Millbrooke Estate Agents are delighted to offer for sale this impressive four bedroom semi-detached family home on the picturesque cul-de-sac "Lambton Road, Worsley". The property is offered with the benefit of no onward chain and early viewing is highly advised!

Council Tax band: D

Tenure: Leasehold

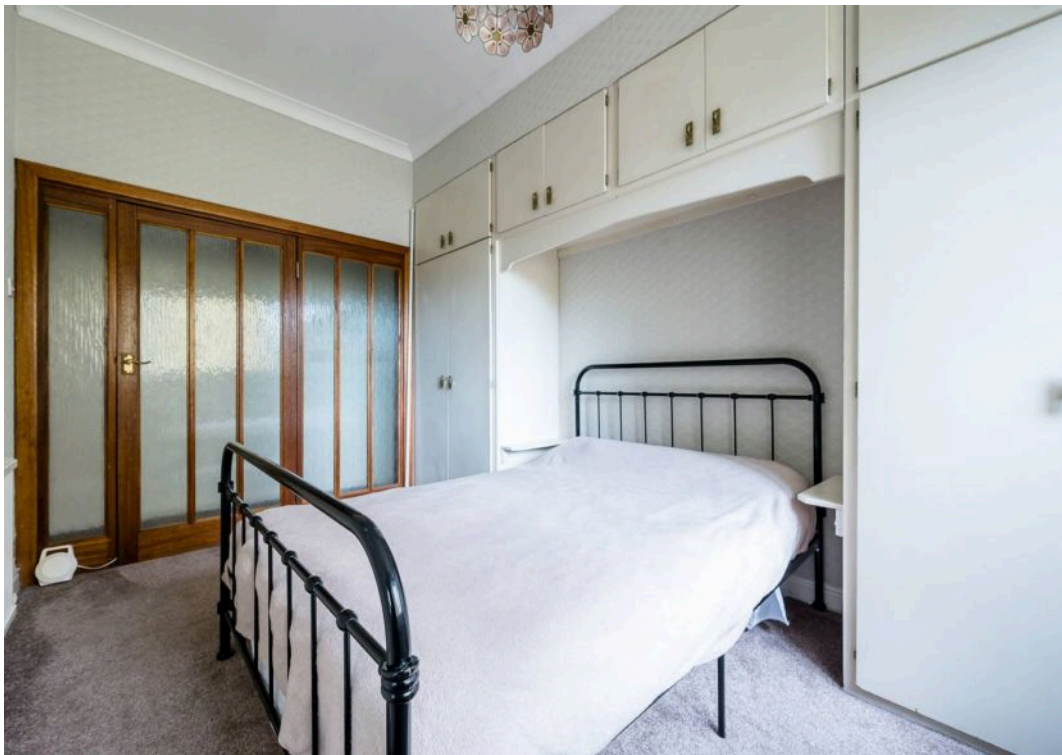
EPC Energy Efficiency Rating: D

EPC Environmental Impact Rating: D

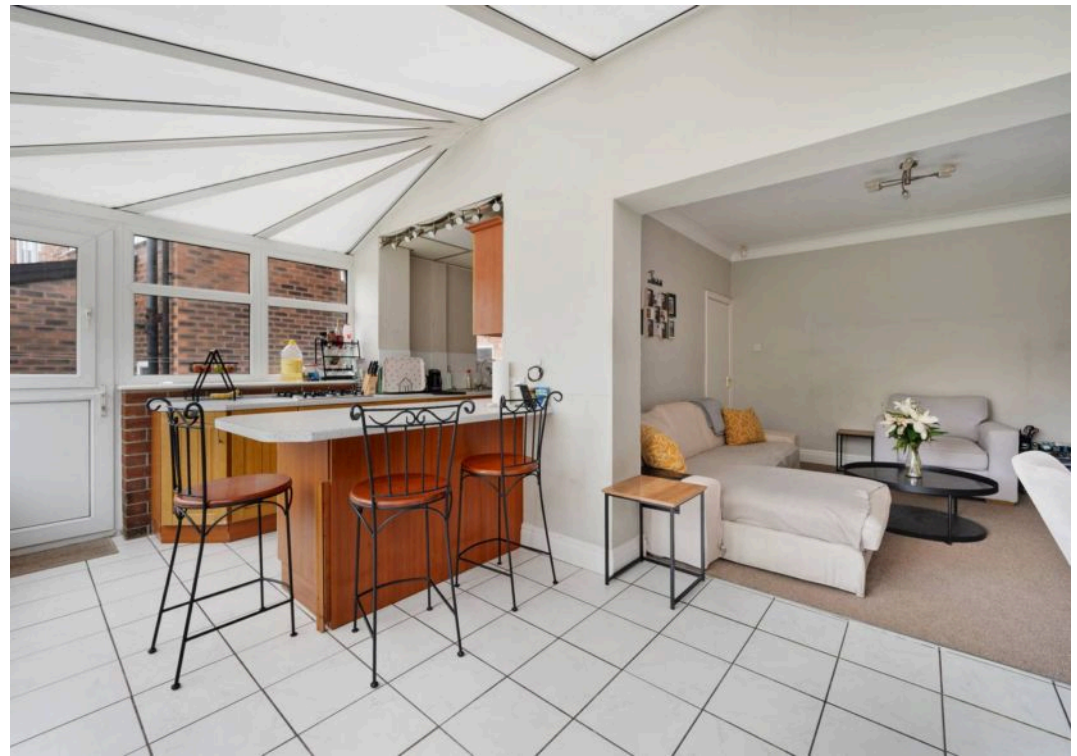
- Prime Worsley Location
- Spacious Semi-Detached Property
- Well Presented Throughout
- Large Mature Gardens
- Many Local Amenities
- Driveway Parking and Single Garage
- Fabulous Family Home
- No Onward Chain







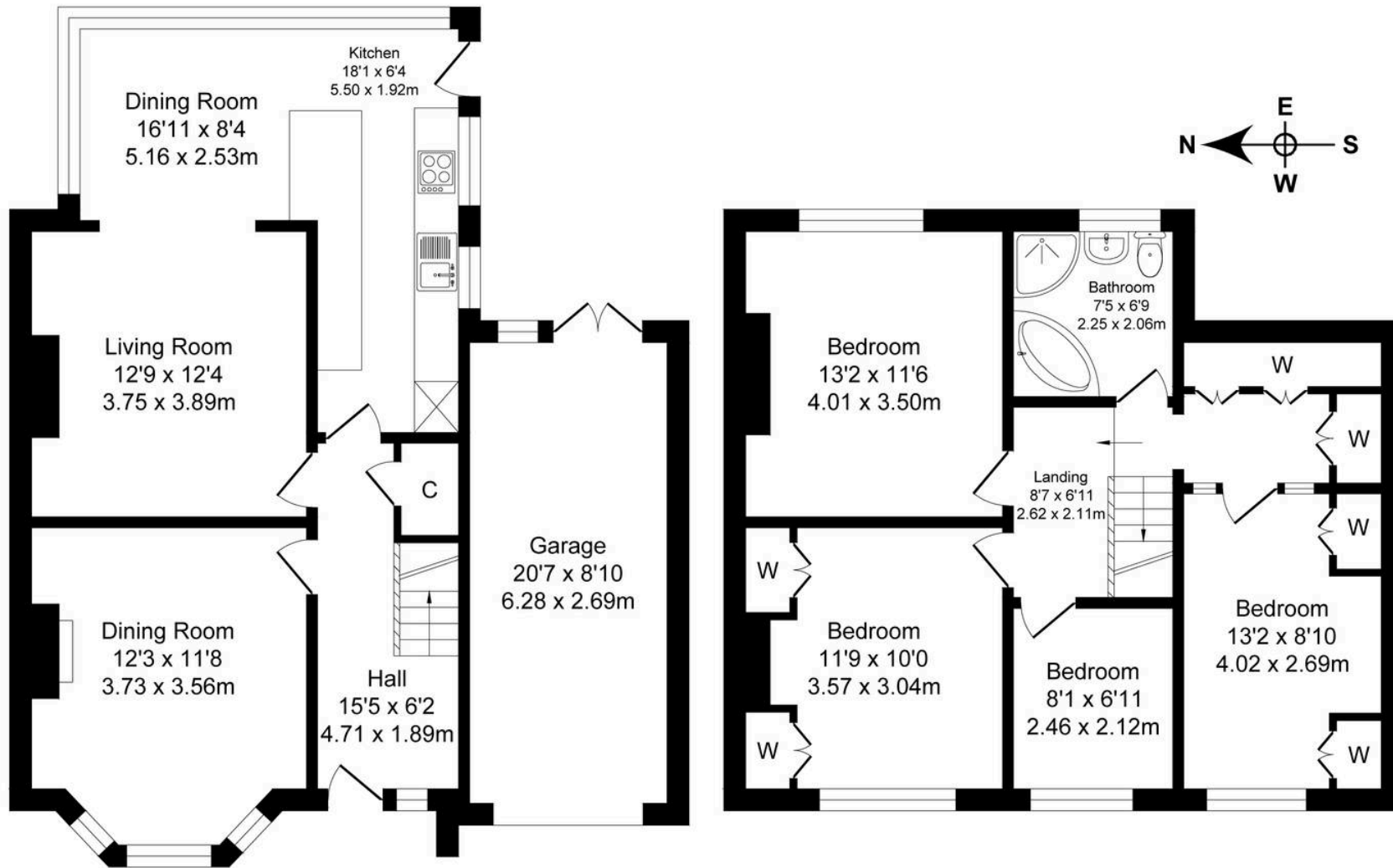




# Lambton Road

Total Approx. Floor Area 1500 Sq.ft. (139.4 Sq.M.)

Surveyed and drawn by Lens Media for illustrative purposes only. Not to scale. Whilst every attempt was made to ensure the accuracy of the floor plan, all measurements are approximate and no responsibility is taken for any error.



Ground Floor

Approx. Floor Area 839 Sq.Ft (77.9 Sq.M.)

First Floor

Approx. Floor Area 662 Sq.Ft (61.5 Sq.M.)





## Millbrooke Estate Agents

271 Mosley Common Road, Worsley, Manchester - M28 1BZ

0161 790 5154 • [hello@millbrooke.co](mailto:hello@millbrooke.co) • [millbrooke.co](http://millbrooke.co)

