



## 177b Church Street, Blackpool

Blackpool, FY1 3NX

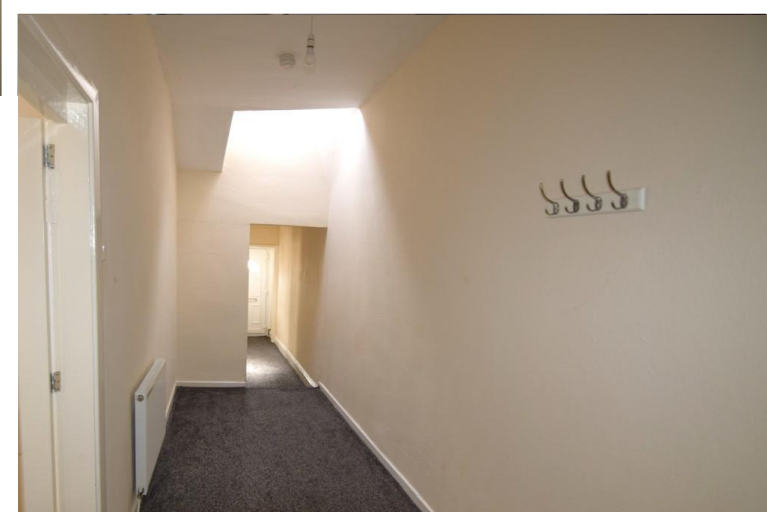
- **LARGE SPACIOUS 2 BEDROOM 2ND FLOOR FLAT**
- **PLACED NEAR TOWN CENTRE**
- **MOVE IN COSTS £1333.23**
- **DOUBLE GLAZED, GAS CENTRAL HEATING**

**£619 pcm**

EPC Rating '39'



177b Church Street, Blackpool, FY1 3NX



## Property Description

NEW TO MARKET A GOOD SIZED 2 BEDROOM FLAT PLACED NEAR BLACKPOOL TOWN CENTRE. WITHIN WALKING DISTANCE OF LOCAL SHOPS AND TOWN CENTRE.

COMPRISING ENTRANCE HALLWAY, BATHROOM WITH BATH WITH ELECTRIC SHOWER OVER, WC AND WASH HAND BASIN, FITTED KITCHEN WITH GAS HOB, ELECTRIC OVEN, RANGE OF WALL AND BASE UNITS. 2 DOUBLE BEDROOMS WITH UPVC WINDOWS, RADIATORS.

GAS CENTRAL HEATING, DOUBLE GLAZED, ACCESS VIA REAR ALLEY



**HALLWAY**  
7' 75" x 5' 97" (4.04m x 3.99m) LARGE  
SPACIOUS HALLWAY

**KITCHEN**  
2' 55" x 2' 47" (2.01m x 1.8m) FITTED KITCHEN  
WITH RANGE OF WALL AND BASE UNITS  
PLUMBED FOR WASHING MACHINE

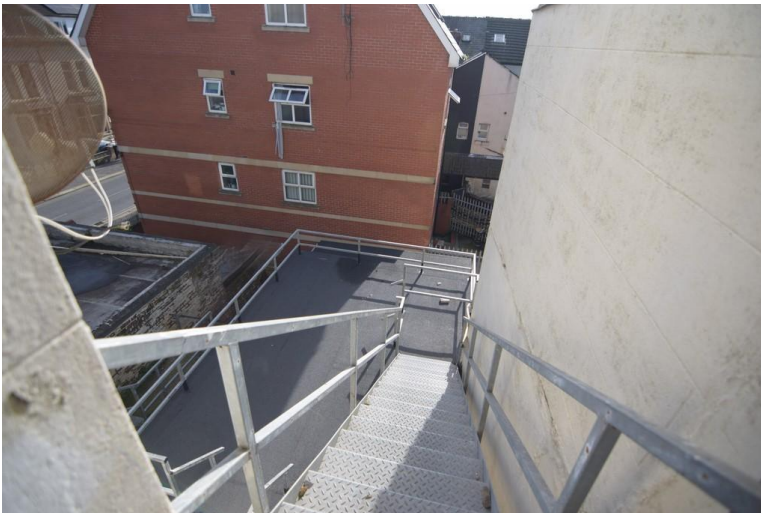
**BATHROOM**  
2' 63" x 7' 52" (2.21m x 3.45m) BATHROOM  
WITH BATH, ELECTRIC SHOWER OVER, WASH  
HAND BASIN, WC

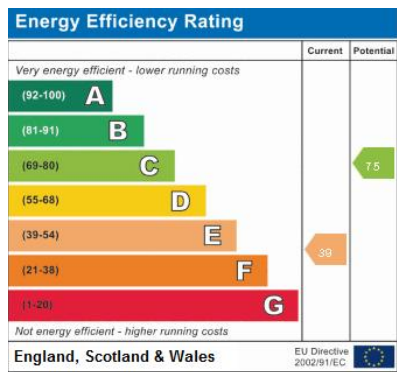


**BEDROOM**  
2' 08" x 3' 39" (0.81m x 1.91m) DOUBLE  
BEDROOM WITH UPVC WINDOW AND  
RADIATOR

**BEDROOM**  
3' 81" x 4' 81" (2.97m x 3.28m) DOUBLE  
BEDROOM WITH UPVC WINDOW AND  
RADIATOR

**LOUNGE**  
3' 50" x 4' 51" (2.18m x 2.51m) LOUNGE WITH  
UPVC WINDOW, RADIATOR





Address:  
Church Bldg 1

21 Counce Street  
Blackpool  
Lancashire  
FY1 3LA

[www.moveholmes.co.uk](http://www.moveholmes.co.uk)  
01253 928200  
[enquiries@moveholmes.co.uk](mailto:enquiries@moveholmes.co.uk)

Agents Note: Whilst every care has been taken to prepare these sales particulars, they are for guidance purposes only. All measurements are approximate and are for general guidance purposes only and whilst every care has been taken to ensure their accuracy, they should not be relied upon and potential buyers are advised to recheck the measurements