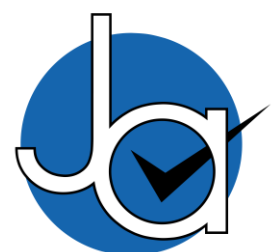




## 2 Bedroom Ground Floor Maisonette located in Tiptree.

Find us on..



**JOHN ALEXANDER**  
ESTATE AGENTS

# Church Mews Tiptree Colchester CO5 0SN



2



1



1



TBC



Guide Price **£220,000**  
to **£230,000**

## FULL DESCRIPTION

### OVERVIEW

We are delighted to offer this two bedroom ground floor maisonette with CAR PORT. The property is well presented throughout with open plan kitchen/living room and own front door accessing the property.

### ENTRANCE HALL

Radiator, airing cupboard.

### OPEN PLAN KITCHEN/LOUNGE

**20' 7" x 13' 0" (6.27m x 3.96m)**

Lounge area;

Double glazed French doors to outside, radiator.

Kitchen/Breakfast Area;

Stainless steel sink unit with cupboards under, matching base and eye level cupboards, roll top worksurfaces, built in oven, hob and chimney style extractor fan, space for washing machine and fridge freezer, wall mounted gas boiler concealed within cupboard space, breakfast bar, double glazed window.

### BEDROOM ONE

**14' 10" x 11' 3" (4.52m x 3.43m)**

Double glazed window, radiator.

### BEDROOM TWO

**9' 7" x 9' 2" (2.92m x 2.79m)**

Double glazed window, Radiator.

### SHOWER ROOM

Shower, pedestal wash basin, low level WC, radiator, obscure double glazed window, extractor fan, electric heater.

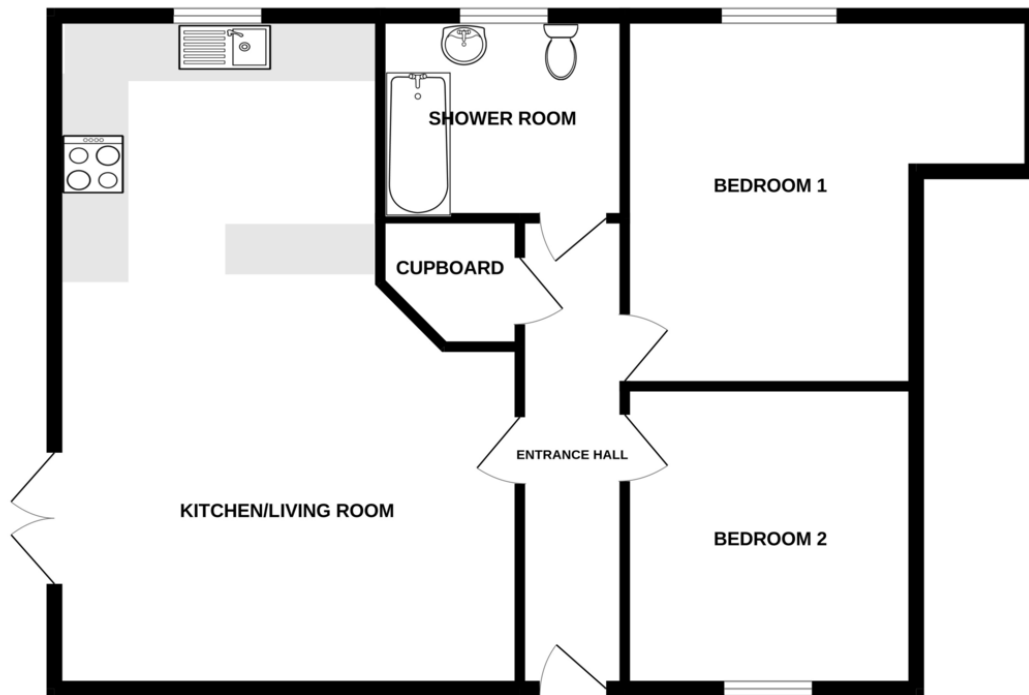
### CARPORT

Providing off road undercover.

### COMMUNAL GARDENS

Providing washing lines to dry clothing, lawned area, bin store.





Whilst every attempt has been made to ensure the accuracy of the floorplan contained here, measurements of doors, windows, rooms and any other items are approximate and no responsibility is taken for any error, omission or mis-statement. This plan is for illustrative purposes only and should be used as such by any prospective purchaser. The services, systems and appliances shown have not been tested and no guarantee as to their operability or efficiency can be given.  
Made with Metropix ©2024

**CONTACT**  
**1 Church Road**  
**Tiptree**  
**Colchester**  
**Essex**  
**CO5 0LG**

**E [info@john-alexander.co.uk](mailto:info@john-alexander.co.uk)**

**T 01621 814334 [www.john-alexander.co.uk](http://www.john-alexander.co.uk)**

Find us on..



**JOHN ALEXANDER**  
**ESTATE AGENTS**