



51 McLean Crescent, Whitburn

Whitburn

Offers Over £260,000



51 McLean Crescent

Whitburn, Whitburn

Introducing 51 McLean Crescent, a charming three-bedroom semi-detached home situated within the highly sought-after Heartlands Development.

The "Rosedale" by Bellway is a popular house style, well-known for its spacious and thoughtful internal layout, and this particular property stands out with its exceptional location. It offers tranquil, unobstructed views to the rear, ensuring complete privacy as no neighbouring homes overlook the property.

Inside, the property is impeccably maintained with modern, fresh and neutral décor throughout, making it move-in ready for its new owners.

The ground floor includes a generous lounge/dining room, ideal for both relaxation and entertaining. The well-appointed kitchen is bright and hosts ample worktop and cupboard space. A convenient downstairs WC completes the downstairs layout of this home.



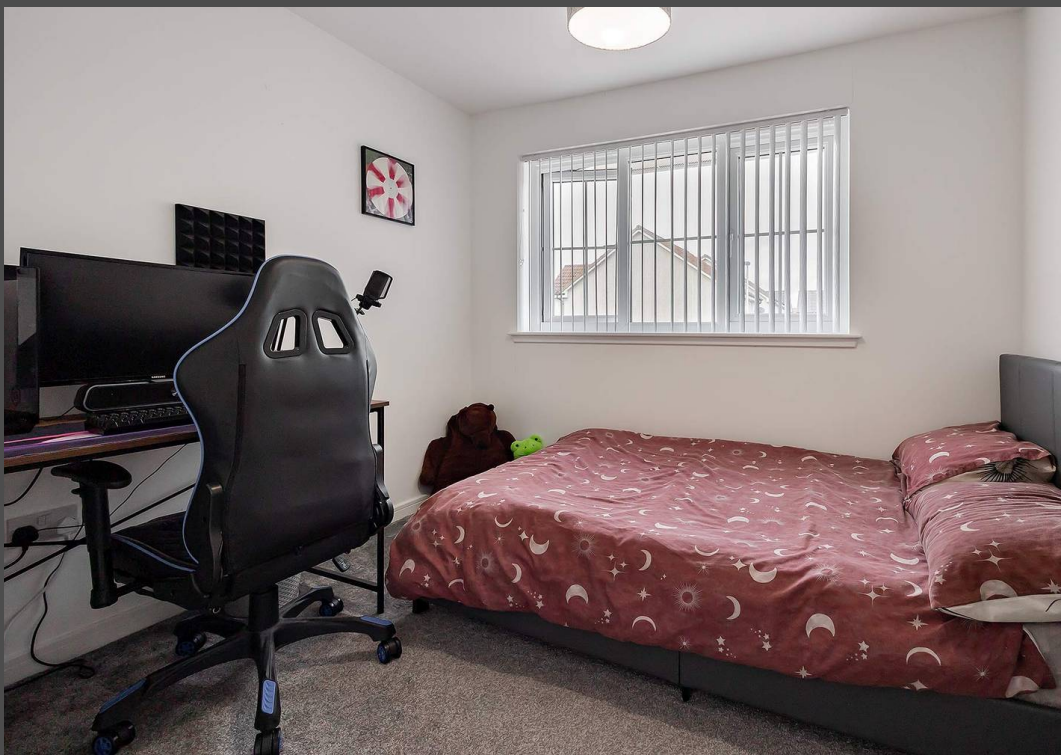
Upstairs, the home features three comfortable double bedrooms, all laid with lush grey carpets, and two of which boasting fitted mirrored wardrobes. The principle bedroom offers the added luxury of an en-suite. The main bathroom and en-suite both feature elegant half-height tiling, adding a touch of luxury to the modern interior.

This home benefits from practical yet desirable features, including a double driveway for off-street parking and a single attached garage.

The south-facing garden, is largely laid to lawn, and also boasts a slabbed patio area—perfect for relaxing and making the most of the sunshine.

This home is perfect for families or couples looking for a peaceful retreat, with the added benefits of modern living and a superb location within the Heartlands Development. Don't miss the opportunity to make this beautiful home yours!





Approximate Gross Internal Area (Excluding Garage) = 103.0 sq m / 1109 sq ft

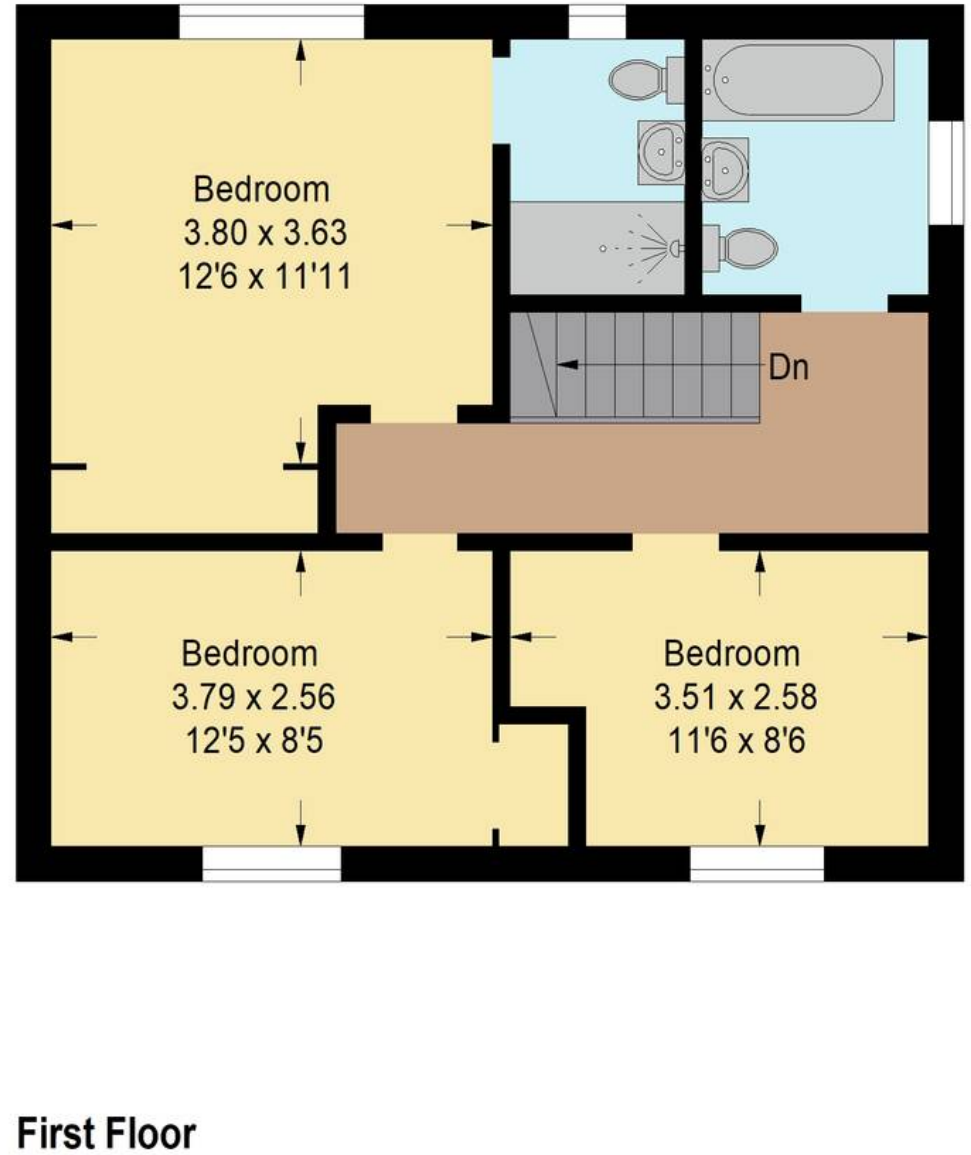
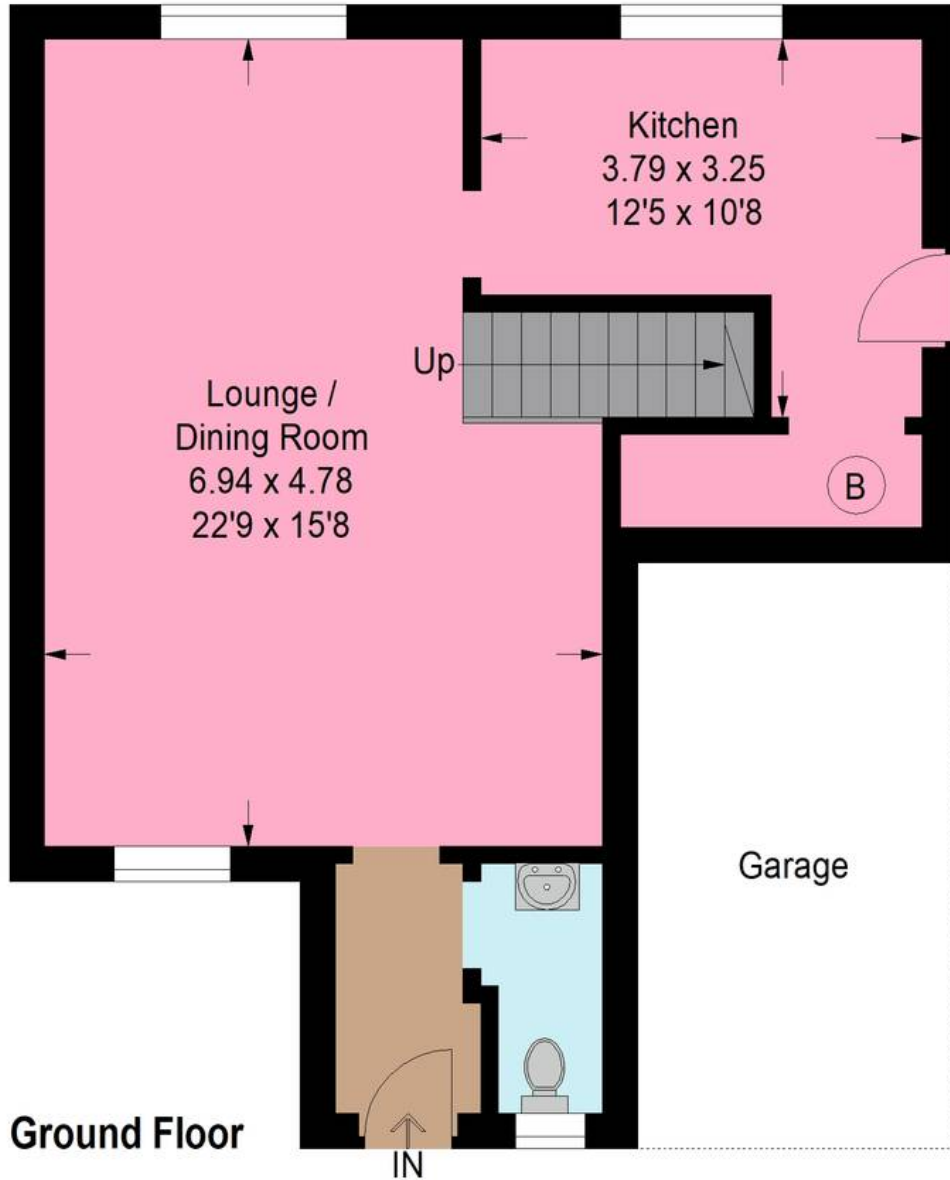


Illustration For Identification Purposes Only. Not To Scale (ID:1138797 / Ref:89492)



Bridges Properties

94 West Main Street, Whitburn - EH47 0QU

01501519435

info@bridges-properties.co.uk

www.bridges-properties.co.uk/

