

The Litchard

3 Bedroom semi (En suite)

877 sq ft (81 sq m)



Semi



2 Double



1 Single



1 En suite



1 Bath

A space to call home

Our Litchard semi detached home offers 2 double bedrooms and 1 single and features a spacious kitchen/dining area with French doors to the rear garden and en suite to bedroom 1. A spacious and lovely semi detached home.

Beautiful and built to last.



Specification

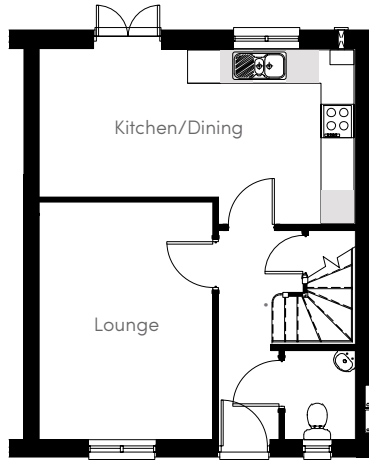
- Spacious kitchen/dining area with French doors to rear garden
- Downstairs cloakroom
- Oven, hob and extractor fan
- En suite to bedroom 1
- Family bathroom
- Energy efficient heating system
- NHBC ten year warranty

llanmoor-homes.co.uk



THE LITCHARD

Llanmoor Homes



Ground Floor

Lounge

10' x 13' 9"

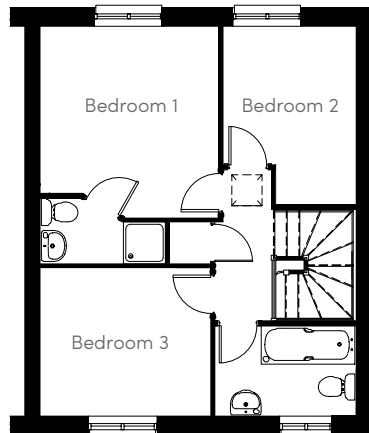
Cloaks

4' 3" x 5' 3"

Kitchen/Dining

18' 5" x 10' 2"

(max)



First Floor

Bedroom 1

10' 5" x 11' 2"

Bedroom 3

7' 8" x 10' 5"

En suite

3' 11" (max) x
7' 5"

Bathroom

8' 5" x 5' 3"

Bedroom 2

9' 11" x 8' 8"

For current availability
and Sales Office opening
times visit us online

llanmoor-homes.co.uk

Head office **01443 228 413**

llanmoor-homes.co.uk

Follow us    

These particulars are for illustration only. We operate a policy of continuous product development and individual features such as windows, garages and elevational treatment may vary from time to time. Consequently these particulars should be treated as a general guidance only and cannot be relied upon accurately describing any of the Specified Matters prescribed by any Order made under the Property Misdescriptions Act 1991. Nor do they constitute a contract, part of any contract or a warranty.

Llanmoor Development Co. Limited - 63-65 Talbot Road, Talbot Green, Pantytlun, Rhondda Cynon Taff CF72 8AE.

Company Registered in England & Wales. 870710. NHBC Registered No. 08253.



Virtual Reality tour available for this property on llanmoor-homes.co.uk

