

## The Oakfield

4 Bedroom detached (En suite)  
1,432 sq ft (133 sq m)



Detached



2 Double



2 Single



1 En suite



1 Bath

### A space to call home

The Oakfield offers 2 double bedrooms and 2 single as well as some superb features such as a spacious family room/ kitchen with French doors to the rear garden to enhance the spaciousness of this lovely detached home.

Beautiful and built to last.



### Specification

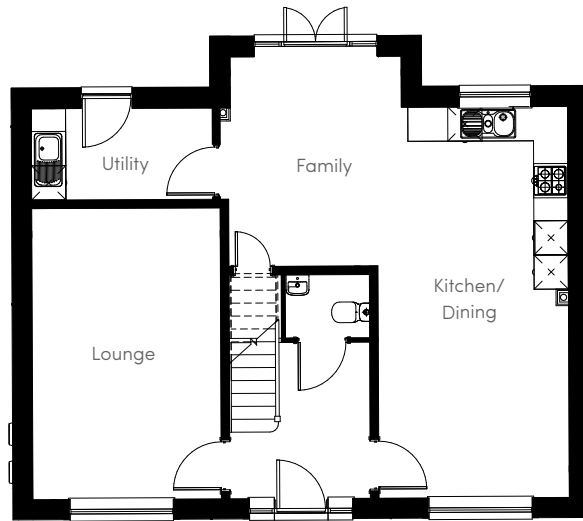
- Large kitchen/dining area
- Spacious family room/ kitchen with French doors to rear garden
- Downstairs cloakroom
- Utility room
- En suite to bedroom 1
- Family bathroom
- 2 Double bedrooms, 2 single
- Energy efficient heating systems
- NHBC ten year warranty

[llanmoor-homes.co.uk](https://llanmoor-homes.co.uk)



THE OAKFIELD

# Llanmoor Homes

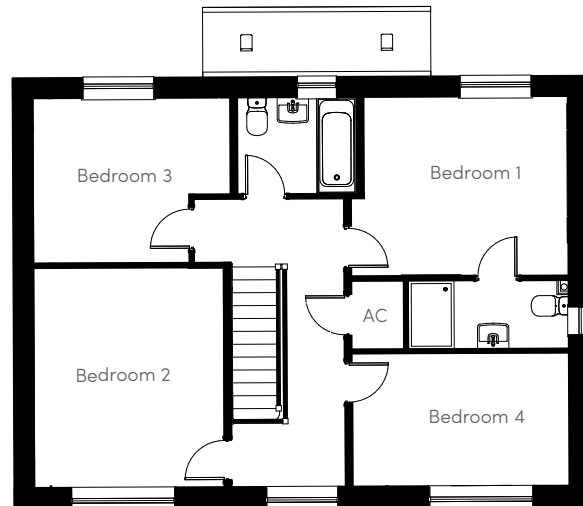


## Ground Floor

Lounge	Utility
16' 10" x 10' 10"	10' 6" x 5' 3"
Kitchen/Dining	Cloaks
22' 6" x 10' 11"	4' 9" x 3' 7"
Family	
9' 10" x 12' 1"	

For current availability  
and Sales Office opening  
times visit us online

[llanmoor-homes.co.uk](http://llanmoor-homes.co.uk)



## First Floor

Bedroom 1	Bedroom 3
11' 10" x 10' 4"	11' 5" (max) x 9' 6"
En suite	Bedroom 4
9' 2" x 3' 9"	12' 8" x 7' 9"
Bedroom 2	Bathroom
12' 9" x 10' 11"	6' 9" x 5' 6"

Head office **01443 228 413**

[llanmoor-homes.co.uk](http://llanmoor-homes.co.uk)

Follow us    

These particulars are for illustration only. We operate a policy of continuous product development and individual features such as windows, garages and elevational treatment may vary from time to time. Consequently these particulars should be treated as a general guidance only and cannot be relied upon accurately describing any of the Specified Matters prescribed by any Order made under the Property Misdescriptions Act 1991. Nor do they constitute a contract, part of any contract or a warranty.

Llanmoor Development Co. Limited - 63-65 Talbot Road, Talbot Green, Pontyclun, Rhondda Cynon Taff CF72 8AE.

Company Registered in England & Wales. 870710. NHBC Registered No. 08253.

