



Bartlams.

Flat 2, Croome House Clifton Road, Stockwell End, WV6 9AP

£285,000



Flat 2, Croome House

Clifton Road, Stockwell End

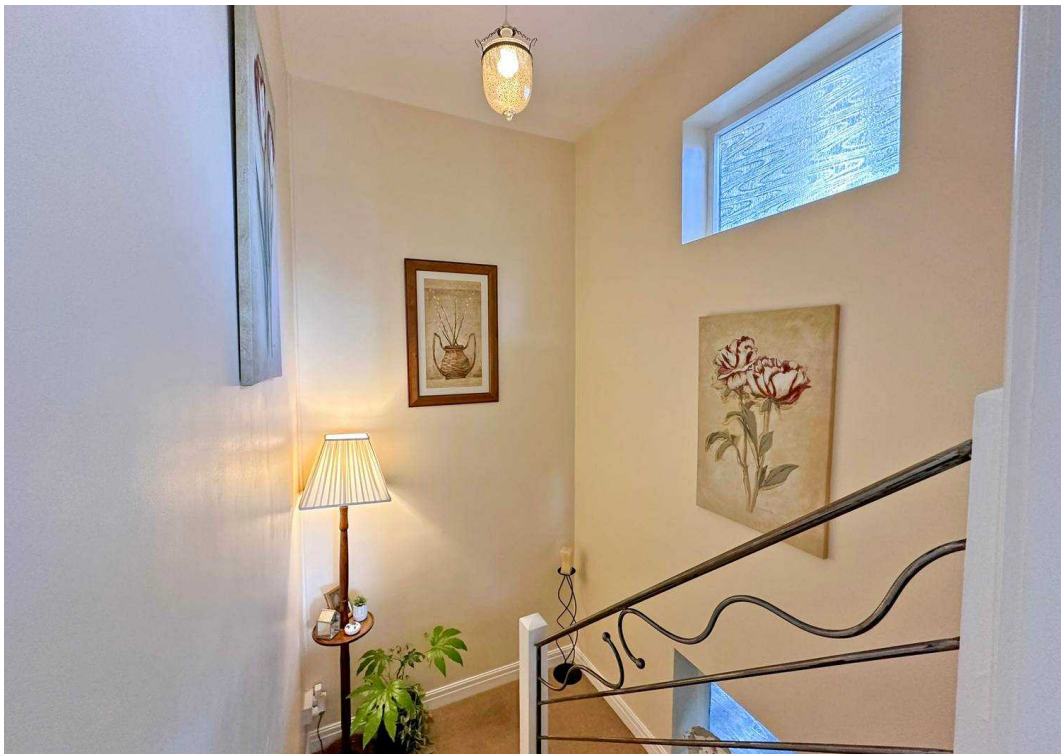
This beautifully presented and spacious apartment occupies the first floor of Croome House, a purpose-built 1960s development consisting of two apartments. Flat 2 offers serene, leafy views of the surrounding area, highlighted by the property's unusually large windows. Located within a 5-minute walk of the picturesque Upper Green and the iconic Tettenhall Pool, it also enjoys close proximity to the highly desirable Tettenhall village community, just a short stroll away.

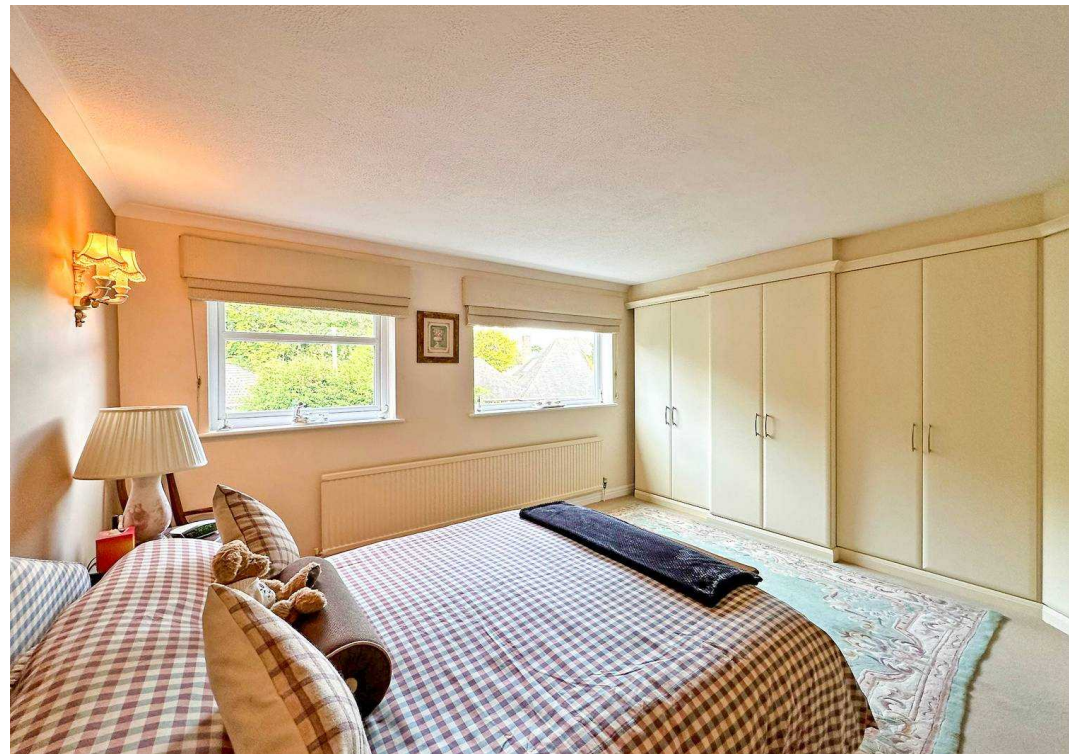
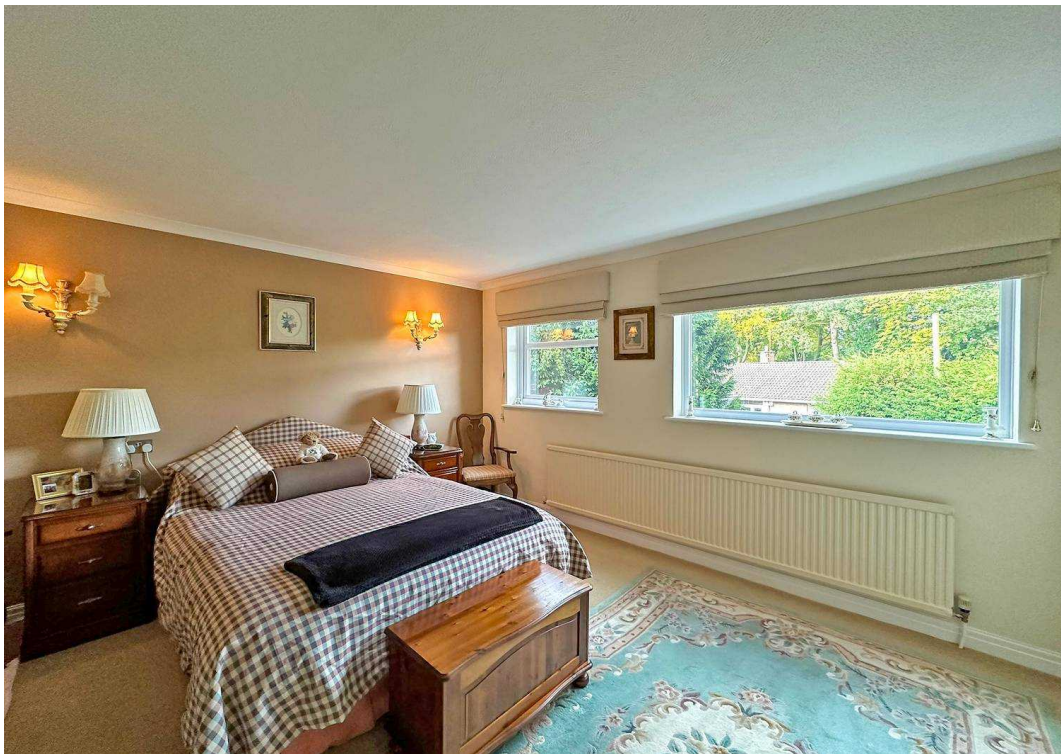
The apartment features two generously sized double bedrooms, one of which has a private balcony overlooking the rear. The superb breakfast kitchen is complemented by an expansive reception room, which easily accommodates both living and dining areas, enhanced by large rear-facing windows. The property also includes a well-appointed bathroom with an additional cloakroom WC. Off-road parking is allocated, and the apartment has access to an outdoor storage unit at the rear of the building.

According to the vendors, the property has a lease of 199 years starting from July 1, 2015, with no ground rent or service charge payable. Prospective buyers are advised to confirm the lease details with their solicitor.



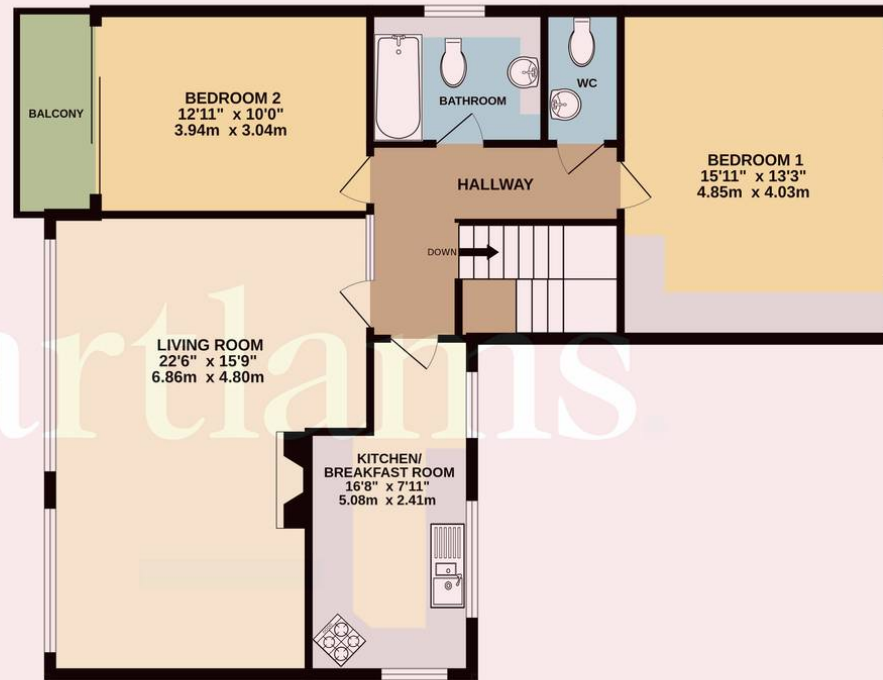
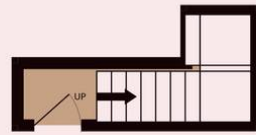
B.





GROUND FLOOR

1ST FLOOR



2 CROOME HOUSE

Whilst every attempt has been made to ensure the accuracy of the floorplan contained here, measurements of doors, windows, rooms and any other items are approximate and no responsibility is taken for any error, omission or mis-statement. This plan is for illustrative purposes only and should be used as such by any prospective purchaser. The services, systems and appliances shown have not been tested and no guarantee as to their operability or efficiency can be given.
Made with Metropix ©2024

Bartlams Tettenhall

Bartlams, 24 High Street - WV6 8QT

01902 759888

tettenhall@bartlams.co.uk

www.bartlams.co.uk/

NOTICE: These particulars, although believed to be correct, do not constitute any part of an offer or contract. All statements contained in these particulars as to this property are made without responsibility and are not to be relied upon as statements or representations of warranty whatsoever in relation to property. Any intending purchaser must satisfy themselves by inspection or otherwise as to the correctness each of the statements contained in these particulars. All measurements are approximate and for illustrative purposes only. Photographs are produced for general information and it must not be inferred that any item shown is included in the sale. DISCLOSURE: As a professional Estate Agency our clients employ us to look after their best interests. This includes providing them with full details of offers made to purchase their property. To ensure our obligations to our clients are met we need to check the status of all potential purchasers. If you make an offer on this property we will ask a member of The Finance Family to contact you to verify your status. They are a leading firm of Independent Financial Advisers and Mortgage Brokers. Should they transact any business resulting from our introduction then we may receive a commission.

