



Harman Court Rectory Park Avenue, Northolt

Guide Price £259,950

SAB
ESTATES



Harman Court

Rectory Park Avenue, Northolt

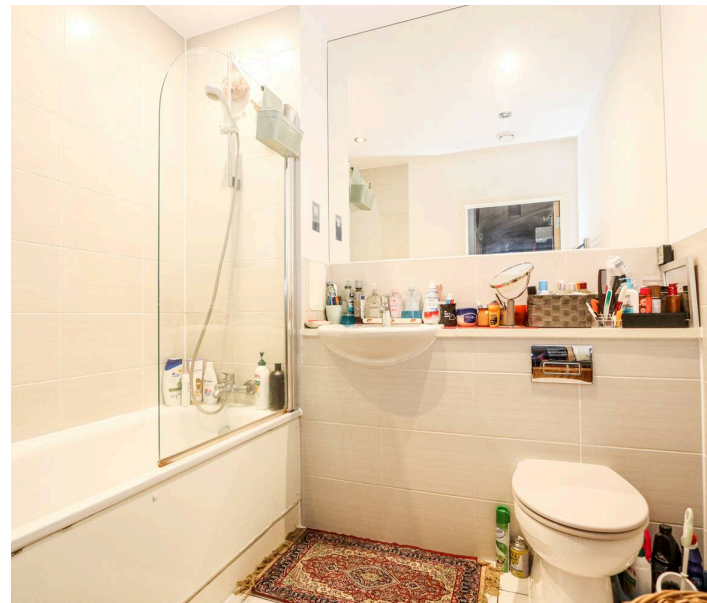
- 114 Years Remaining on Lease
- Ground Rent £250 pa / Service Charge £203 pcm
- Private balcony
- First Floor Apartment
- Prime Location
- Built in Storage
- Lift Available

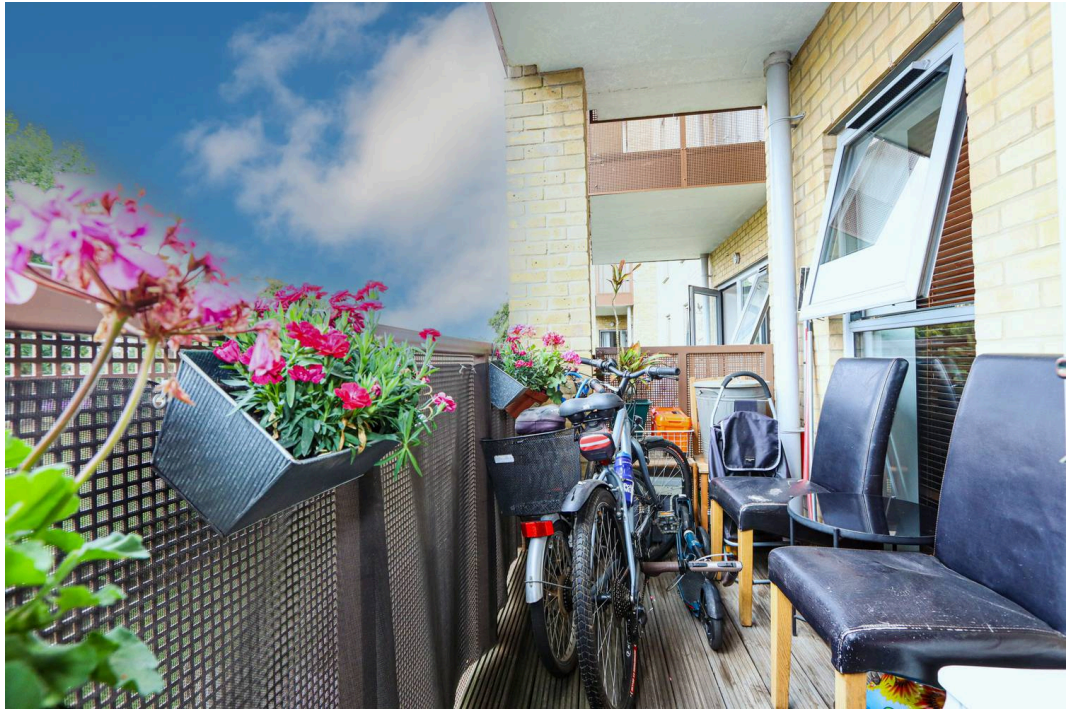
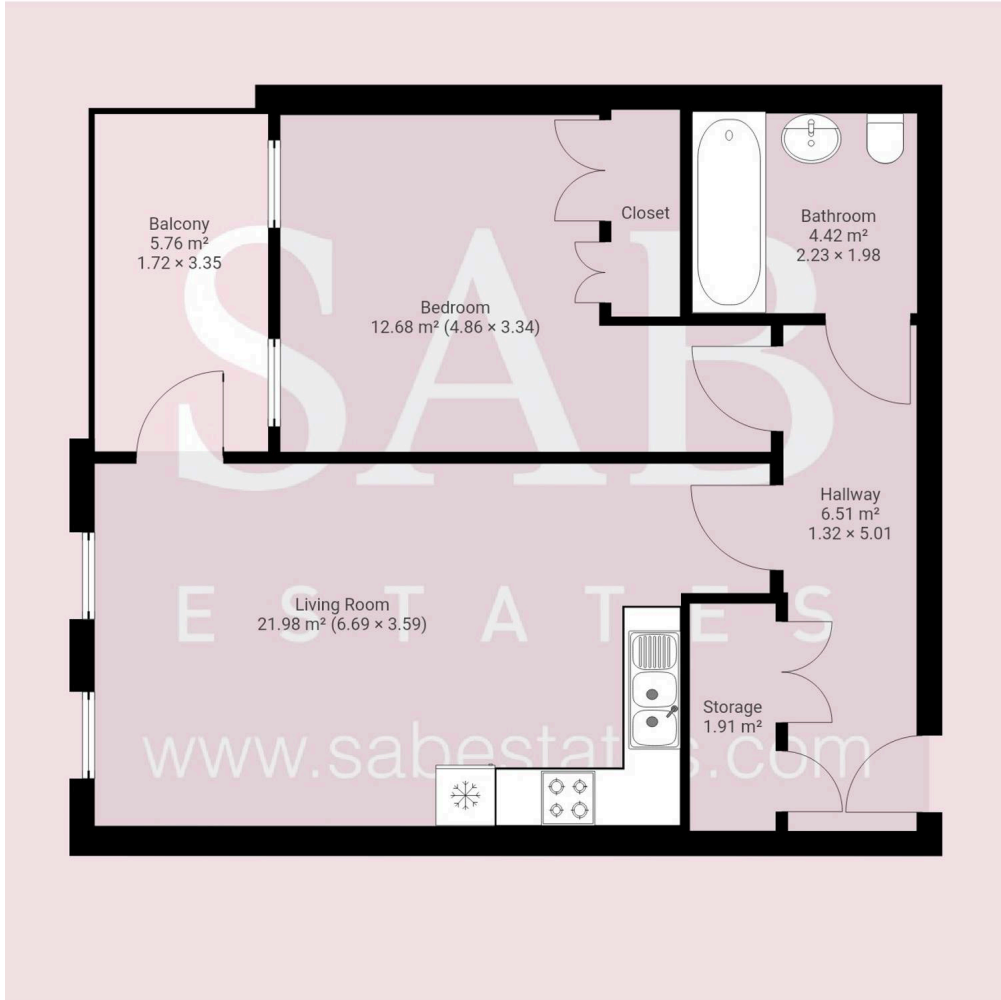
Council Tax band: C

Tenure: Leasehold

EPC Energy Efficiency Rating: B

EPC Environmental Impact Rating: B







SAB Estates

236-238 Ruislip Road, Greenford - UB6 9RS

020 8575 2929 • info@sabestates.com • www.sabestates.com/