



Tower House Daddyhole Plain, Torquay – TQ1 2EQ

Guide Price £795,000





Tower House Daddyhole Plain

Torquay, Torquay

Charming historic property, formerly a coastguard's cottage, converted into a spacious dwelling over 3 levels, boasting 5 bedrooms and stunning sea views. Includes lounge/dining room, fitted kitchen/breakfast room, driveway, detached garage, and landscaped rear garden with storage building.

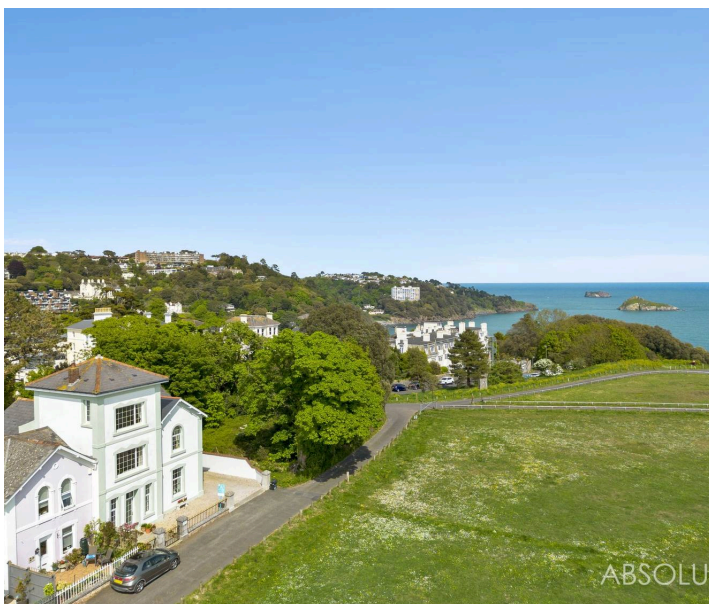
Council Tax band: G

Tenure: Freehold

EPC Energy Efficiency Rating: E

EPC Environmental Impact Rating:

- Affording uninterrupted sea views from the front elevation over Daddyhole Plain
- Former coastguard solid stone end of terrace house, of historic interest built in 1875
- Tandem length garage with electric up and over door, light and power
- Easy to maintain enclosed rear garden with a useful brick built store
- Spacious lounge/dining room
- Fitted kitchen/breakfast room
- Ground floor bedroom and shower room/WC and a spacious first floor family bathroom/WC
- Three further first floor bedrooms, principal bedroom having a dressing room and en suite bathroom/WC
- Fifth bedroom located in the original tower room



Tower House Daddyhole Plain

Torquay, Torquay

The property occupies a much sought after residential position and is approached via a private road adjacent to Daddyhole Plain that gives access to the original coastguard's cottages. There is easy access to Torquay harbour and sea front which are both within approximately 3/4 of a mile distant with its array of shops, facilities and amenities.

Wellswood village is within a miles distance with its selection of boutique shops, restaurants and cafes, post office, primary school and further facilities and amenities. This is a rare opportunity to acquire an impressive and spacious residence of historic interest, an early inspection is essential.

Absolute Sales & Lettings

Absolute Sales & Lettings Ltd, 13 Ilsham Road - TQ1 2JG

01803 214214

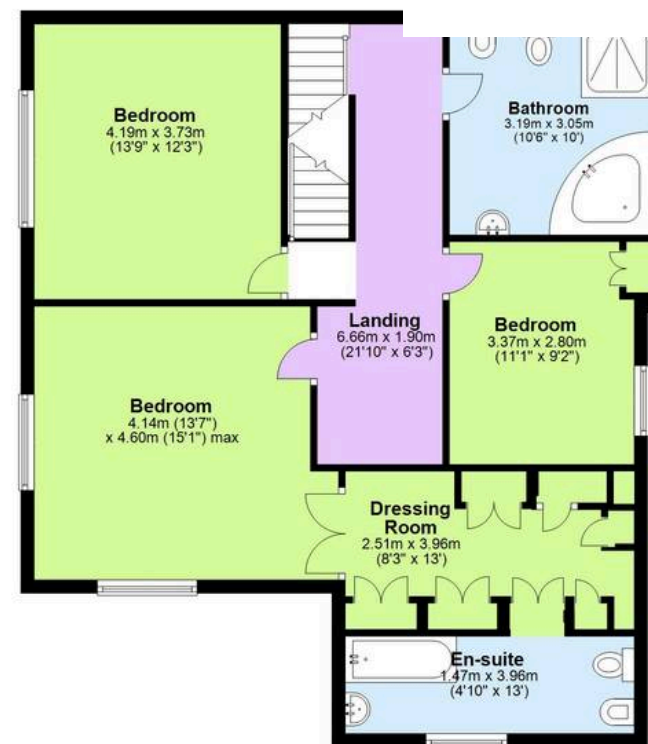
torquay@movewithabsolute.co.uk

movewithabsolute.co.uk/



First Floor

Approx. 86.4 sq. metres (930



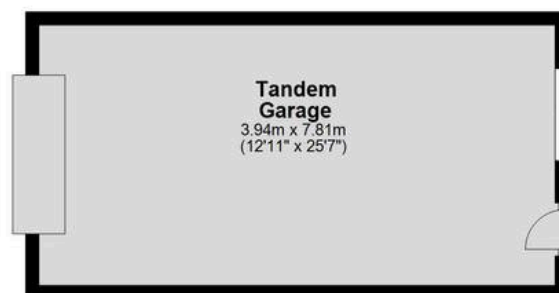
Second Floor

Approx. 16.5 sq. metres (178.1 sq. feet)



Ground Floor

Approx. 129.1 sq. metres (1390.0 sq. feet)



Total area: approx. 232.1 sq. metres (2498.5 sq. feet)

Approx.
Plan produced using PlanUp.

